

Madison, Wisconsin

CITY OF MADISON

CITY ENGINEERING DIVISION

DEPARTMENT OF PUBLIC WORKS

PLAN OF PROPOSED IMPROVEMENT

PUBLIC IMPROVEMENT PROJECT APPROVED

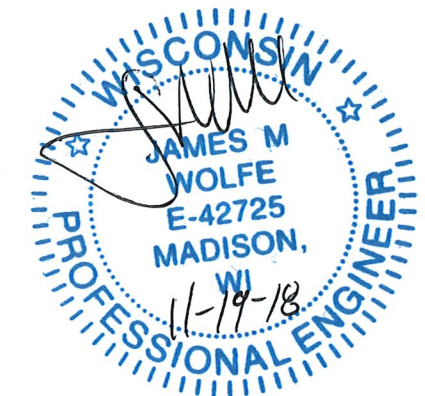
OCTOBER 3, 2017

BY THE COMMON COUNCIL
OF MADISON, WISCONSIN

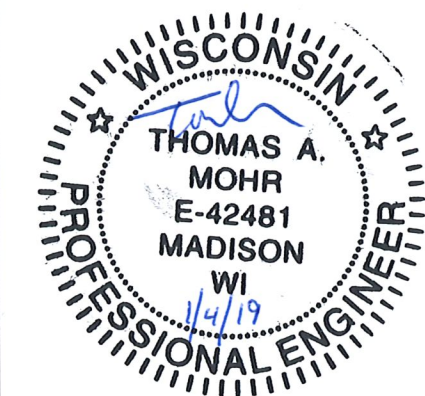
PUBLIC IMPROVEMENT DESIGN
APPROVED BY:

[Signature] 1/18/19
City Engineer Date

DESIGNED BY:



TRAFFIC CONTROL
DESIGNED BY:



INDEX OF SHEETS

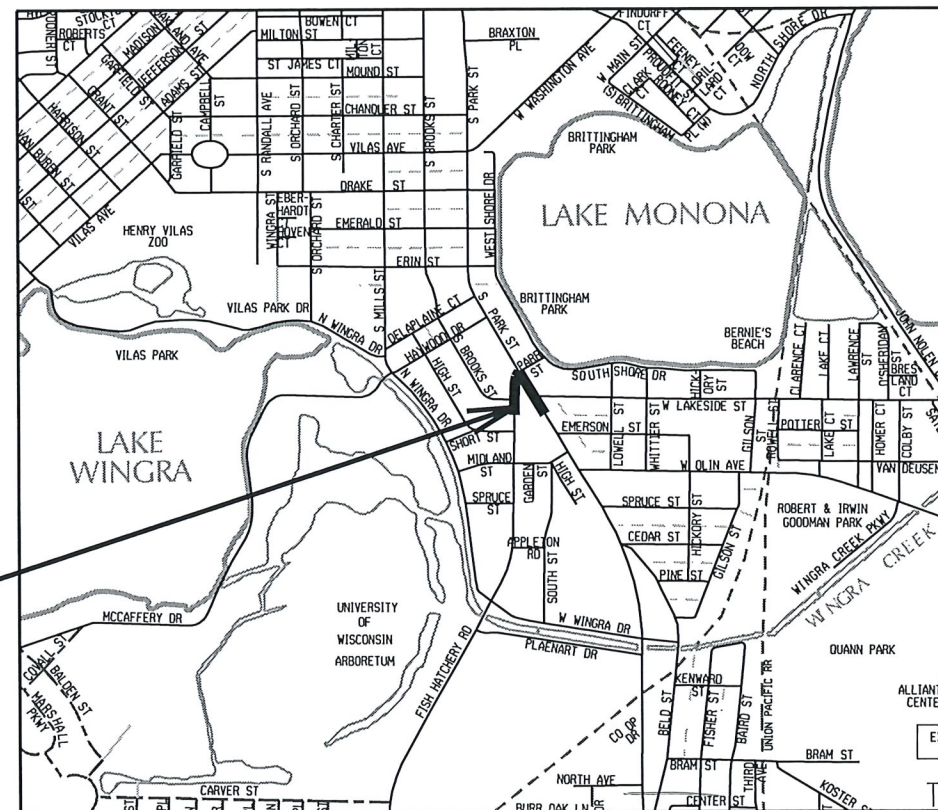
SHEET NO.	TITLE
1	TITLE
DI-D2	NOTES & DETAILS
P1	STREET PLAN
P2	GRADES PLAN
U1	UTILITIES PLAN
L1	LANDSCAPING PLAN
TC1-TC5	TRAFFIC CONTROL PLANS

1004-1032 S. PARK STREET

MUNIS NO. 10933
PROJECT NO. 53B2438

CONTRACT NO. 2438

CONVENTIONAL SIGNS	
FIELD VERIFY ALL UTILITY LOCATIONS	
GAS	— G —
STORM SEWER	— ST —
SANITARY SEWER	— SAN —
WATER	— W —
OVERHEAD ELECTRIC	— OH —
UNDERGROUND ELEC	— E —
UNDERGROUND TEL	— T —
UNDERGROUND FIBER	— FD —
POWER POLE	



PROJECT
LOCATION



RE-ISSUANCE OF PLANS
REVISIONS ON ALL SHEETS

PLOT SCALE: _____

PLOT NAME: _____

REV. DATE: _____

ORIGINATOR: CITY OF MADISON, STREETS DIVISION

DETAIL

STANDARD NOTES
AND COMMENTS

CITY OF MADISON

REV 10-1-18 JMW

ANY PAVEMENT MARKINGS THAT ARE REMOVED OR DAMAGED SHALL BE REPLACED BY THE DEVELOPER/CONTRACTOR AS DIRECTED BY CITY TRAFFIC ENGINEERING.

THE LOCATION AND INFORMATION FOR PROPOSED NEW TREES, IN THE PUBLIC RIGHT OF WAY OR ON PUBLIC LANDS ARE APPROXIMATE AND ARE SHOWN FOR REFERENCE ONLY.

CONTRACTOR SHALL CONTACT BRAD HOFMANN WITH CITY FORESTRY (266-4908 OR 220-6796) AT LEAST ONE WEEK PRIOR TO PLANTING TO ALLOW FORESTRY TO MARK THE PLANTING SITES AND REVIEW PLANTING SPECIFICATIONS WITH THE LANDSCAPING CONTRACTOR. TREE PLANTING WITHIN THE PUBLIC RIGHT OF WAY OR ON PUBLIC LANDS SHALL BE APPROVED BY THE CITY FORESTER PRIOR TO INSTALLATION. COORDINATE WITH CITY FORESTRY PRIOR TO INSTALLATION OF TREE GRATES AND CONFIRM PLANTABILITY OF SITES PRIOR TO INSTALLATION.

NO TREES IN THE RIGHT OF WAY OR ON PUBLIC LANDS SHALL BE TRIMMED, PRUNED, REMOVED OR ADVERSELY AFFECTED IN ANY WAY UNTIL THE DEVELOPER HAS RECEIVED WRITTEN PERMISSION FROM THE CITY ENGINEER OR CITY FORESTER. SAID WRITTEN PERMISSION SHALL INCLUDE LANGUAGE INDICATING THAT SECTION 10.101 OF THE MADISON GENERAL ORDINANCES AND ADMINISTRATIVE PROCEDURE MEMORANDUM NO. 6-2, REFERING TO NOTIFICATION OF PROPERTY OCCUPANTS AND/OR OWNERS, HAS BEEN COMPLIED WITH.

IT IS THE RESPONSIBILITY OF THE DEVELOPER/CONTRACTOR TO COORDINATE ANY RELOCATION OR UNDERGROUNDING OF PRIVATE UTILITIES WITH THOSE UTILITY COMPANIES. THIS INCLUDES ANY NECESSARY UTILITY POLE RELOCATIONS INDICATED ON THE CITY-ISSUED RIGHT-OF-WAY PLANS.

ALL PAVEMENT WITHIN THE FISH HATCHERY RD. RIGHT-OF-WAY SHALL BE TYPE C PAVEMENT. ALL PAVEMENT WITHIN THE S. PARK ST. RIGHT-OF-WAY SHALL BE 9" CONCRETE PAVEMENT. SEE DETAILS.

ALL GUTTERS SHALL DRAIN WITH A MINIMUM GRADES OF 0.5% TOWARD STORM SEWER INLETS.

THE CROSS SLOPE OF SIDEWALKS AND BARRIER FREE SIDEWALK CURB RAMPS SHALL BE 1.5%. THE LONGITUDINAL GRADE OF BARRIER FREE SIDEWALK CURB RAMPS SHALL NOT EXCEED 8.33%. ALL SIDEWALK RAMPS SHALL BE CONSTRUCTED ACCORDING TO S.D.D. 3.03. AT ALL OTHER LOCATIONS THE LONGITUDINAL GRADE OF SIDEWALKS SHALL NOT EXCEED 5.0 % OR THE ADJACENT STREET GRADE WHICHEVER IS GREATER NOR BE LESS THAN 0.4% AND SHALL DRAIN TOWARD STORM SEWER INLETS. SIDE SLOPES WITHIN TEN FEET OF A PUBLIC SIDEWALK SHALL NOT EXCEED 4:00:1. ALL SIDEWALK AND SIDEWALK RAMP ELEVATIONS AND GRADES SHALL BE FIELD VERIFIED AND SET TO COMPLY WITH THE CITY OF MADISON STANDARD SPECIFICATIONS AND THE A.D.A. GUIDELINES.

OBTAIN A PRINT OUT OF THE ALIGNMENT FROM THE CITY ENGINEER PRIOR TO STAKING THIS PROJECT.

CURB STATION AND OFFSETS SHALL BE TO THE FACE OF CURB UNLESS OTHERWISE INDICATED. CURB ELEVATIONS SHALL BE TO THE TOP OF CURB (OR EXTENDED TOP OF CURB FOR DRIVEWAYS OR RAMPS) UNLESS OTHERWISE INDICATED.

POWER POLES AND OTHER OBSTRUCTIONS SHALL BE MOVED TO PROVIDE 2 FEET MINIMUM OF CLEAR DISTANCE FROM ANY FACE OF CURB OR EDGE OF SIDEWALK.

ANY INFORMATION SHOWN ON THIS PLAN, WHICH IS NOT PART OF THIS RIGHT-OF-WAY PROJECT, IS PRELIMINARY AND NOT FOR CONSTRUCTION.

THERE MAY BE EXISTING UTILITIES OR OTHER FEATURES WHICH ARE EITHER NOT SHOWN OR SHOWN INCORRECTLY ON THIS PLAN. IT IS THE RESPONSIBILITY OF THE DEVELOPER TO LOCATE AND IDENTIFY ALL UTILITIES AND TOPOGRAPHY WHICH MAY AFFECT THE CONSTRUCTION OF THESE IMPROVEMENTS.

THE DEVELOPER SHALL PROVIDE, INSTALL AND MAINTAIN ALL STREET END BARRICADES, SIGNING AND TRAFFIC CONTROL, AS REQUIRED BY THE CITY TRAFFIC ENGINEER.

PAVEMENT SAWCUTS SHALL BE AS DIRECTED BY THE CITY CONSTRUCTION ENGINEER. SAWCUTS SHOWN ON THE PLAN ARE APPROXIMATE.

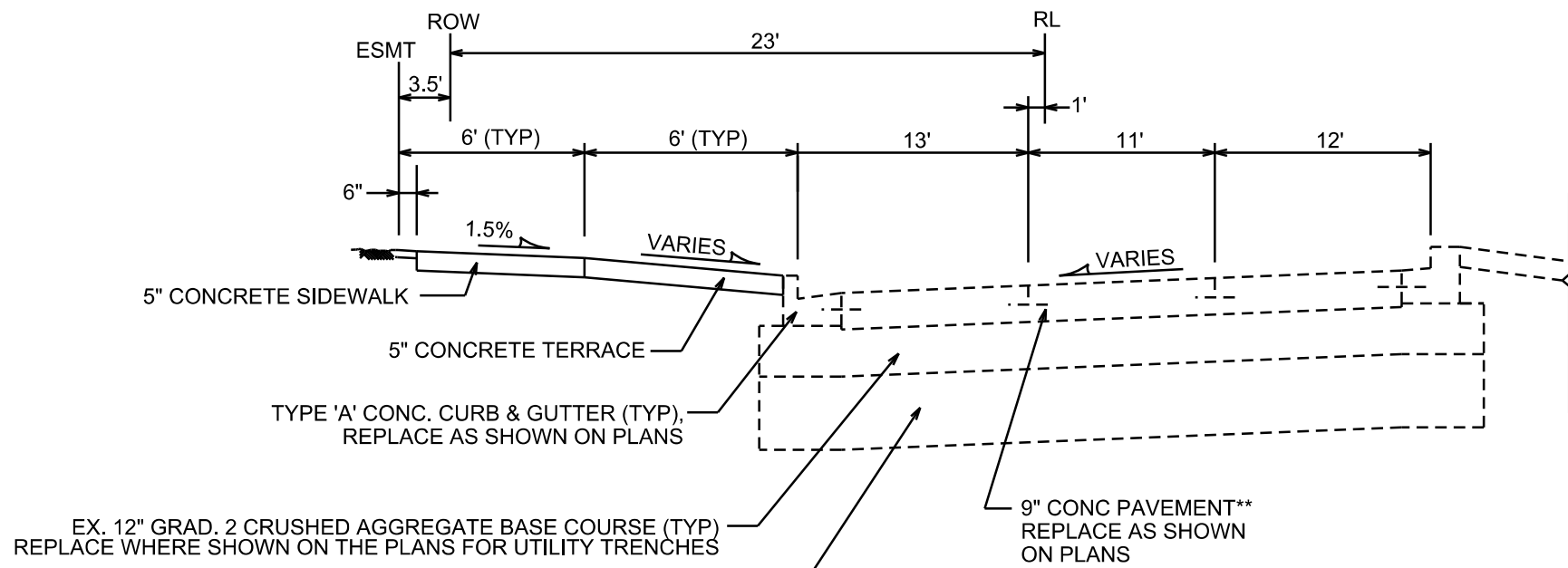
DAMAGE TO ANY EXISTING CURB, PAVEMENT, SIDEWALK, ETC. THAT IS TO REMAIN SHALL BE REPAIRED BY THE DEVELOPER/CONTRACTOR AS DIRECTED BY THE ENGINEER.

PLOT SCALE: _____

PLOT NAME: _____

REV. DATE: _____

ORIGINATOR: CITY OF MADISON, STREETS DIVISION



EX. 12" GRAD. 2 CRUSHED AGGREGATE BASE COURSE (TYP)
REPLACE WHERE SHOWN ON THE PLANS FOR UTILITY TRENCHES

EX. 20" BREAKER RUN, INSTALL FABRIC (TYPE SAS) AS NEEDED
REPLACE WHERE SHOWN ON PLANS FOR UTILITY TRENCH PATCHES

TYPICAL SECTION

S. PARK STREET
NOT TO SCALE

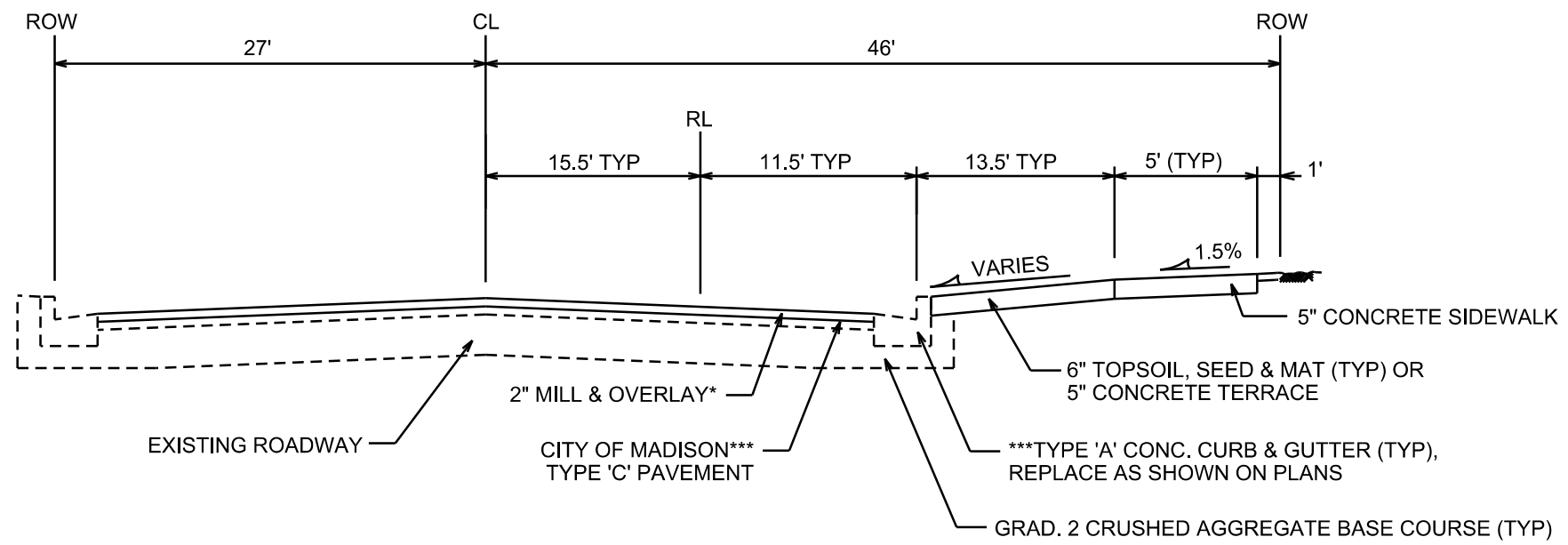
NOTES:

* MILL & OVERLAY LIMITS ARE APPROXIMATE. PATCH PAVEMENT PER CITY'S PATCHING CRITERIA. FINAL MILL & OVERLAY LIMITS TO BE DETERMINED BY THE CONSTRUCTION ENGINEER. TYPE III TRENCH PATCHES REQUIRED FOR ALL UTILITY TRENCHES, INCLUDING REPLACEMENT OF BASE AS SHOWN ON DETAIL.

PAVEMENT RATINGS: FISH HATCHERY RD. = 5 (ARTERIAL)

** CONSTRUCT CONCRETE PAVEMENT PER CITY STANDARD DETAIL DRAWINGS 3.10 & 3.11, WHICH INCLUDES TYING REPLACED OR NEW CURB TO EXISTING CONCRETE PAVEMENT. MATCH EXISTING JOINTS.

*** REMOVE & REPLACE CURB & GUTTER ON FISH HATCHERY RD. AS NECESSARY FOR INSTALLATION OF UTILITIES OR AS DIRECTED BY THE ENGINEER. REPLACEMENT OF CURB WILL REQUIRE A SAWCUT & PAVEMENT REPLACEMENT 2 FT. FROM EDGE OF GUTTER. MATCH EXISTING PAVEMENT, INCLUDING BASE ON FISH HATCHERY RD. OR CITY STANDARD TYPE 'C' PAVEMENT, WHICHEVER PROVIDES A BETTER STRUCTURE; SAME APPLIES TO UTILITY TRENCH PATCHES. SEE S.D.D. 4.01



TYPICAL SECTION

FISH HATCHERY ROAD
NOT TO SCALE

PLOT SCALE: _____

PLOT NAME: _____

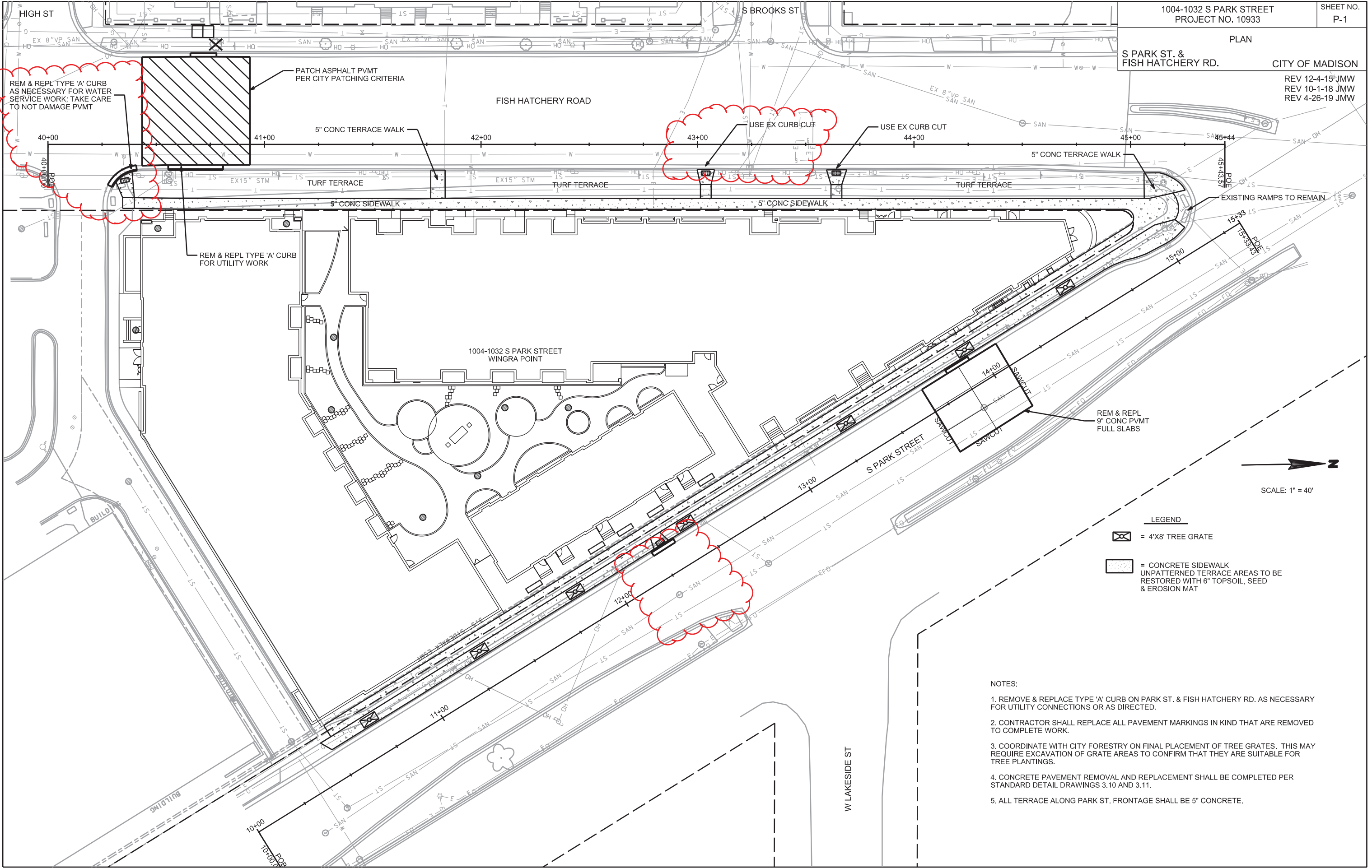
REV. DATE: _____

ORIGINATOR: CITY OF MADISON, STREETS DIVISION

PLAN

S PARK ST. &
FISH HATCHERY RD. CITY OF MADISON

REV 12-4-15 JMW
REV 10-1-18 JMW
REV 4-26-19 JMW



REM & REPL TYPE 'A' CURB AS NECESSARY FOR WATER SERVICE WORK; TAKE CARE TO NOT DAMAGE PVMT

PATCH ASPHALT PVMT PER CITY PATCHING CRITERIA

FISH HATCHERY ROAD

5" CONC TERRACE WALK

USE EX CURB CUT

USE EX CURB CUT

5" CONC TERRACE WALK

TURF TERRACE

TURF TERRACE

TURF TERRACE

5" CONC SIDEWALK

5" CONC SIDEWALK

EXISTING RAMPS TO REMAIN

REM & REPL TYPE 'A' CURB FOR UTILITY WORK

1004-1032 S PARK STREET WINGRA POINT

S PARK STREET

REM & REPL 9" CONC PVMT FULL SLABS



SCALE: 1" = 40'

LEGEND

[Symbol] = 4'X8' TREE GRATE

[Symbol] = CONCRETE SIDEWALK UNPATTERNED TERRACE AREAS TO BE RESTORED WITH 6" TOPSOIL, SEED & EROSION MAT

NOTES:

1. REMOVE & REPLACE TYPE 'A' CURB ON PARK ST. & FISH HATCHERY RD. AS NECESSARY FOR UTILITY CONNECTIONS OR AS DIRECTED.
2. CONTRACTOR SHALL REPLACE ALL PAVEMENT MARKINGS IN KIND THAT ARE REMOVED TO COMPLETE WORK.
3. COORDINATE WITH CITY FORESTRY ON FINAL PLACEMENT OF TREE GRATES. THIS MAY REQUIRE EXCAVATION OF GRATE AREAS TO CONFIRM THAT THEY ARE SUITABLE FOR TREE PLANTINGS.
4. CONCRETE PAVEMENT REMOVAL AND REPLACEMENT SHALL BE COMPLETED PER STANDARD DETAIL DRAWINGS 3.10 AND 3.11.
5. ALL TERRACE ALONG PARK ST. FRONTAGE SHALL BE 5" CONCRETE.

PLOT SCALE:

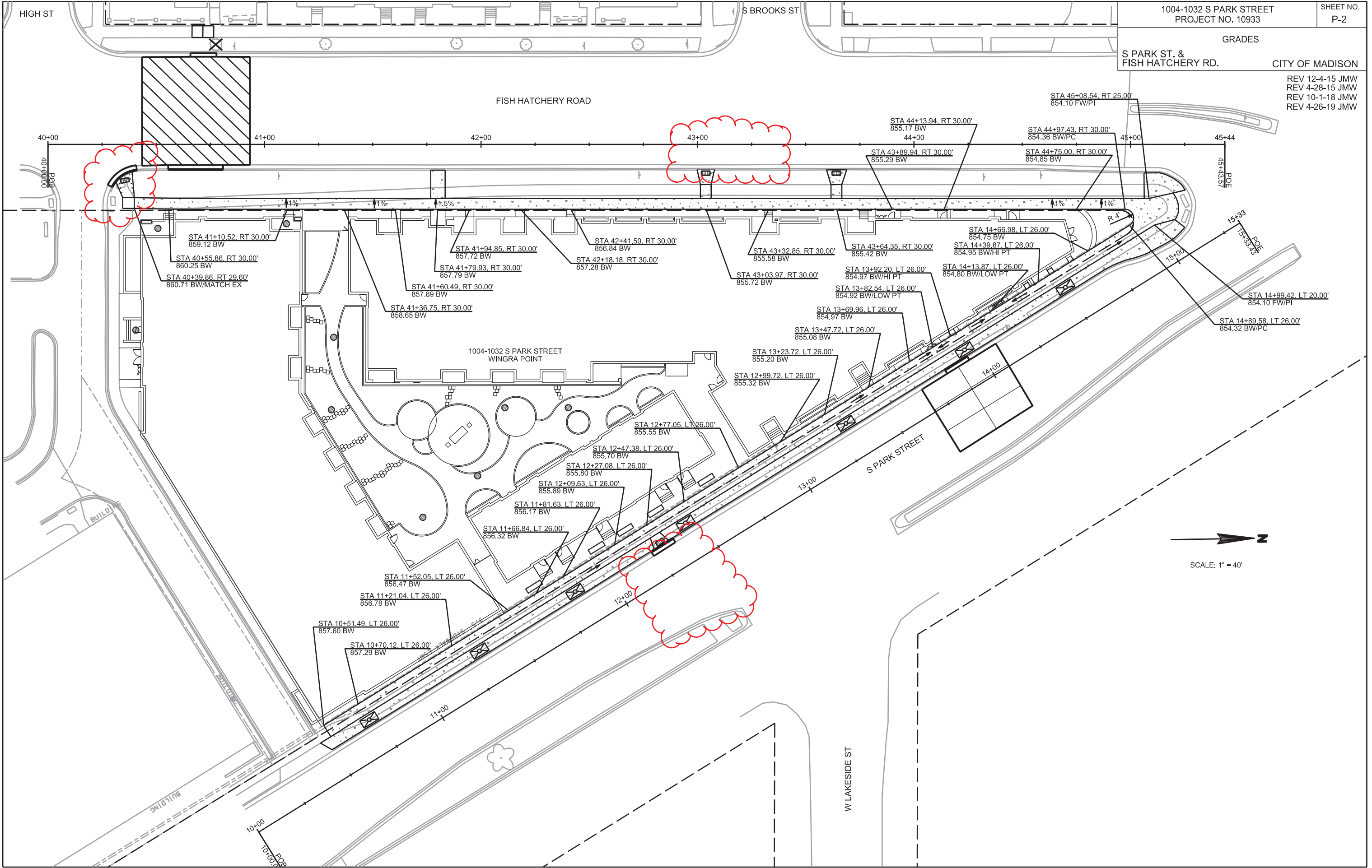
PLOT NAME:

REV. DATE:

ORIGINATOR: CITY OF MADISON, STREETS DIVISION

GRADES
 S PARK ST. & FISH HATCHERY RD. CITY OF MADISON
 REV 12-4-15 JMW
 REV 4-28-15 JMW
 REV 10-1-18 JMW
 REV 4-26-19 JMW

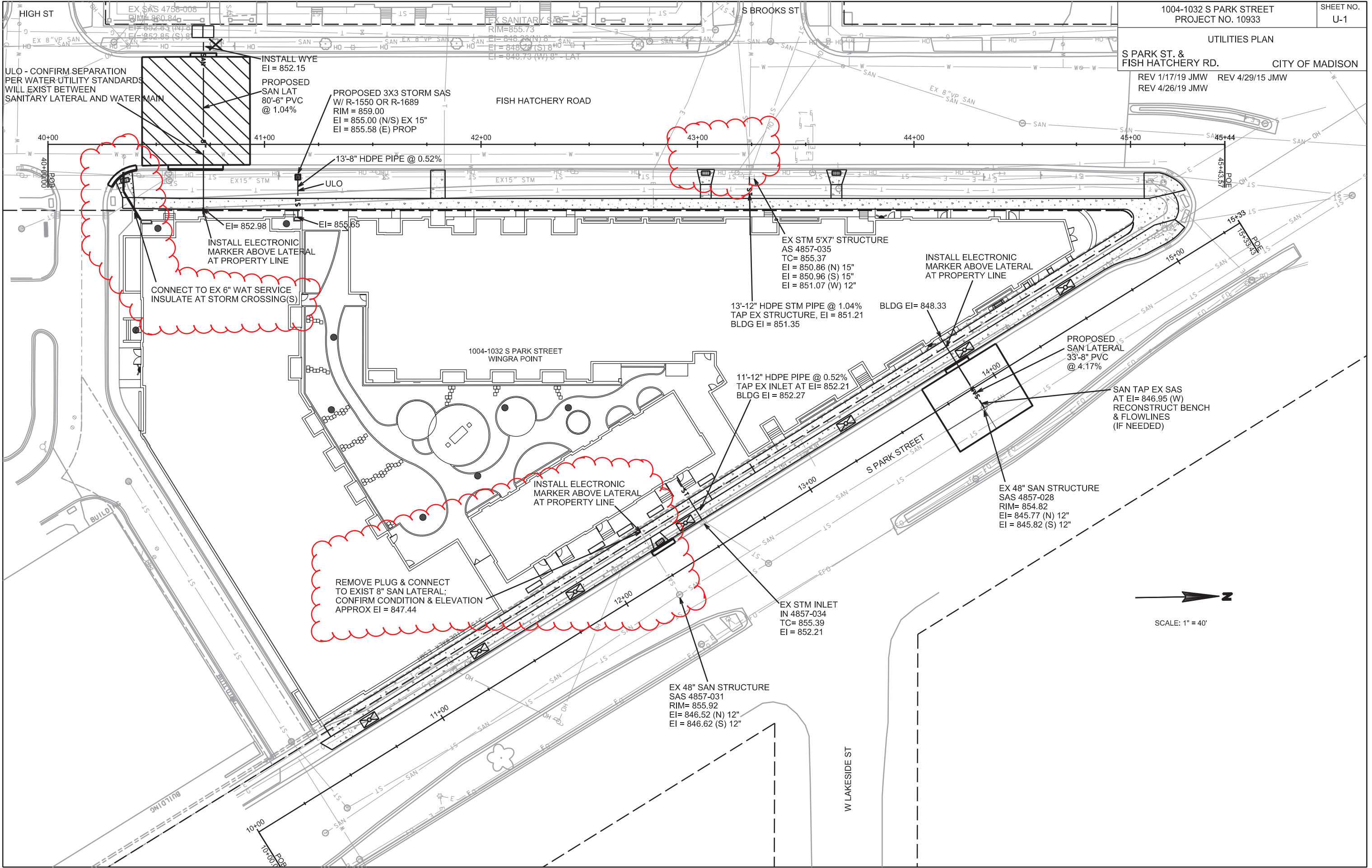
PLOT SCALE: _____
 PLOT NAME: _____
 REV. DATE: _____
 ORIGINATOR: CITY OF MADISON, STREETS DIVISION



UTILITIES PLAN

S PARK ST. & FISH HATCHERY RD. CITY OF MADISON

REV 1/17/19 JMW REV 4/29/15 JMW
REV 4/26/19 JMW

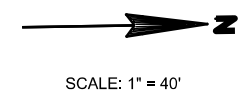
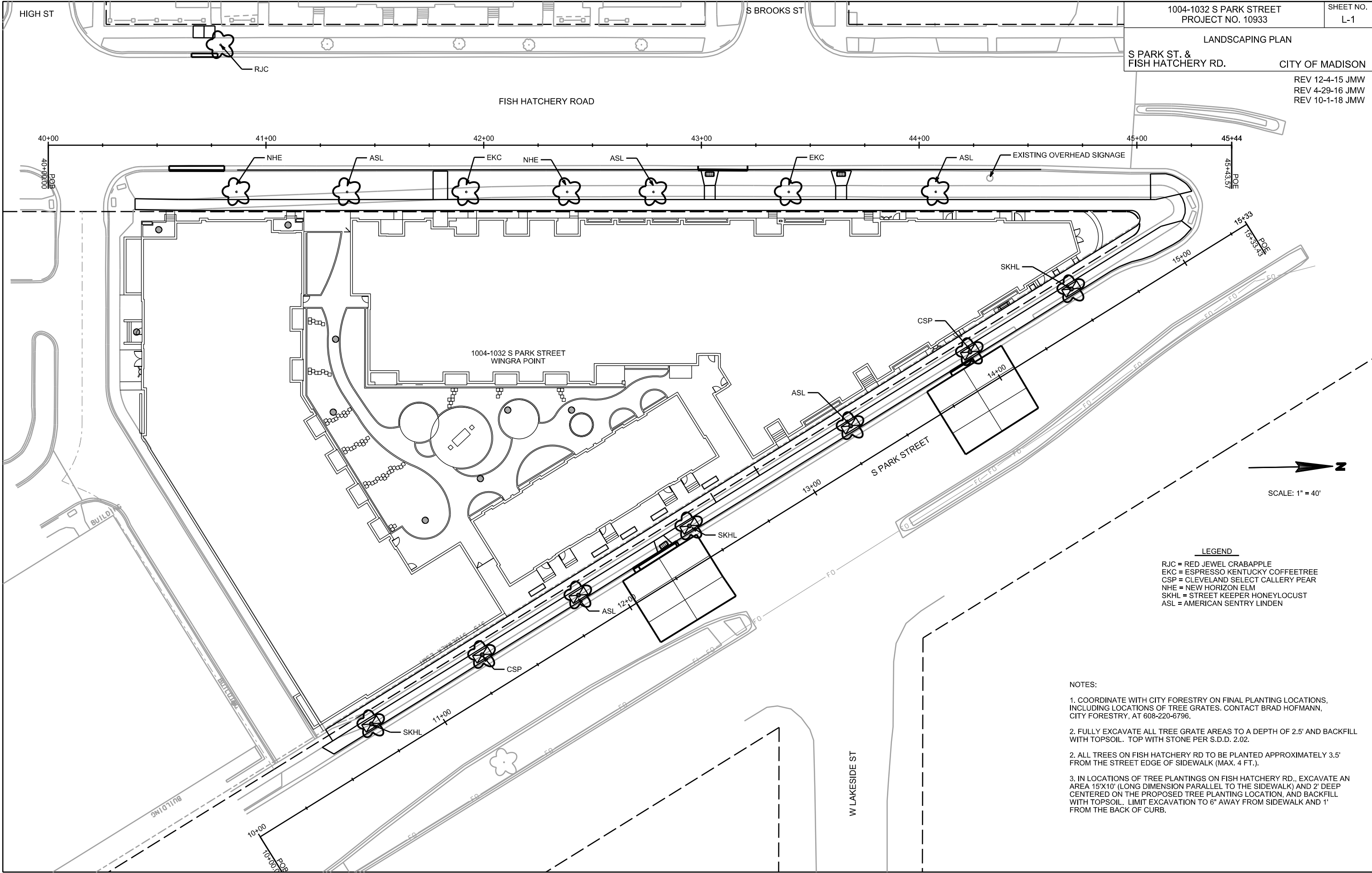


PLOT SCALE:

PLOT NAME:

REV. DATE:

ORIGINATOR: CITY OF MADISON, STREETS DIVISION



- LEGEND**
- RJC = RED JEWEL CRABAPPLE
 - EKC = ESPRESSO KENTUCKY COFFEETREE
 - CSP = CLEVELAND SELECT CALLERY PEAR
 - NHE = NEW HORIZON ELM
 - SKHL = STREET KEEPER HONEYLOCUST
 - ASL = AMERICAN SENTRY LINDEN

- NOTES:**
1. COORDINATE WITH CITY FORESTRY ON FINAL PLANTING LOCATIONS, INCLUDING LOCATIONS OF TREE GRATES. CONTACT BRAD HOFMANN, CITY FORESTRY, AT 608-220-6796.
 2. FULLY EXCAVATE ALL TREE GRATE AREAS TO A DEPTH OF 2.5' AND BACKFILL WITH TOPSOIL. TOP WITH STONE PER S.D.D. 2.02.
 2. ALL TREES ON FISH HATCHERY RD TO BE PLANTED APPROXIMATELY 3.5' FROM THE STREET EDGE OF SIDEWALK (MAX. 4 FT.).
 3. IN LOCATIONS OF TREE PLANTINGS ON FISH HATCHERY RD., EXCAVATE AN AREA 15'X10' (LONG DIMENSION PARALLEL TO THE SIDEWALK) AND 2' DEEP CENTERED ON THE PROPOSED TREE PLANTING LOCATION, AND BACKFILL WITH TOPSOIL. LIMIT EXCAVATION TO 6" AWAY FROM SIDEWALK AND 1' FROM THE BACK OF CURB.

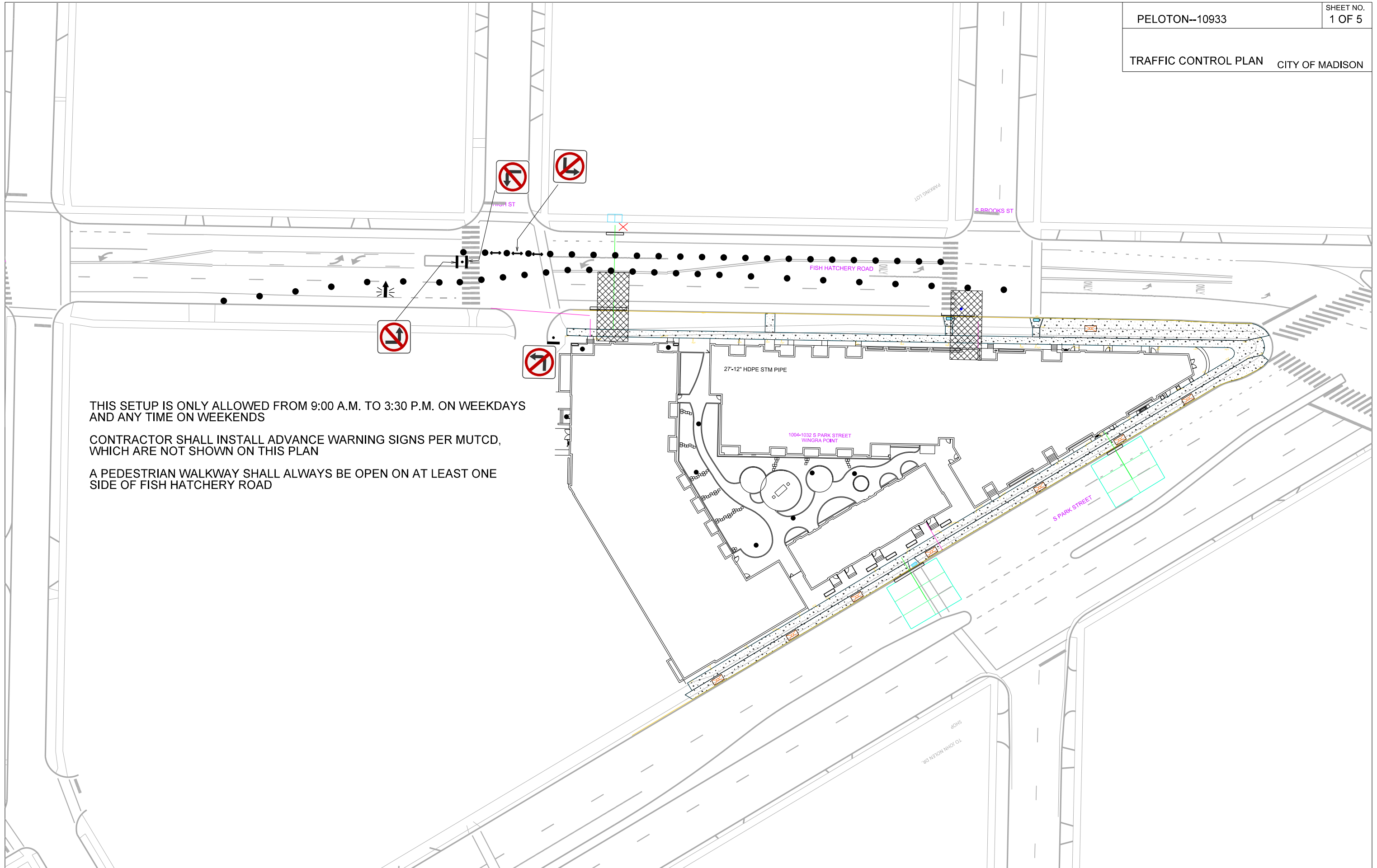
PLOT SCALE: _____
 PLOT NAME: _____
 REV. DATE: _____
 ORIGINATOR: CITY OF MADISON, STREETS DIVISION

PLOT SCALE:

PLOT NAME:

REV. DATE:

ORIGINATOR: CITY OF MADISON, TRAFFIC ENG. DIV.



THIS SETUP IS ONLY ALLOWED FROM 9:00 A.M. TO 3:30 P.M. ON WEEKDAYS
AND ANY TIME ON WEEKENDS

CONTRACTOR SHALL INSTALL ADVANCE WARNING SIGNS PER MUTCD,
WHICH ARE NOT SHOWN ON THIS PLAN

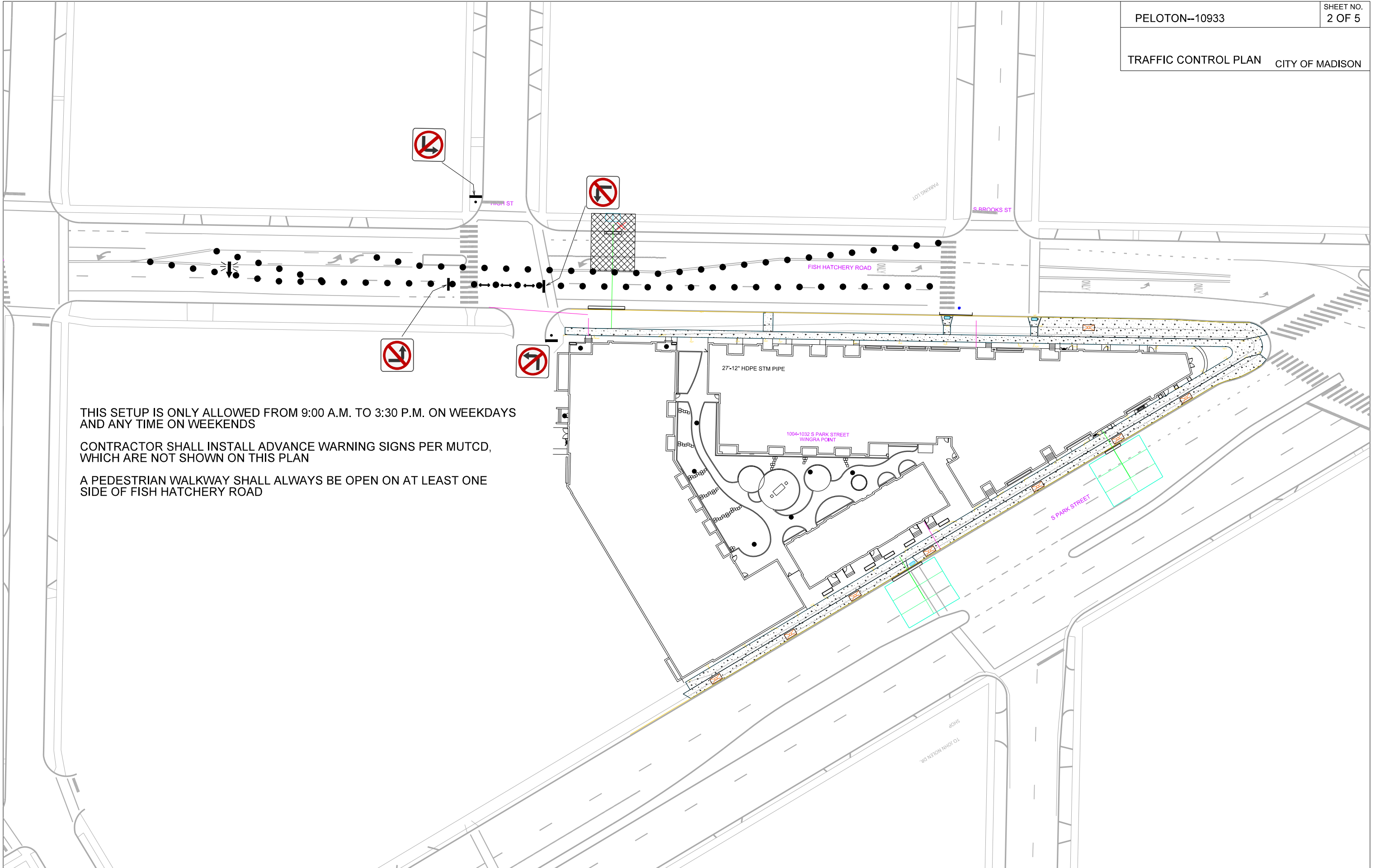
A PEDESTRIAN WALKWAY SHALL ALWAYS BE OPEN ON AT LEAST ONE
SIDE OF FISH HATCHERY ROAD

PLOT SCALE:

PLOT NAME:

REV. DATE:

ORIGINATOR: CITY OF MADISON, TRAFFIC ENG. DIV.



THIS SETUP IS ONLY ALLOWED FROM 9:00 A.M. TO 3:30 P.M. ON WEEKDAYS
AND ANY TIME ON WEEKENDS

CONTRACTOR SHALL INSTALL ADVANCE WARNING SIGNS PER MUTCD,
WHICH ARE NOT SHOWN ON THIS PLAN

A PEDESTRIAN WALKWAY SHALL ALWAYS BE OPEN ON AT LEAST ONE
SIDE OF FISH HATCHERY ROAD

THIS SETUP IS ONLY ALLOWED FROM 7:00 A.M. TO 3:00 P.M. ON WEEKDAYS AND ANY TIME ON WEEKENDS WITH CITY TE APPROVAL. IN ADDITION, THIS SETUP WILL NOT BE PERMITTED ON WEEKENDS WITH UW HOME FOOTBALL GAMES, MENS HOCKEY GAMES OR MENS BASKETBALL GAMES

FOR CONCRETE SLAB PAVING, POUR CONCRETE ON SATURDAY MORNING TO OPEN BY 3:00 P.M. ON THE FOLLOWING MONDAY

CONTRACTOR SHALL INSTALL ADVANCE WARNING SIGNS PER MUTCD, WHICH ARE NOT SHOWN ON THIS PLAN

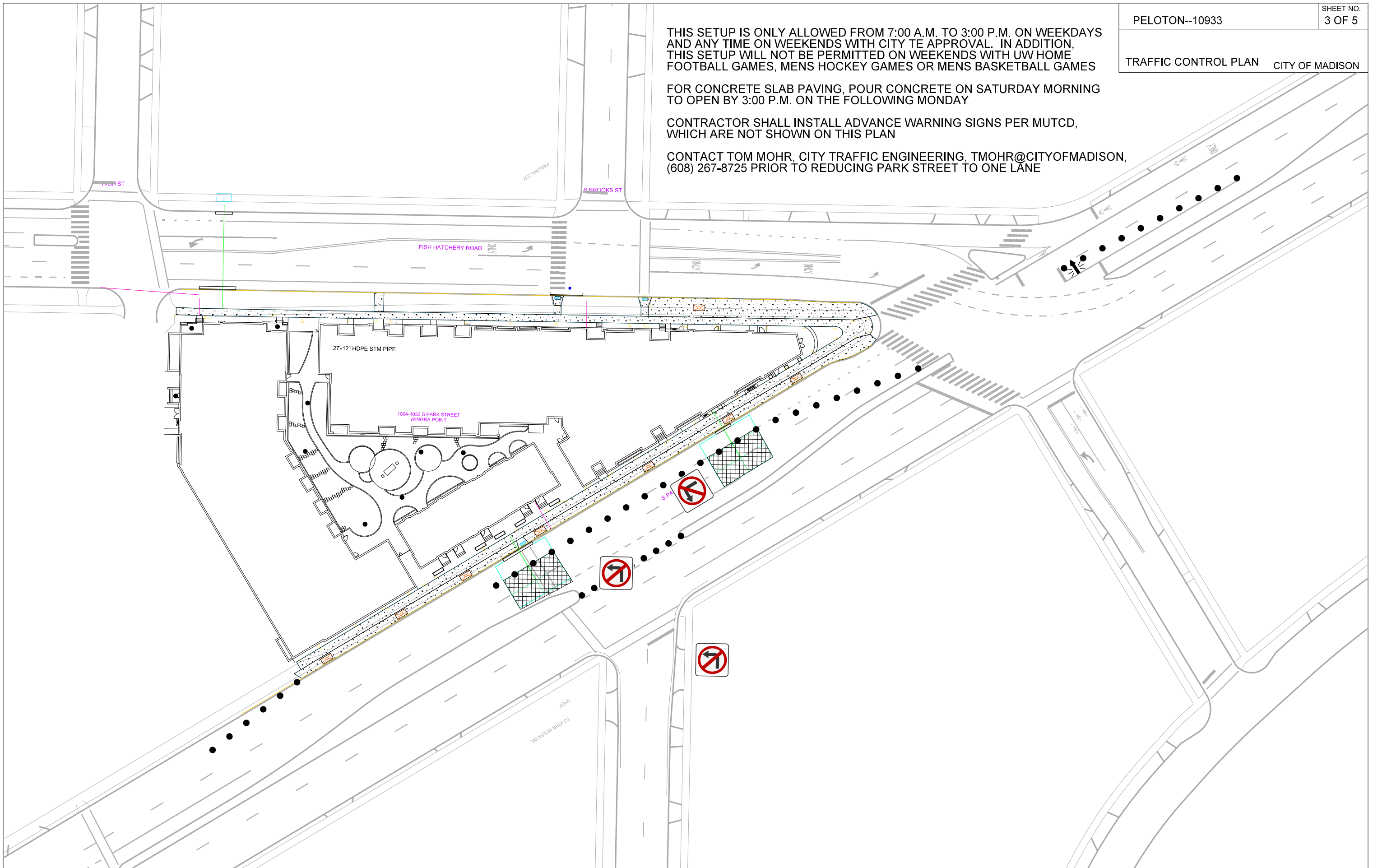
CONTACT TOM MOHR, CITY TRAFFIC ENGINEERING, TMOHR@CITYOFMADISON, (608) 267-8725 PRIOR TO REDUCING PARK STREET TO ONE LANE

PLOT SCALE:

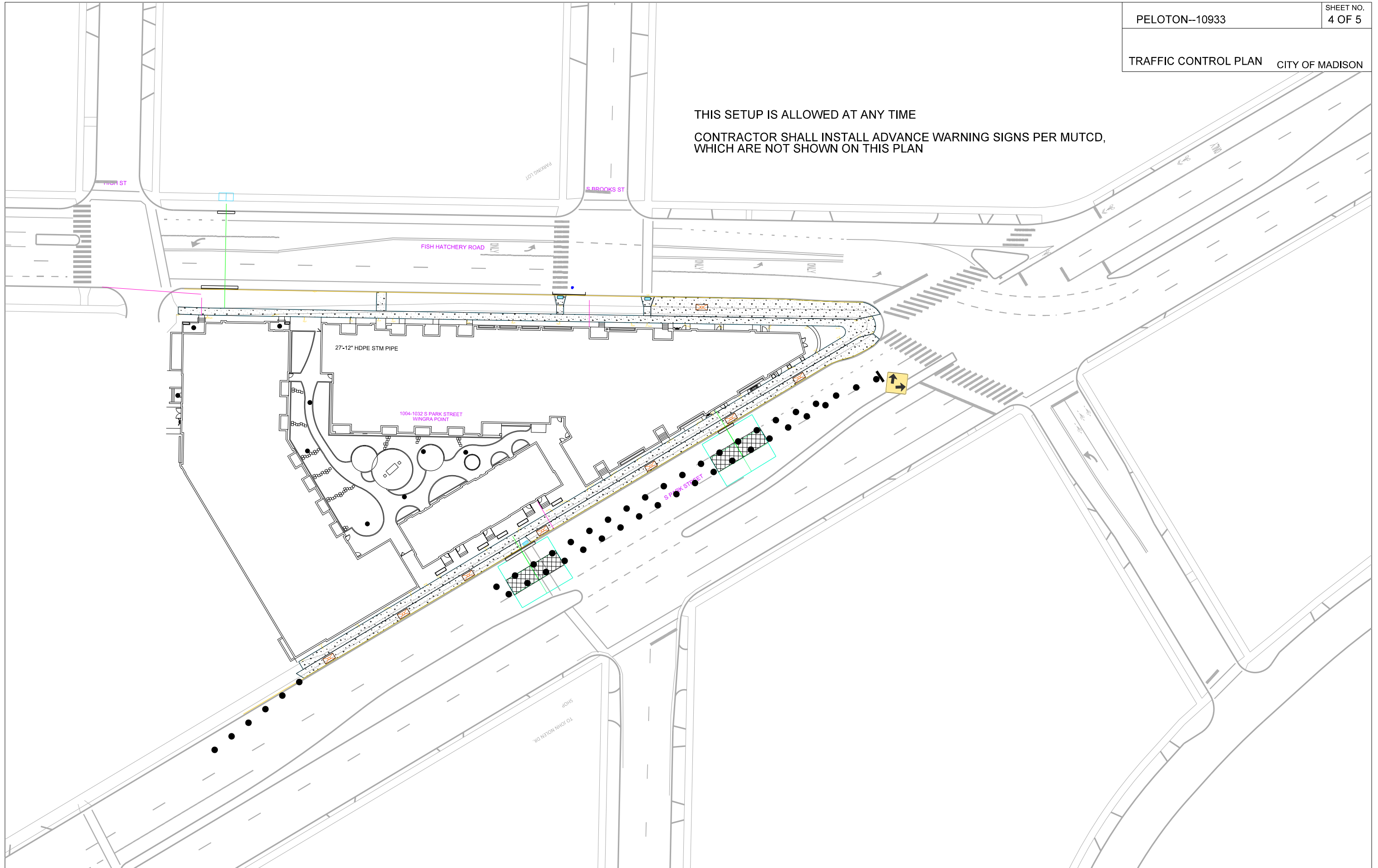
PLOT NAME:

REV. DATE:

ORIGINATOR: CITY OF MADISON, TRAFFIC ENG. DIV.



THIS SETUP IS ALLOWED AT ANY TIME
CONTRACTOR SHALL INSTALL ADVANCE WARNING SIGNS PER MUTCD,
WHICH ARE NOT SHOWN ON THIS PLAN



PLOT SCALE:

PLOT NAME:

REV. DATE:

ORIGINATOR: CITY OF MADISON, TRAFFIC ENG. DIV.

THIS SETUP IS ONLY ALLOWED FROM 7:00 A.M. TO 3:00 P.M. ON WEEKDAYS AND ANY TIME ON WEEKENDS WITH CITY TE APPROVAL. IN ADDITION, THIS SETUP WILL NOT BE PERMITTED ON WEEKENDS WITH UW HOME FOOTBALL GAMES, MENS HOCKEY GAMES OR MENS BASKETBALL GAMES

FOR CONCRETE SLAB PAVING, POUR CONCRETE ON SATURDAY MORNING TO OPEN BY 3:00 P.M. ON THE FOLLOWING MONDAY

CONTRACTOR SHALL INSTALL ADVANCE WARNING SIGNS PER MUTCD, WHICH ARE NOT SHOWN ON THIS PLAN

CONTACT TOM MOHR, CITY TRAFFIC ENGINEERING, TMOHR@CITYOFMADISON, (608) 267-8725 PRIOR TO REDUCING PARK STREET TO ONE LANE

PLOT SCALE:

PLOT NAME:

REV. DATE:

ORIGINATOR: CITY OF MADISON, TRAFFIC ENG. DIV.

