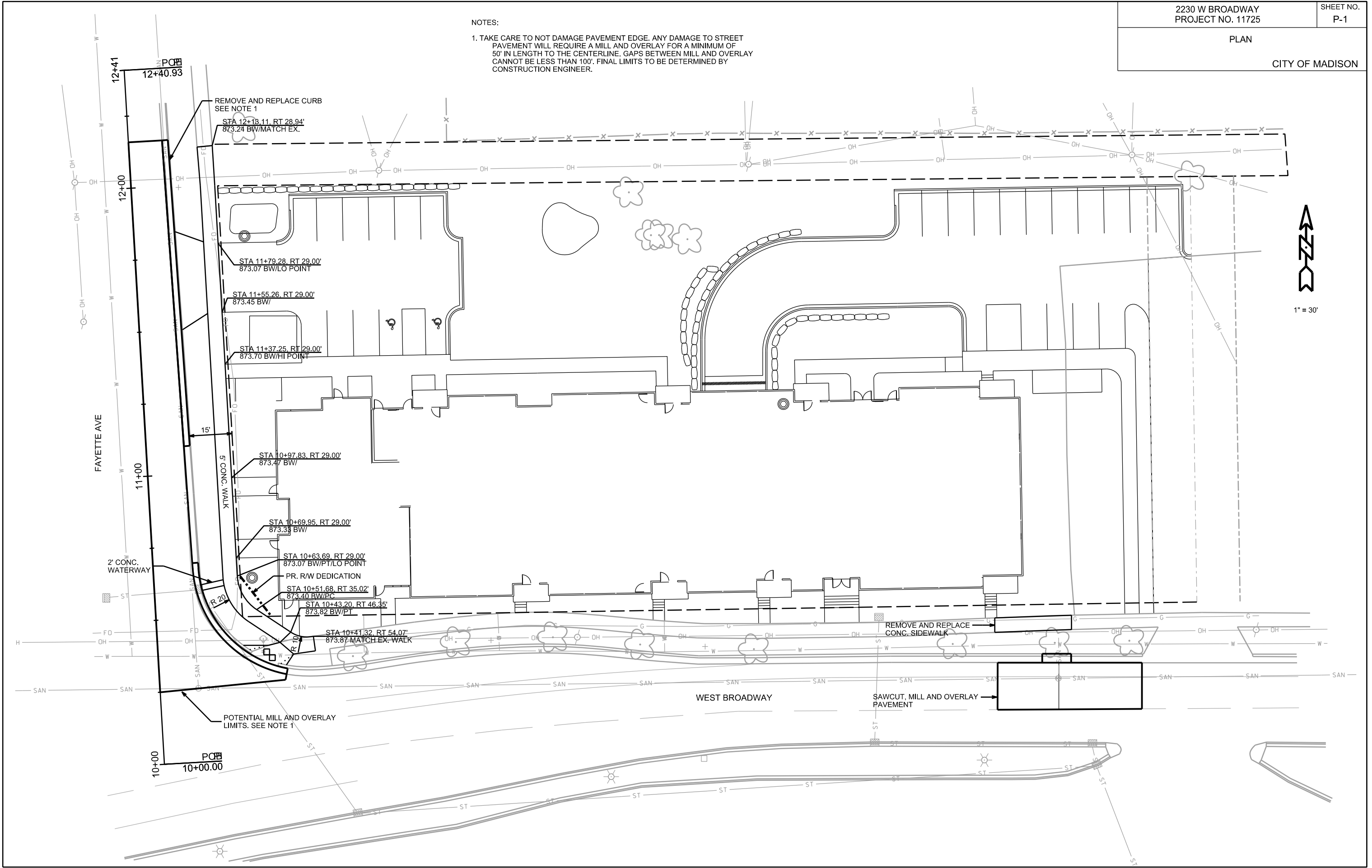


NOTES:

1. TAKE CARE TO NOT DAMAGE PAVEMENT EDGE. ANY DAMAGE TO STREET PAVEMENT WILL REQUIRE A MILL AND OVERLAY FOR A MINIMUM OF 50' IN LENGTH TO THE CENTERLINE. GAPS BETWEEN MILL AND OVERLAY CANNOT BE LESS THAN 100'. FINAL LIMITS TO BE DETERMINED BY CONSTRUCTION ENGINEER.



1" = 30'

PLOT SCALE: _____

PLOT NAME: _____

REV. DATE: _____

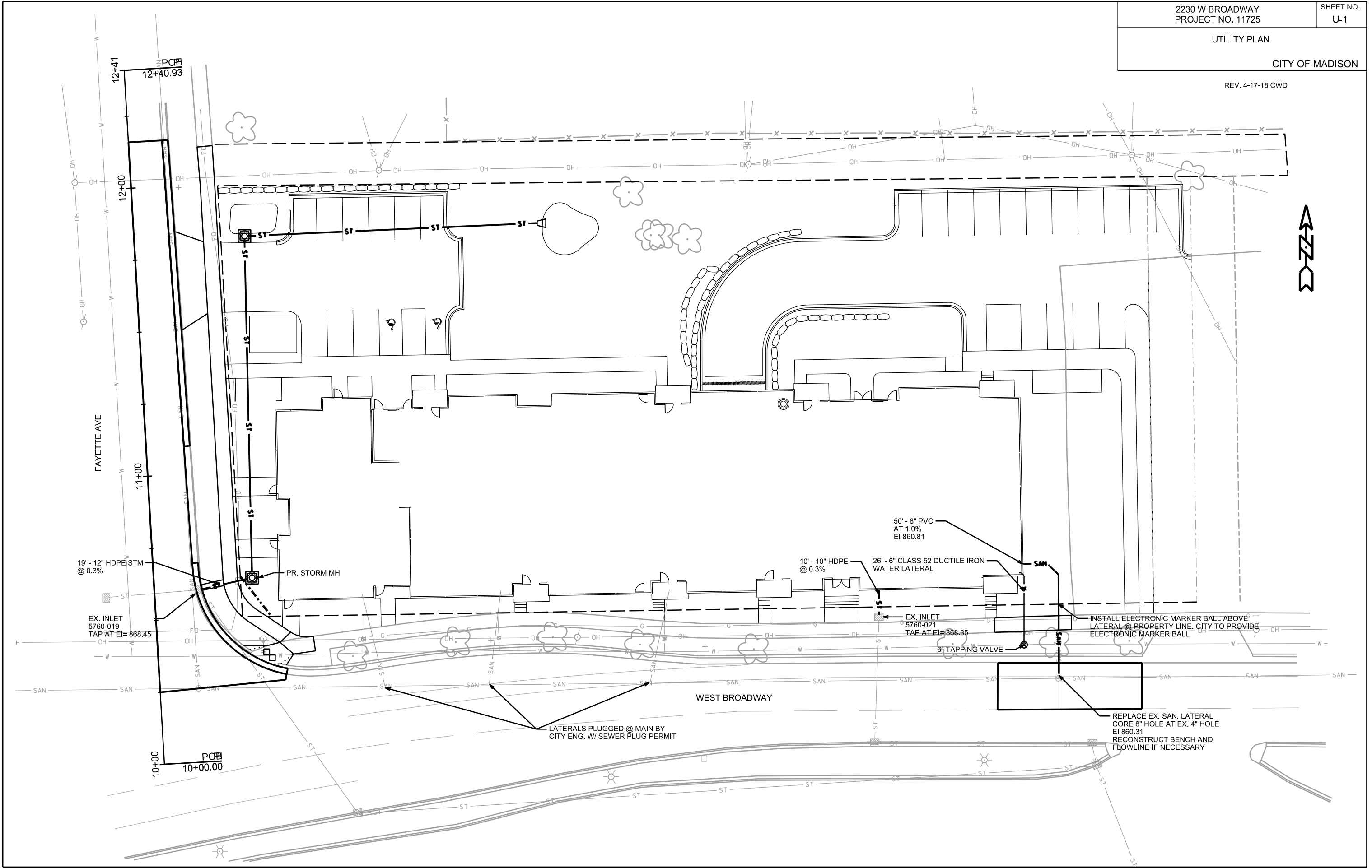
ORIGINATOR: CITY OF MADISON, STREETS DIVISION

PLOT SCALE: _____

PLOT NAME: _____

REV. DATE: _____

ORIGINATOR: CITY OF MADISON, STREETS DIVISION



General Notes

- Existing trees will be studied to determine suitable tree to remain.
- Removal by Contractor: City Forestry will issue a removal permit for 24" diameter Linden tree due to root cutting & grade changes with sidewalk installation. Please contact Brad Hofmann, bhofmann@cityofmadison.com or 266-4816 to obtain the street tree removal permit.
- Removal by Contractor: City Forestry will issue a removal permit for a volunteer Walnut & Boxelder tree growing within a large shrub within direct path of sidewalk installation. Please contact Brad Hofmann, bhofmann@cityofmadison.com or 266-4816 to obtain the street tree removal permit.
- Removal by Contractor: City Forestry will issue a removal permit for a multi-stem stump sprout Boxelder tree. Please contact Brad Hofmann, bhofmann@cityofmadison.com or 266-4816 to obtain the street tree removal permit.
- Existing street trees shall be protected. Contractor shall install tree protection fencing in the area between the curb and sidewalk and extend it at least 5 feet from both sides of the tree along the length of the terrace. No excavation is permitted within 5 feet of the outside edge of a tree trunk. If excavation within 5 feet of any tree is necessary, contractor shall contact City Forestry (266-4816) prior to excavation to assess the impact to the tree and root system. Tree pruning shall be coordinated with City Forestry prior to the start of construction. Tree protection specifications can be found in section 107.13 of City of Madison Standard Specifications for Public Works Construction -http://www.cityofmadison.com/business/pw/documents/StdSpecs/2013/Part1.pdf. Any tree removals that are required for construction after the development plan is approved will require at least a 72 hour wait period before a tree removal permit can be issued by Forestry, to notify the Alder of the change in the tree plan. Contractor shall contact City Forestry Brad Hofmann bhofmann@cityofmadison.com or 266-4816 at least one week prior to planting to schedule inspecting the nursery stock and review planting specifications with the landscaper.
- Contractor shall contact City Forestry Brad Hofmann bhofmann@cityofmadison.com or 266-4816 at least one week prior to planting to schedule inspecting the nursery stock and review planting specifications with the landscaper.

FAYETTE AVENUE



CITY OF MADISON LANDSCAPE WORKSHEET

Landscape Calculations and Distribution

(a) One (1) landscape unit shall be provided for each three hundred (300) square feet of developed area, with the exception of 1h IL and 1G districts as specified in (b) below.
 Total square footage of developed area = 37,231
 Developed area divided by 300 square feet = **124 Landscape Units**

(b) Within the Industrial - Limited (IL) and Industrial - General (IG) districts, one landscape unit shall be provided for every 600 square feet of developed area.
 Total square footage of developed area =
 Developed area divided by 600 square feet = **0 Landscape Units**

(c) One landscape unit consists of 5 landscape points. Landscape points are calculated as shown in the Tabulation of Points and Credits table.
 Landscape units multiplied by 5 landscape points = **621 Total Points Required**

Tabulation of Points and Credits

Plant Type/ Element	Minimum Size at Installation	Points	Credits/ Existing Landscaping		New/ Proposed Landscaping	
			Quantity	Points Achieved	Quantity	Points Achieved
Overstory deciduous tree	2 1/2 inch caliper	35	0	0	5	175
Ornamental Tree	1 1/2 inch caliper	15	0	0	18	270
Evergreen Tree	18" or 3 gallon	15	0	0	18	270
Shrub, deciduous	18" or 3 gallon	2	0	0	90	180
Shrub, evergreen	18" or 3 gallon	3	0	0	39	117
Ornamental Grass	18" or 3 gallon	2	0	0	0	0
Ornamental/ decorative fencing	n/a	4 per 10 lineal ft.	0	0	0	0
Sub Totals						1012
Total Points Provided =		1012				

PLANT LIST

Latin Name	Common Name	Quantity	Scheduled Size	Points Per Plant	Total Points
Existing Plants					
					Existing Points: 0
Proposed Plants					
Amelanchier x grandiflora 'Autumn Brilliance'	Autumn Brilliance Juneberry	4	2in BB	15	60
Buxus x sempervirens 'Green Velvet'	Green Velvet Boxwood	14	#2	3	42
Daphne x burkwoodii 'Carol Mackie'	Carol Mackie Daphne	6	12-15in	2	12
Fothergilla gardenii 'Mt. Airy'	Mt. Airy Fothergilla	4	#5	2	8
Ginkgo biloba 'Autumn Gold'	Autumn Gold Ginkgo	1	#15	35	35
Hydrangea 'BloomStruck'	BloomStruck Hydrangea	3	#1 Grade	2	6
Hydrangea aborescens 'Annabelle'	Annabelle Hydrangea	11	#1 Grade	2	22
Hydrangea macrophylla 'Oregon Pride'	Oregon Pride Hydrangea	3	#1 Grade	2	6
Hydrangea paniculata 'Pink Diamond'	Pink Diamond Hydrangea	3	18in	2	6
Malus 'Prairiefire'	Prairiefire Crab	7	2in BB	15	105
Malus 'Red Jewel'	Red Jewel Crabapple	5	2in BB	15	75
Picea glauca densata 'Black Hills'	Black Hills Spruce	5	6ft BB	15	75
Picea omorika	Serbian Spruce	10	6ft BB	15	150
Pinus strobus	Eastern White Pine	3	6ft BB	15	45
Rosa 'Knockout'	Knockout Rose	13	2 gal	2	26
Spiraea betulifolia 'Tor'	Tor Birchleaf Spirea	6	12-15in	3	18
Spiraea japonica 'Little Princess'	Little Princess Spirea	16	15-18in	2	32
Spiraea japonica 'Shirobi'	Peppermint Stick Spirea	8	12-15in	2	16
Syringa 'Miss Kim'	Miss Kim Lilac	3	2-3ft	2	6
Syringa reticulata 'Ivory Silk'	Ivory Silk Japanese Tree Lilac	3	2in BB	15	45
Taxus x media 'Everlow'	Everlow Yew	13	#5	3	39
Taxus x media 'Tautonii'	Tautonii Yew	1	#5	0	0
Taxus x media 'Tautonii'	Tautonii Yew	10	#5	3	30
Ulmus x 'New Horizon'	New Horizon Elm	4	2in BB	35	140
Viburnum lantana 'Mahican'	Mahican Viburnum	1	3ft	2	2
Weigela florida 'Minuet'	Minuet Weigela	13	12in	2	26
					Proposed Points: 1027
					Total Points: 1027



LANDSCAPE PLAN
MADISON ON BROADWAY
 2230 WEST BROADWAY
 MADISON, WISCONSIN

