

Madison, Wisconsin

CITY OF MADISON

CITY ENGINEERING DIVISION

DEPARTMENT OF PUBLIC WORKS

PLAN OF PROPOSED IMPROVEMENT

PUBLIC IMPROVEMENT PROJECT APPROVED

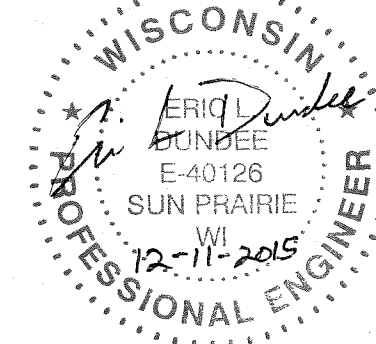
NOVEMBER 3, 2011

BY THE COMMON COUNCIL OF MADISON, WISCONSIN

PUBLIC IMPROVEMENT DESIGN APPROVED BY:

[Signature] 12/11/15
City Engineer Date

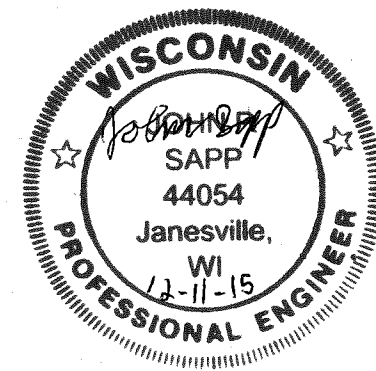
STORM SEWER DESIGN BY:



SANITARY SEWER: LATERALS ONLY

NO PUBLIC SEWER MAIN
12/10/15 MAM

STREET DESIGNED BY:



INDEX OF SHEETS

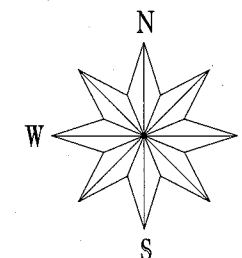
SHEET NO.	TITLE
1	DETAILS
DI-D2	STREET PLAN
P1	UTILITY PLAN
U1	

906-910 WILLIAMSON STREET

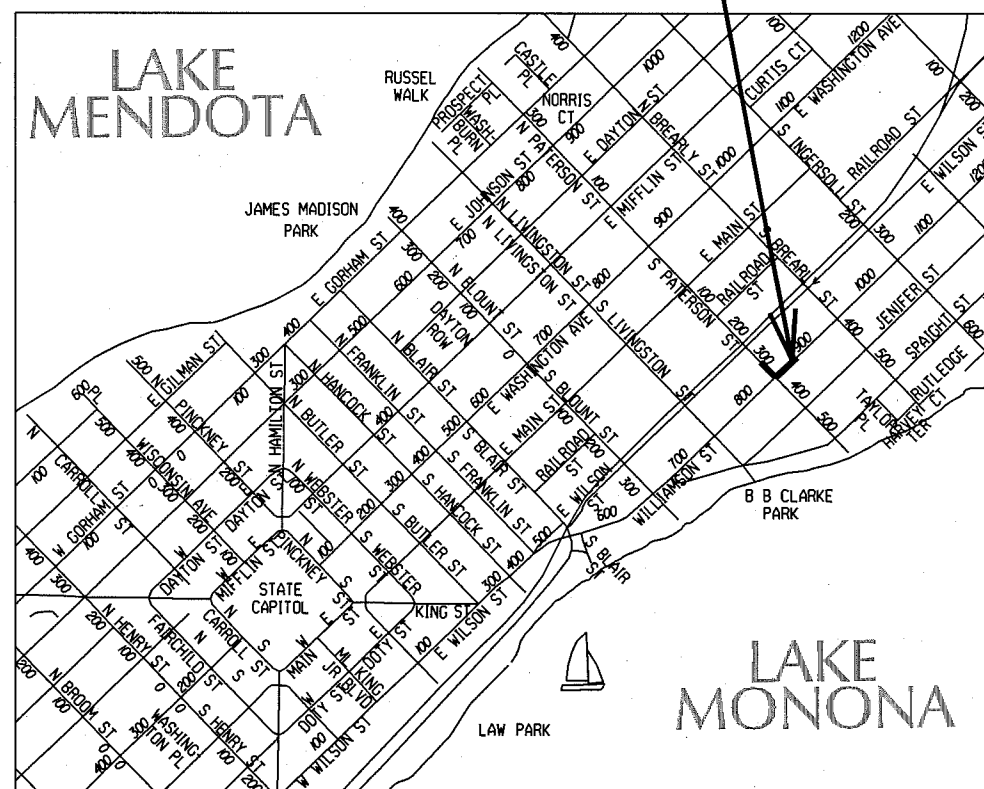
CITY PROJECT NO. 11198

CITY CONTRACT NO. 7594

MUNIS NO. 11198



CONSTRUCTION PROJECT LOCATION



CONVENTIONAL SIGNS

FIELD VERIFY ALL UTILITY LOCATIONS

GAS	— G —
STORM SEWER	— ST —
SANITARY SEWER	— SAN —
WATER	— W —
OVERHEAD ELECTRIC	— OH —
POWER POLE	⊕
ADA COMPLIANT RAMP W/ DETECTABLE WARNING FIELD	
COMBUSTIBLE FLUIDS	

NOTES:

ALL GUTTERS SHALL DRAIN WITH A MINIMUM GRADE OF 0.50% TOWARD STORM SEWER INLETS.

SIDEWALK RAMPS AND CURB THRU SIDEWALK RAMPS SHALL HAVE A MAXIMUM SLOPE OF 1" PER 12". SIDEWALK AND CURB RAMPS SHALL BE CONSTRUCTED WITH A SIDE SLOPE OF 2.00%. SIDEWALK SHALL HAVE A MINIMUM LONGITUDINAL SLOPE OF 0.50% AND A MAXIMUM LONGITUDINAL SLOPE OF 5.00% EXCEPT WHERE STREET GRADES EXCEED 5.00%.

PLOT SCALE:

PLOT NAME:

REV. DATE:

ORIGINATOR: CITY OF MADISON, STREETS DIVISION

DETAIL

STANDARD NOTES
AND COMMENTS CITY OF MADISON

REV. 2016 02-08 BY JOHN SAPP

CONTRACTOR/DEVELOPER SHALL SUBMIT A TRAFFIC CONTROL PLAN TO CITY TRAFFIC ENGINEERING AT LEAST 10 WORKING DAYS PRIOR TO THE START OF WORK. WORK WITHIN THE RIGHT-OF-WAY SHALL NOT BEGIN UNTIL THE TRAFFIC CONTROL PLAN IS APPROVED.

ANY PAVEMENT MARKINGS THAT ARE REMOVED OR DAMAGED SHALL BE REPLACED BY THE DEVELOPER/CONTRACTOR AS DIRECTED BY CITY TRAFFIC ENGINEERING.

THE LOCATION AND INFORMATION FOR PROPOSED NEW TREES, IN THE PUBLIC RIGHT OF WAY OR ON PUBLIC LANDS ARE APPROXIMATE AND ARE SHOWN FOR REFERENCE ONLY.

CONTRACTOR SHALL CONTACT BRIAN MEILLER WITH CITY FORESTRY ((608) 444-2673 OR (608) 266-4890) AT LEAST ONE WEEK PRIOR TO PLANTING TO ALLOW FORESTRY TO MARK THE PLANTING SITES AND REVIEW PLANTING SPECIFICATIONS WITH THE LANDSCAPING CONTRACTOR. TREE PLANTING WITHIN THE PUBLIC RIGHT OF WAY OR ON PUBLIC LANDS SHALL BE APPROVED BY THE CITY FORESTER PRIOR TO INSTALLATION.

NO TREES IN THE RIGHT OF WAY OR ON PUBLIC LANDS SHALL BE TRIMMED, PRUNED, REMOVED OR ADVERSELY AFFECTED IN ANY WAY UNTIL THE DEVELOPER HAS RECEIVED WRITTEN PERMISSION FROM THE CITY ENGINEER OR CITY FORESTER. SAID WRITTEN PERMISSION SHALL INCLUDE LANGUAGE INDICATING THAT SECTION 10.101 OF THE MADISON GENERAL ORDINANCES AND ADMINISTRATIVE PROCEDURE MEMORANDUM NO. 6-2, REFERING TO NOTIFICATION OF PROPERTY OCCUPANTS AND/OR OWNERS, HAS BEEN COMPLIED WITH.

CONTRACTOR SHALL INSTALL TREE PROTECTION FENCING IN THE AREA BETWEEN THE CURB AND SIDEWALK AND EXTEND IT AT LEAST 5 FEET FROM BOTH SIDES OF THE TREE ALONG THE LENGTH OF THE TERRACE. NO EXCAVATION IS PERMITTED WITHIN 5 FEET OF THE OUTSIDE EDGE OF A TREE TRUNK. IF EXCAVATION WITHIN 5 FEET OF ANY TREE IS NECESSARY, CONTRACTOR SHALL CONTACT CITY FORESTRY (266-4816) PRIOR TO EXCAVATION TO ASSESS THE IMPACT TO THE TREE AND ROOT SYSTEM. TREE PRUNING SHALL BE COORDINATED WITH CITY FORESTRY. TREE PROTECTION SPECIFICATIONS CAN BE FOUND IN SECTION 107.13 OF CITY OF MADISON STANDARD SPECIFICATIONS FOR PUBLIC WORKS CONSTRUCTION

ALL PAVEMENT WITHIN THE WILLIAMSON STREET RIGHT-OF-WAY SHALL CONSIST OF 2.5" BITUMINOUS UPPER LAYER, 12.5MM, TYPE E-3
4" BITUMINOUS LOWER LAYER, 19MM, TYPE E-3

ALL PAVEMENT WITHIN THE SOUTH PATERSON STREET RIGHT-OF-WAY SHALL BE TYPE B PAVEMENT.

ALL GUTTERS SHALL DRAIN WITH A MINIMUM GRADES OF 0.5% TOWARD STORM SEWER INLETS.

THE CROSS SLOPE OF SIDEWALKS AND BARRIER FREE SIDEWALK CURB RAMPS SHALL BE 2%. THE LONGITUDINAL GRADE OF BARRIER FREE SIDEWALK CURB RAMPS SHALL NOT EXCEED 8.33%. ALL SIDEWALK RAMPS SHALL BE CONSTRUCTED ACCORDING TO S.D.D. 3.03. AT ALL OTHER LOCATIONS THE LONGITUDINAL GRADE OF SIDEWALKS SHALL NOT EXCEED 5.0 % OR THE ADJACENT STREET GRADE WHICHEVER IS GREATER NOR BE LESS THAN 0.4% AND SHALL DRAIN TOWARD STORM SEWER INLETS. SIDE SLOPES WITHIN TEN FEET OF A PUBLIC SIDEWALK SHALL NOT EXCEED 4.00:1. ALL SIDEWALK AND SIDEWALK RAMP ELEVATIONS AND GRADES SHALL BE FIELD VERIFIED AND SET TO COMPLY WITH THE CITY OF MADISON STANDARD SPECIFICATIONS AND THE A.D.A. GUIDELINES.

OBTAIN A PRINT OUT OF THE ALIGNMENT FROM THE CITY ENGINEER PRIOR TO STAKING THIS PROJECT.

CURB STATION AND OFFSETS SHALL BE TO THE FACE OF CURB UNLESS OTHERWISE INDICATED. CURB ELEVATIONS SHALL BE TO THE TOP OF CURB (OR EXTENDED TOP OF CURB FOR DRIVEWAYS OR RAMPS) UNLESS OTHERWISE INDICATED.

POWER POLES AND OTHER OBSTRUCTIONS SHALL BE MOVED TO PROVIDE 2 FEET MINIMUM OF CLEAR DISTANCE FROM ANY FACE OF CURB OR EDGE OF SIDEWALK.

ANY INFORMATION SHOWN ON THIS PLAN, WHICH IS NOT PART OF THIS PROJECT, IS PRELIMINARY AND NOT FOR CONSTRUCTION.

THERE MAY BE EXISTING UTILITIES OR OTHER FEATURES WHICH ARE EITHER NOT SHOWN OR SHOWN INCORRECTLY ON THIS PLAN. IT IS THE RESPONSIBILITY OF THE DEVELOPER TO LOCATE AND IDENTIFY ALL UTILITIES AND TOPOGRAPHY WHICH MAY AFFECT THE CONSTRUCTION OF THESE IMPROVEMENTS.

ALL PERMANENT SIGNING AND POSTING WILL BE DETERMINED AND PROVIDED BY THE TRAFFIC ENGINEERING DIVISION, FOLLOWING CONSTRUCTION OF THESE IMPROVEMENTS.

THE DEVELOPER SHALL PROVIDE, INSTALL AND MAINTAIN ALL STREET END BARRICADES, SIGNING AND TRAFFIC CONTROL, AS REQUIRED BY THE CITY TRAFFIC ENGINEER.

PAVEMENT SAWCUTS SHALL BE AS DIRECTED BY THE CITY CONSTRUCTION ENGINEER. SAWCUTS SHOWN ON THE PLAN ARE APPROXIMATE.

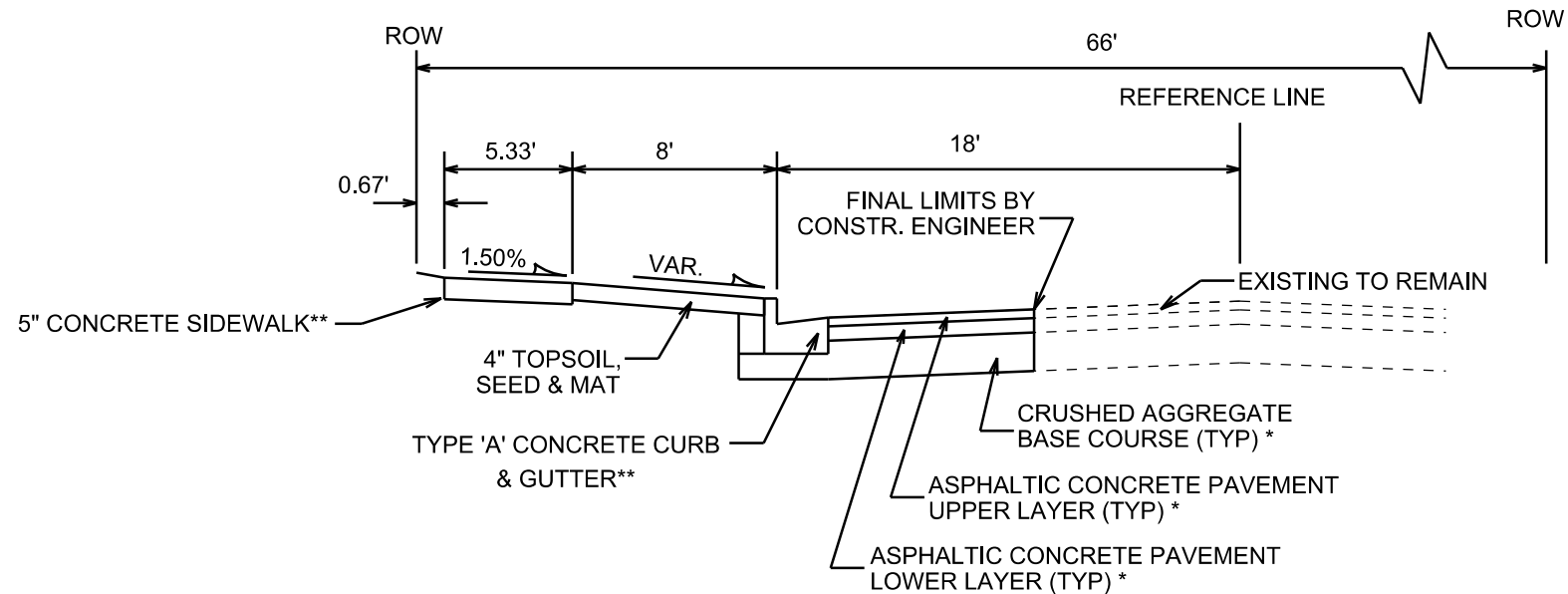
DAMAGE TO ANY EXISTING CURB, PAVEMENT, SIDEWALK, ETC. THAT IS TO REMAIN SHALL BE REPAIRED BY THE DEVELOPER/CONTRACTOR AS DIRECTED BY THE ENGINEER.

PLOT SCALE: _____

PLOT NAME: _____

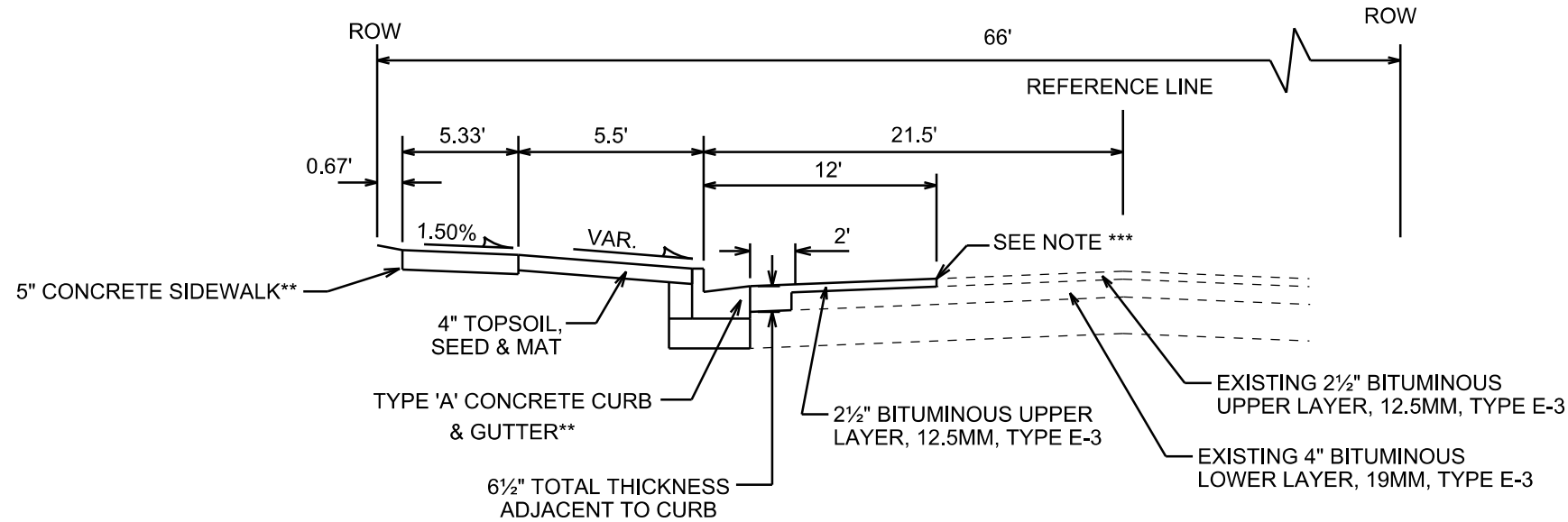
REV. DATE: _____

ORIGINATOR: CITY OF MADISON, STREETS DIVISION



TYPICAL SECTION

S. PATERSON ST.



TYPICAL SECTION

WILLIAMSON ST.

NOTES:

TYPICAL SECTIONS NOT TO SCALE

* SOUTH PATERSON STREET IS TYPE 'B' PAVEMENT PER CITY OF MADISON MINIMUM PAVEMENT DESIGN. REPLACE PAVEMENT AS SHOWN ON THE PLANS.
WILLIAMSON STREET IS TYPE 'C' PAVEMENT PER CITY OF MADISON MINIMUM PAVEMENT DESIGN. REPLACE PAVEMENT AS SHOWN ON THE PLANS.

** REPLACE CURB AND SIDEWALK AS SHOWN ON THE PLANS.

***TAKE CARE TO NOT DAMAGE PAVEMENT EDGE DURING CURB WORK. OTHERWISE, 2½" MILL & OVERLAY TO STREET LANE EDGE. FINAL LIMITS BY CONSTRUCTION ENGINEER.

CITY OF MADISON MINIMUM PAVEMENT DESIGN

TYPE	CRUSHED AGG. BASE COURSE		ASPHALTIC CONCRETE PAVEMENT			
	LOWER LAYER GRADATION 1	UPPER LAYER GRADATION 2	LOWER LAYER TYPE	LOWER LAYER THICKNESS	UPPER LAYER TYPE	UPPER LAYER THICKNESS
A	6"	4"	E-0.3	1.75"	E-0.3	1.75"
B	6"	4"	E-1	2.25"	E-1	2"
C	6"	4"	E-3	3.25"	E-3	2"

PLOT SCALE: _____

PLOT NAME: _____

REV. DATE: _____

ORIGINATOR: CITY OF MADISON, STREETS DIVISION

REV. 2016 02-08
BY JOHN SAPP

912 WILLIAMSON ST.

906-910 WILLIAMSON ST.

303 S. PATERSON ST.

S. PATERSON ST.

WILLIAMSON ST.

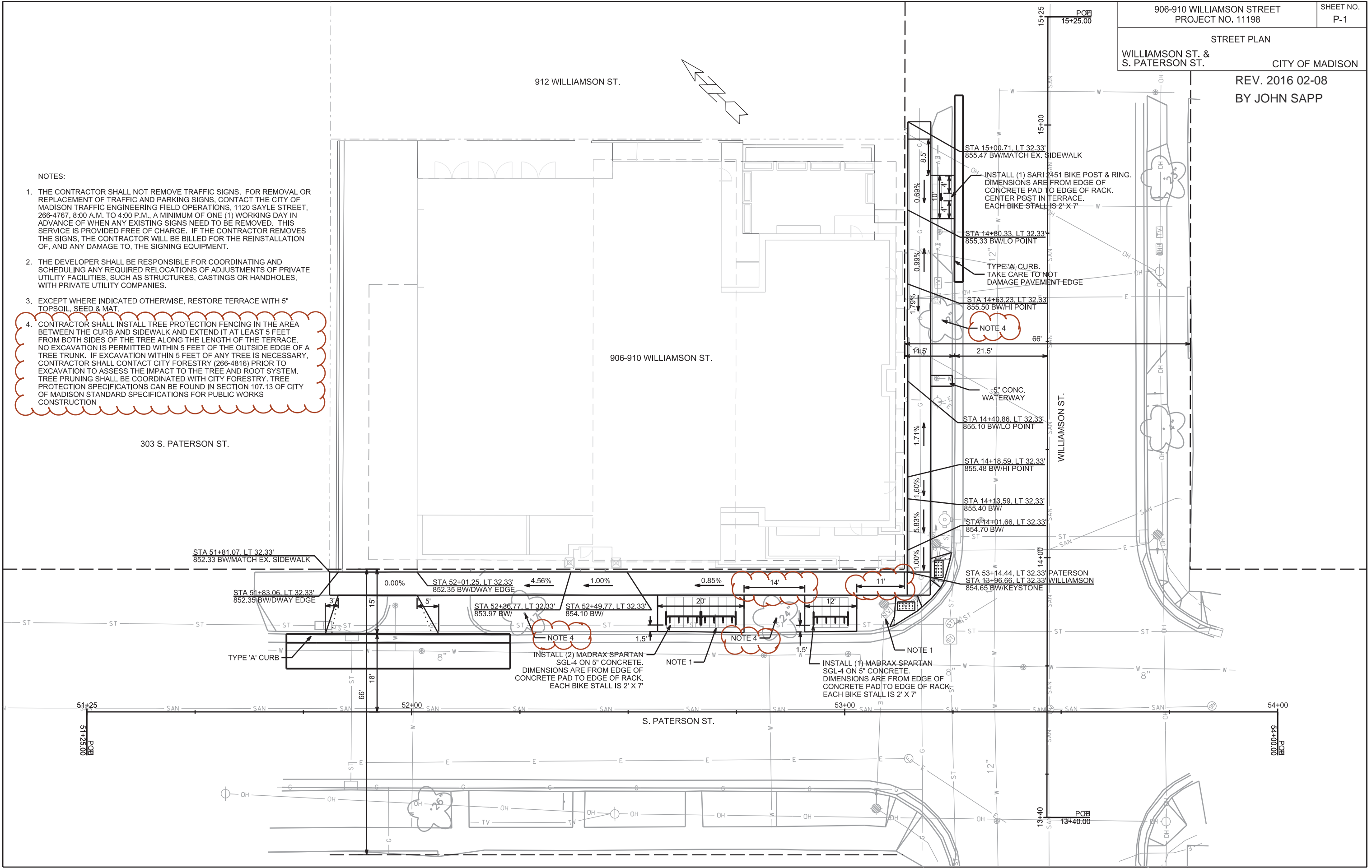
- NOTES:
1. THE CONTRACTOR SHALL NOT REMOVE TRAFFIC SIGNS. FOR REMOVAL OR REPLACEMENT OF TRAFFIC AND PARKING SIGNS, CONTACT THE CITY OF MADISON TRAFFIC ENGINEERING FIELD OPERATIONS, 1120 SAYLE STREET, 266-4767, 8:00 A.M. TO 4:00 P.M., A MINIMUM OF ONE (1) WORKING DAY IN ADVANCE OF WHEN ANY EXISTING SIGNS NEED TO BE REMOVED. THIS SERVICE IS PROVIDED FREE OF CHARGE. IF THE CONTRACTOR REMOVES THE SIGNS, THE CONTRACTOR WILL BE BILLED FOR THE REINSTALLATION OF, AND ANY DAMAGE TO, THE SIGNING EQUIPMENT.
 2. THE DEVELOPER SHALL BE RESPONSIBLE FOR COORDINATING AND SCHEDULING ANY REQUIRED RELOCATIONS OF ADJUSTMENTS OF PRIVATE UTILITY FACILITIES, SUCH AS STRUCTURES, CASTINGS OR HANDHOLES, WITH PRIVATE UTILITY COMPANIES.
 3. EXCEPT WHERE INDICATED OTHERWISE, RESTORE TERRACE WITH 5" TOPSOIL, SEED & MAT.

4. CONTRACTOR SHALL INSTALL TREE PROTECTION FENCING IN THE AREA BETWEEN THE CURB AND SIDEWALK AND EXTEND IT AT LEAST 5 FEET FROM BOTH SIDES OF THE TREE ALONG THE LENGTH OF THE TERRACE. NO EXCAVATION IS PERMITTED WITHIN 5 FEET OF THE OUTSIDE EDGE OF A TREE TRUNK. IF EXCAVATION WITHIN 5 FEET OF ANY TREE IS NECESSARY, CONTRACTOR SHALL CONTACT CITY FORESTRY (266-4816) PRIOR TO EXCAVATION TO ASSESS THE IMPACT TO THE TREE AND ROOT SYSTEM. TREE PRUNING SHALL BE COORDINATED WITH CITY FORESTRY. TREE PROTECTION SPECIFICATIONS CAN BE FOUND IN SECTION 107.13 OF CITY OF MADISON STANDARD SPECIFICATIONS FOR PUBLIC WORKS CONSTRUCTION

INSTALL (1) SARI 2451 BIKE POST & RING. DIMENSIONS ARE FROM EDGE OF CONCRETE PAD TO EDGE OF RACK. CENTER POST IN TERRACE. EACH BIKE STALL IS 2' X 7'

INSTALL (2) MADRAX SPARTAN SGL-4 ON 5" CONCRETE. DIMENSIONS ARE FROM EDGE OF CONCRETE PAD TO EDGE OF RACK. EACH BIKE STALL IS 2' X 7'

INSTALL (1) MADRAX SPARTAN SGL-4 ON 5" CONCRETE. DIMENSIONS ARE FROM EDGE OF CONCRETE PAD TO EDGE OF RACK. EACH BIKE STALL IS 2' X 7'

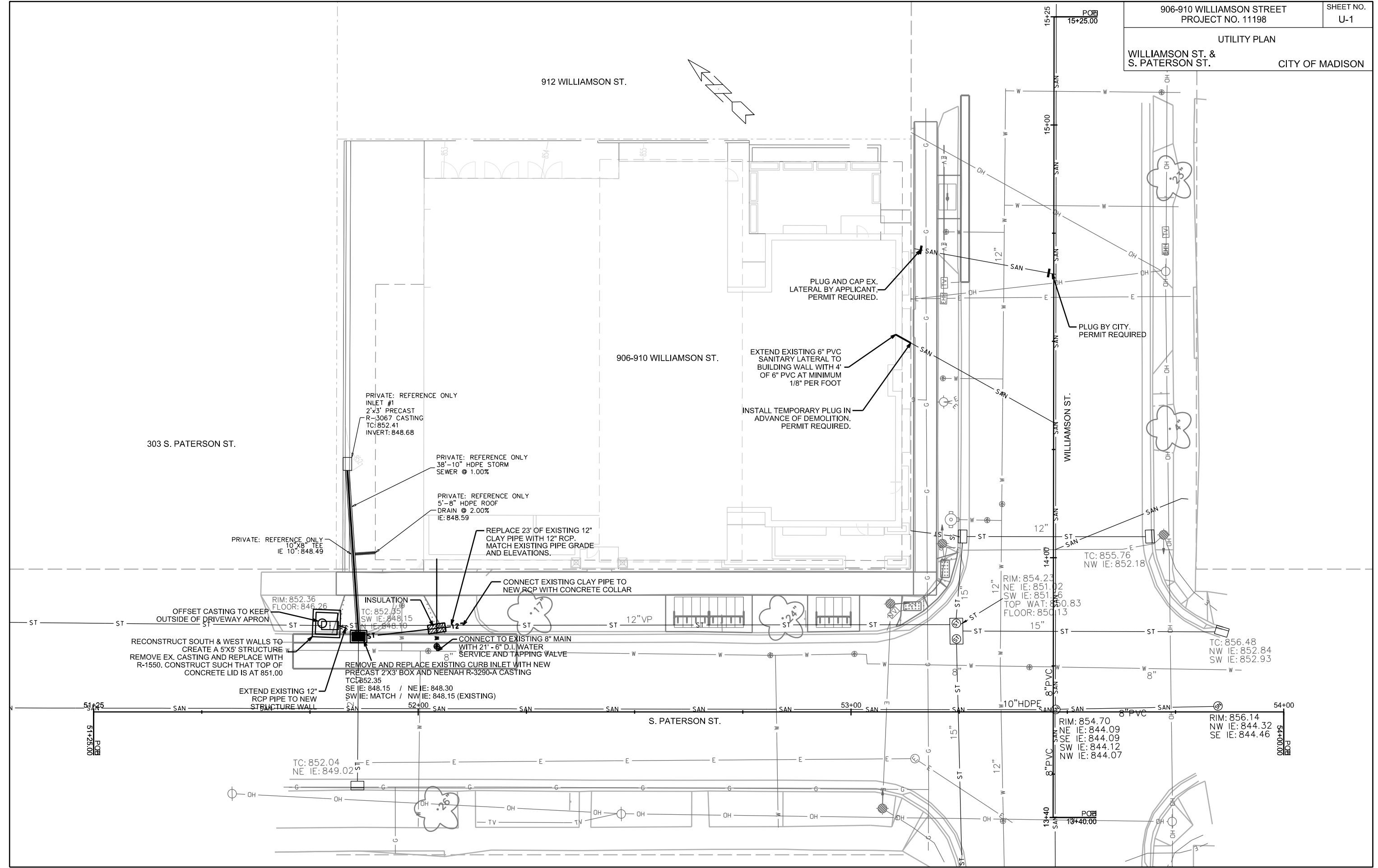


PLOT SCALE:

PLOT NAME:

REV. DATE:

ORIGINATOR: CITY OF MADISON, STREETS DIVISION



PLOT SCALE: _____

PLOT NAME: _____

REV. DATE: _____

ORIGINATOR: CITY OF MADISON, STREETS DIVISION