

Madison, Wisconsin

# CITY OF MADISON

CITY ENGINEERING DIVISION  
DEPARTMENT OF PUBLIC WORKS

## PLAN OF PROPOSED IMPROVEMENT

NORTH ADDITION TO  
GRANDVIEW COMMONS PHASE 6

CITY PROJECT NO. 11911  
CITY CONTRACT NO. 8137  
MUNIS NO. 11911

PUBLIC IMPROVEMENT PROJECT  
APPROVED

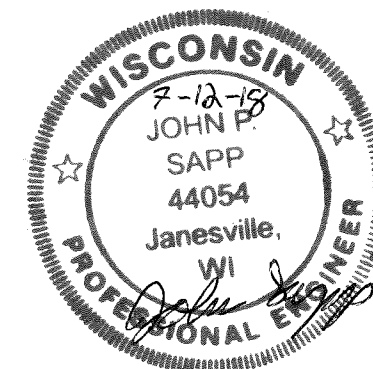
MARCH 20, 2018

BY THE COMMON COUNCIL  
OF MADISON, WISCONSIN

PUBLIC IMPROVEMENT DESIGN  
APPROVED BY:

*[Signature]* 7/27/18  
City Engineer Date

STREET GRADES  
DESIGNED BY:

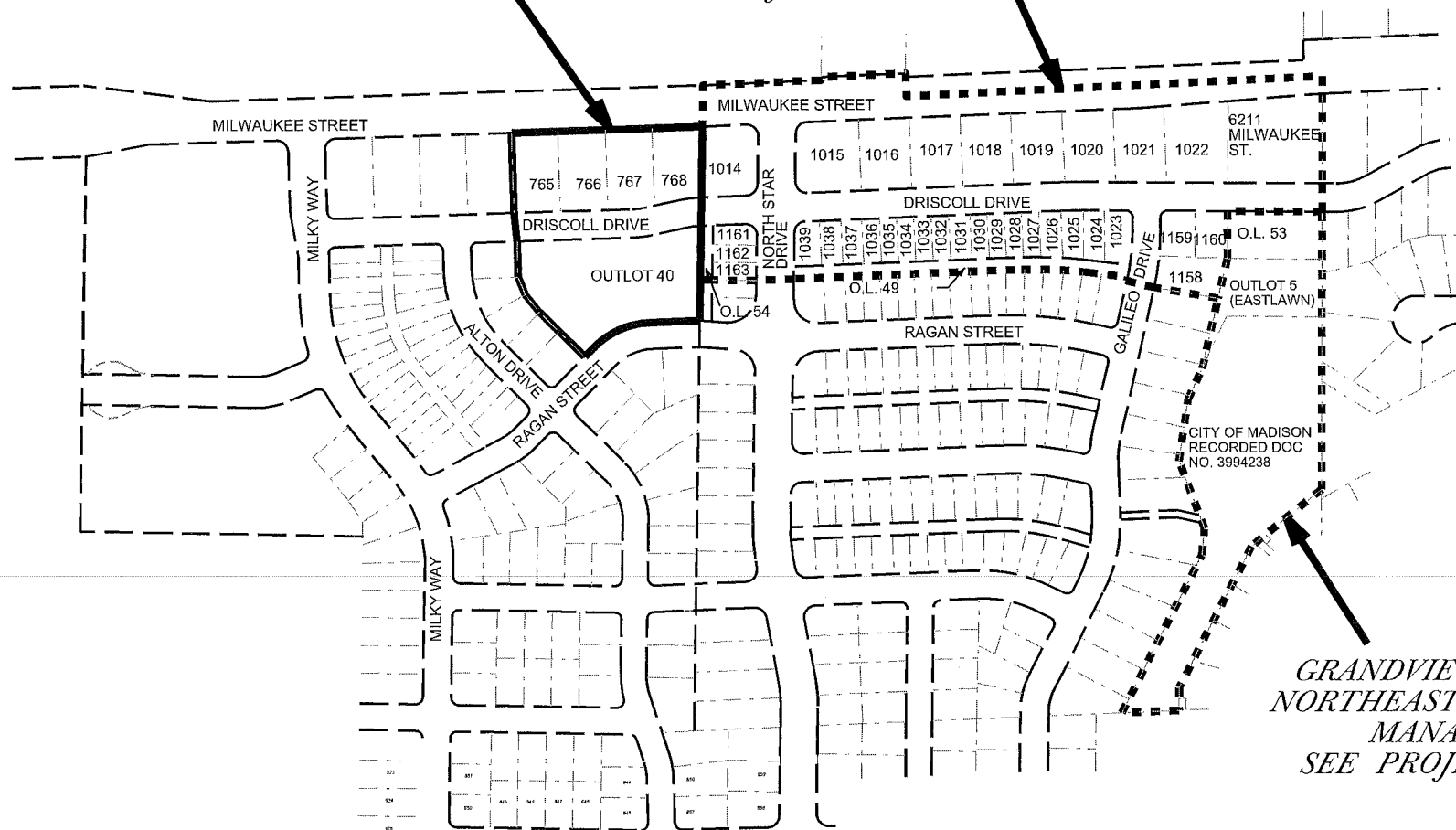


INDEX OF SHEETS

SHEET NO.	DI-D2	DETAILS
SHEET NO.	PI-P3	STREET PLAN AND PROFILES
SHEET NO.	UI	UTILITIES PLAN AND PROFILE
SHEET NO.	USAN	SANITARY SEWER SCHEDULE
SHEET NO.	USTM	STORM SEWER SCHEDULE
SHEET NO.	I	OL 40 INFILTRATION BASIN GRADING
SHEET NO.	W1	WATER PLAN AND PROFILE
SHEET NO.	W2	WATER MATERIALS
SHEET NO.	XI-X2	MILWAUKEE ST. CROSS-SECTIONS

GRANDVIEW COMMONS  
NORTH PHASE 6  
(CURRENT)

GRANDVIEW COMMONS  
NORTHEAST PH 1  
SEE PROJECT NO. 11912

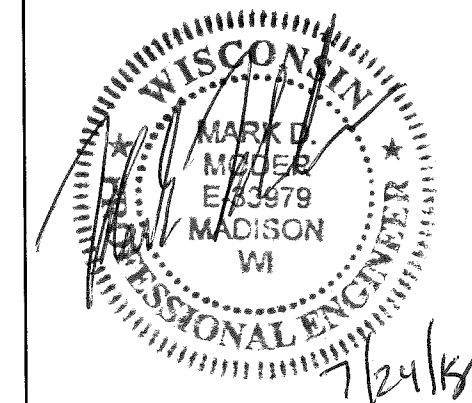


GRANDVIEW COMMONS  
NORTHEAST STORMWATER  
MANAGEMENT  
SEE PROJECT NO. 11924

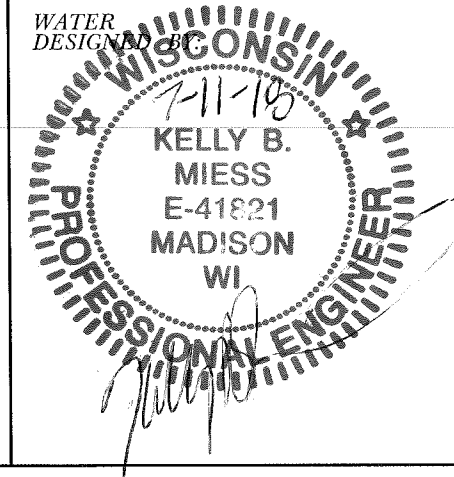
STORM WATER PONDS  
DESIGNED BY:

SEE  
INDIVIDUAL  
SHEETS

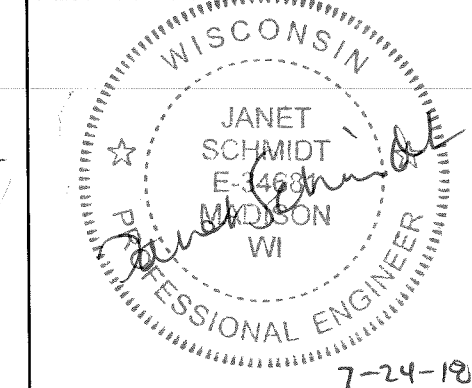
SANITARY SEWER  
DESIGNED BY:



WATER  
DESIGNED BY:



STORM SEWER  
DESIGNED BY:



THE LOCATION AND INFORMATION FOR PROPOSED NEW TREES, IN THE PUBLIC RIGHT OF WAY OR ON PUBLIC LANDS ARE APPROXIMATE AND ARE SHOWN FOR REFERENCE ONLY. THE LOCATIONS, SPECIFICATIONS AND PLANTING METHODS OF ALL PROPOSED NEW OR REPLACEMENT TREES IN THE PUBLIC RIGHT OF WAY OR ON PUBLIC LANDS SHALL BE APPROVED BY THE CITY FORESTER PRIOR TO INSTALLATION.

NO TREES IN THE RIGHT OF WAY OR ON PUBLIC LANDS SHALL BE TRIMMED, PRUNED, REMOVED OR ADVERSELY AFFECTED IN ANY WAY UNTIL THE DEVELOPER HAS RECEIVED WRITTEN PERMISSION FROM THE CITY ENGINEER OR CITY FORESTER. SAID WRITTEN PERMISSION SHALL INCLUDE LANGUAGE INDICATING THAT SECTION 10.101 OF THE MADISON GENERAL ORDINANCES AND ADMINISTRATIVE PROCEDURE MEMORANDUM NO. 6-2, REFERRING TO NOTIFICATION OF PROPERTY OCCUPANTS AND/OR OWNERS, HAS BEEN COMPLIED WITH.

DEVELOPER MUST SUBMIT A TRAFFIC CONTROL PLAN TO CITY TRAFFIC ENGINEERING AT LEAST 14 DAYS PRIOR TO THE START OF WORK. WORK SHALL NOT PROCEED UNTIL AN APPROVED TRAFFIC CONTROL PLAN IS IN PLACE

ALL PAVEMENT IN THE DRISCOLL DRIVE RIGHT-OF-WAY SHALL BE TYPE A PAVEMENT PER STANDARD DETAIL DRAWING 4.02.

ALL PAVEMENT IN THE MILWAUKEE STREET RIGHTS-OF-WAY SHALL BE TYPE C PAVEMENT PER STANDARD DETAIL DRAWING 4.02.

UNDERDRAINS SHALL BE INSTALLED, PER STANDARD DETAIL DRAWING 4.05 FOR 75' ON EACH SIDE OF THE LOW POINT, OR TO THE NEAREST CURB HIGH POINT. ALL UNDERDRAIN SHALL BE WRAPPED.

ALL GUTTERS SHALL DRAIN WITH A MINIMUM GRADES OF 0.5% TOWARD STORM SEWER INLETS.

ALL DITCHES SHALL DRAIN WITH A MINIMUM GRADES OF 0.5%

THE CROSS SLOPE OF SIDEWALKS AND BARRIER FREE SIDEWALK CURB RAMPS SHALL TYPICALLY BE 1.5%. THE LONGITUDINAL GRADE OF BARRIER FREE SIDEWALK CURB RAMPS SHALL NOT EXCEED 8.33%. ALL SIDEWALK RAMPS SHALL BE CONSTRUCTED ACCORDING TO S.D.D. 3.03. AT ALL OTHER LOCATIONS THE LONGITUDINAL GRADE OF SIDEWALKS SHALL NOT EXCEED 5.0 % OR THE ADJACENT STREET GRADE WHICHEVER IS GREATER NOR BE LESS THAN 0.5% AND SHALL DRAIN TOWARD STORM SEWER INLETS. SIDE SLOPES WITHIN TEN FEET OF A PUBLIC SIDEWALK SHALL NOT EXCEED 4.00:1. ALL SIDEWALK AND SIDEWALK RAMP ELEVATIONS AND GRADES SHALL BE FIELD VERIFIED AND SET TO COMPLY WITH THE CITY OF MADISON STANDARD SPECIFICATIONS AND THE A.D.A. GUIDELINES.

OBTAIN A PRINT OUT OF THE ALIGNMENT FROM THE CITY ENGINEER PRIOR TO STAKING THIS PROJECT.

CURB STATION AND OFFSETS SHALL BE TO THE FACE OF CURB UNLESS OTHERWISE INDICATED. CURB ELEVATIONS SHALL BE TO THE TOP OF CURB (OR EXTENDED TOP OF CURB FOR DRIVEWAYS OR RAMPS) UNLESS OTHERWISE INDICATED.

POWER POLES AND OTHER OBSTRUCTIONS SHALL BE MOVED TO PROVIDE 2 FEET MINIMUM OF CLEAR DISTANCE FROM ANY FACE OF CURB OR EDGE OF SIDEWALK.

ANY INFORMATION SHOWN ON THIS PLAN, WHICH IS NOT PART OF THIS PROJECT, IS PRELIMINARY AND NOT FOR CONSTRUCTION.

THERE MAY BE EXISTING UTILITIES OR OTHER FEATURES WHICH ARE EITHER NOT SHOWN OR SHOWN INCORRECTLY ON THIS PLAN. IT IS THE RESPONSIBILITY OF THE DEVELOPER TO LOCATE AND IDENTIFY ALL UTILITIES AND TOPOGRAPHY WHICH MAY AFFECT THE CONSTRUCTION OF THESE IMPROVEMENTS.



ALL PERMANENT SIGNING AND POSTING WILL BE DETERMINED AND PROVIDED BY THE TRAFFIC ENGINEERING DIVISION, FOLLOWING CONSTRUCTION OF THESE IMPROVEMENTS.

THE DEVELOPER SHALL PROVIDE, INSTALL AND MAINTAIN ALL STREET END BARRICADES, SIGNING AND TRAFFIC CONTROL, AS REQUIRED BY THE CITY TRAFFIC ENGINEER.

PAVEMENT SAWCUTS SHALL BE AS DIRECTED BY THE CITY CONSTRUCTION ENGINEER. SAWCUTS SHOWN ON THE PLAN ARE APPROXIMATE.

CURB ON CUL DE SACS SHALL BE INSTALLED ACCORDING TO SDD 3.05.

ALL WORK IN THE RIGHT OF WAY AND PUBLIC EASEMENTS SHALL BE IN ACCORDANCE WITH THE CITY OF MADISON STANDARD SPECIFICATIONS FOR PUBLIC WORKS CONSTRUCTION

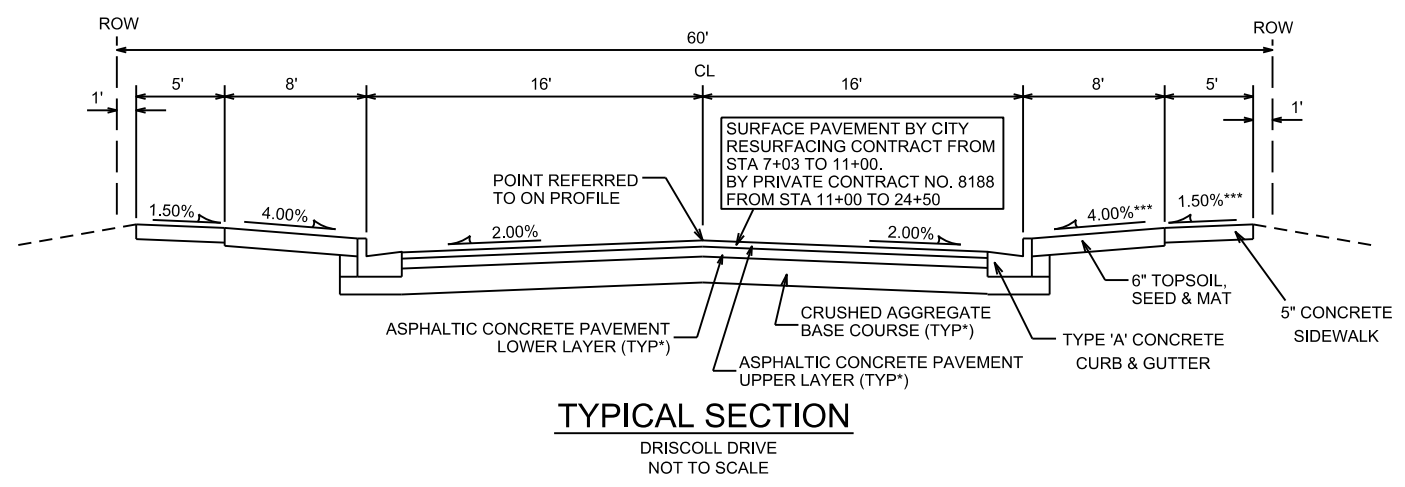
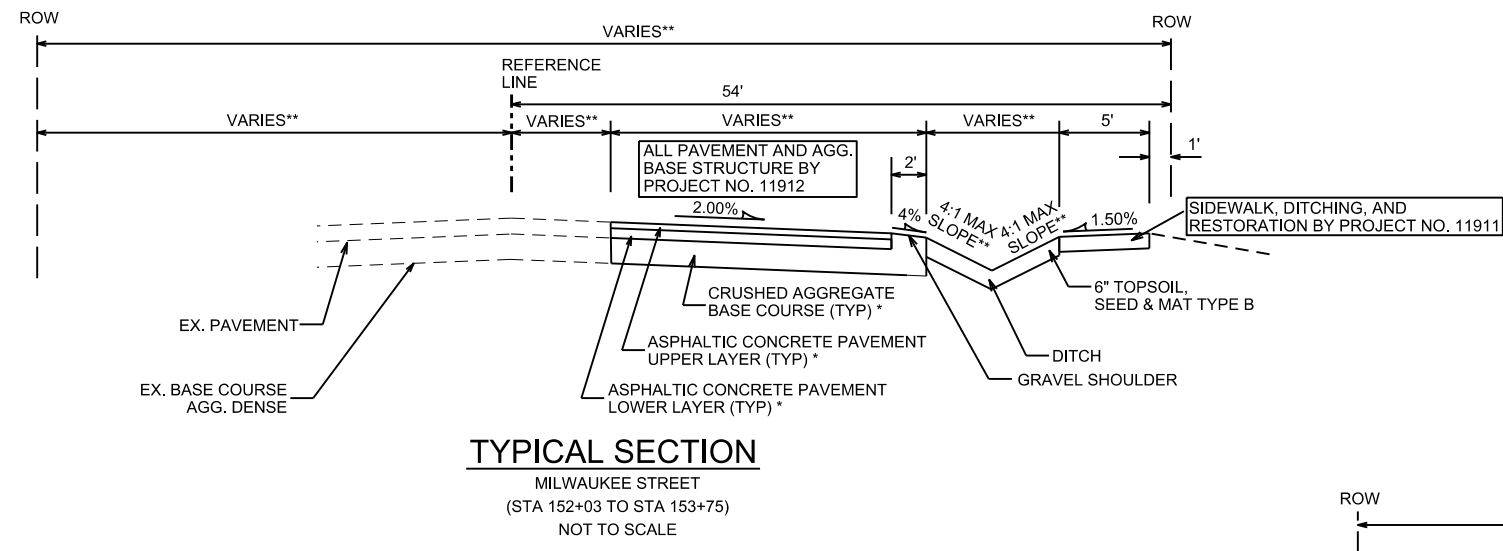
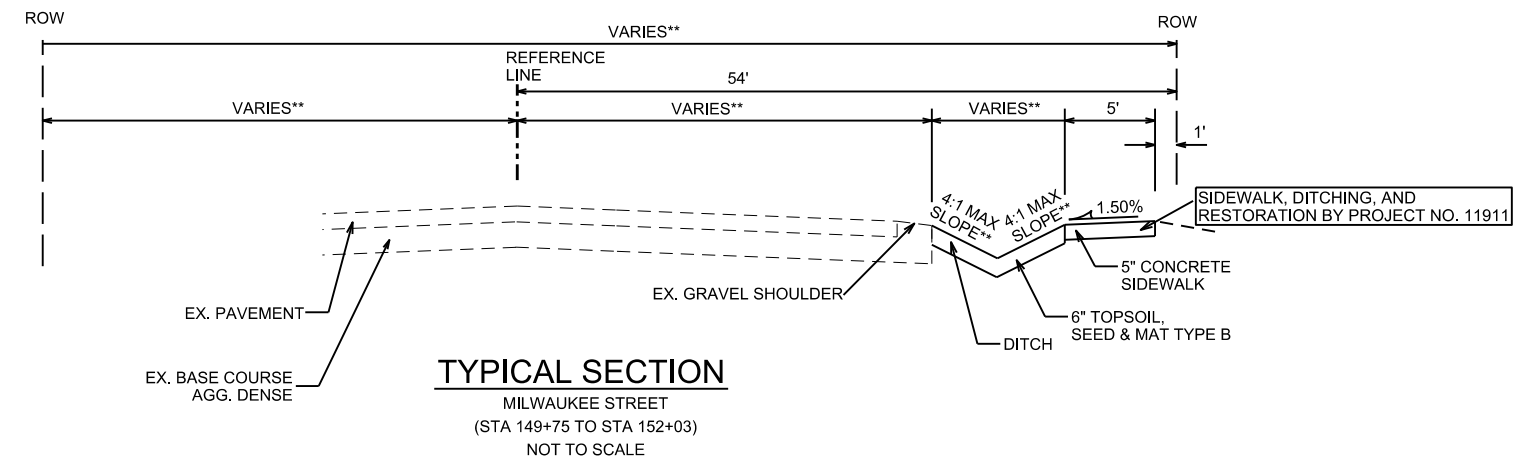
CONVENTIONAL SIGNS	
<i>FIELD VERIFY ALL UTILITY LOCATIONS</i>	
GAS	—— G ——
STORM SEWER	—— ST ——
SANITARY SEWER	—— SAN ——
WATER	—— W ——
OVERHEAD ELECTRIC	—— OH ——
POWER POLE	⊕
ADA COMPLIANT RAMP W/ DETECTABLE WARNING FIELD	
COMBUSTIBLE FLUIDS	

PLOT SCALE:

PLOT NAME:

REV. DATE:

ORIGINATOR: CITY OF MADISON, STREETS DIVISION

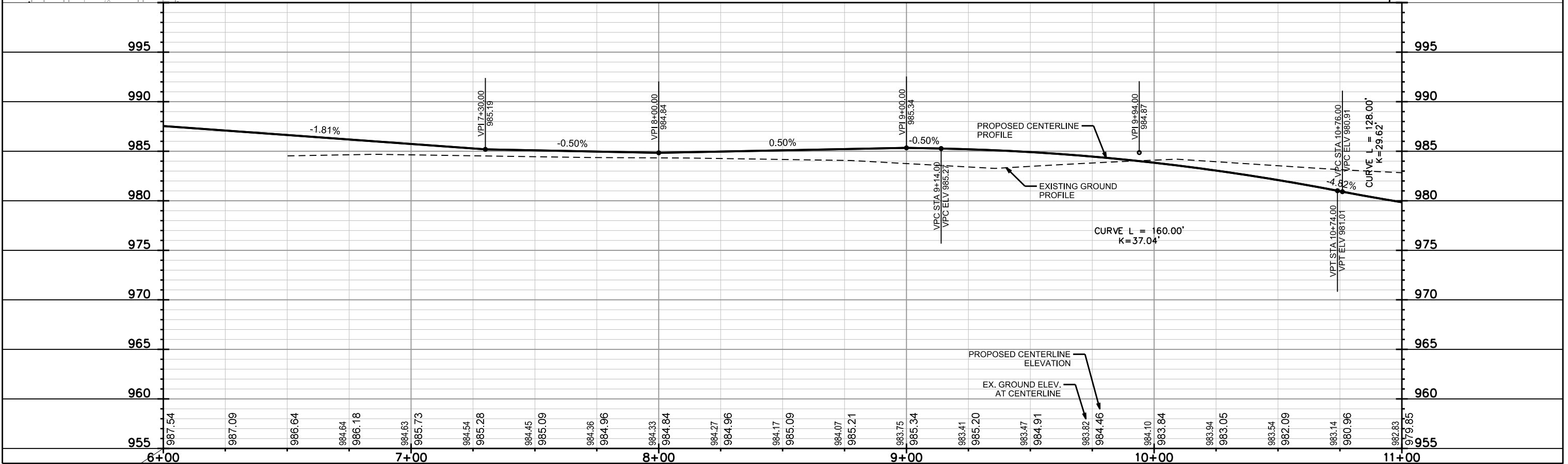
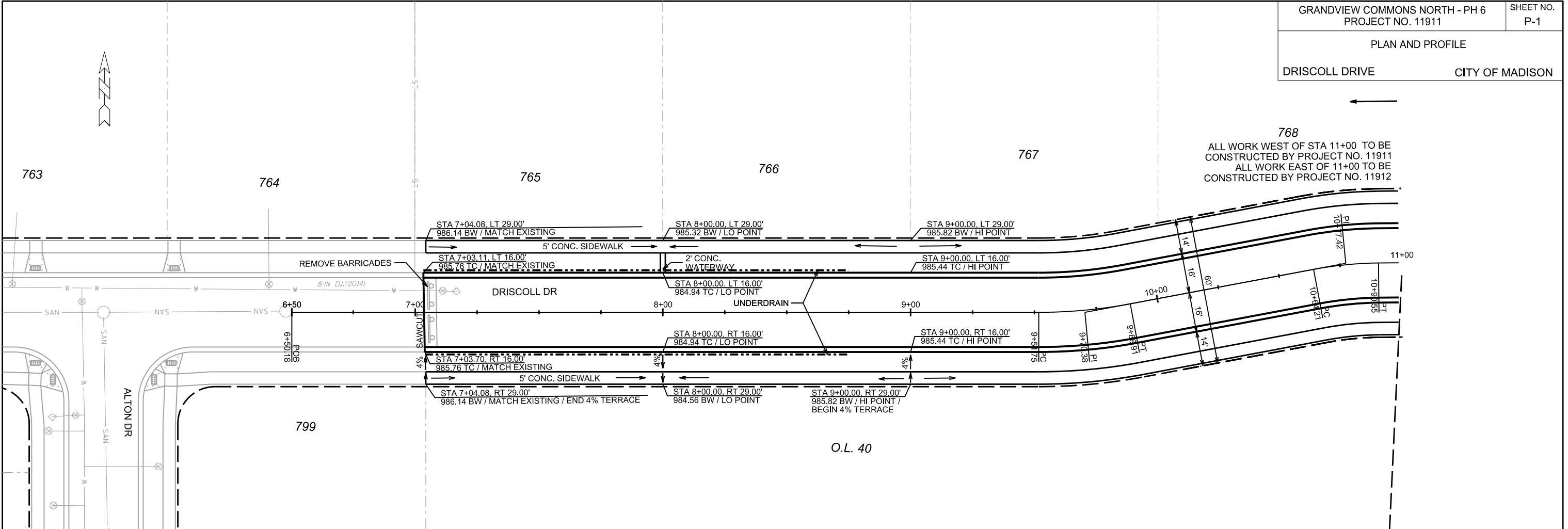


- NOTES:
- \* MILWAUKEE STREET SHALL BE CONSTRUCTED AS TYPE 'C' PAVEMENT PER CITY OF MADISON MINIMUM PAVEMENT DESIGN †
  - † DRISCOLL DRIVE SHALL BE CONSTRUCTED AS TYPE 'A' PAVEMENT PER CITY OF MADISON MINIMUM PAVEMENT DESIGN †
  - \*\* SEE PLAN AND CROSS SECTIONS FOR DETAILS AND DIMENSIONS
  - \*\*\* TERRACE & SIDEWALK CROSS SLOPE VARIES FROM STA 7+00 - 9+00

† CITY OF MADISON MINIMUM PAVEMENT DESIGN

TYPE	CRUSHED AGGREGATE BASE COURSE		ASPHALTIC CONCRETE PAVEMENT LOWER LAYER		ASPHALTIC CONCRETE PAVEMENT UPPER LAYER	
	LOWER LAYER GRADATION 1	UPPER LAYER GRADATION 2	TYPE	THICKNESS	TYPE	THICKNESS
A	6"	6"	4 LT 58-28 S	1.75"	4 LT 58-28 S	1.75"
B	6"	6"	3 LT 58-28 S	2.50"	4 LT 58-28 S	2.00"
C	6"	6"	3 MT 58-28 S/H 3 HT 58-28 H	3.50"	4 MT 58-28 S/H 4 HT 58-28 H	2.00"

PLOT SCALE:  
PLOT NAME:  
REV. DATE:  
ORIGINATOR: CITY OF MADISON, STREET'S DIVISION

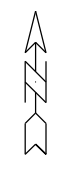


PLOT SCALE:

PLOT NAME:

REV. DATE:

ORIGINATOR: CITY OF MADISON, STREETS DIVISION



0710-022-0099-8  
HOMBURG EQUIPMENT INC  
5622 Milwaukee St

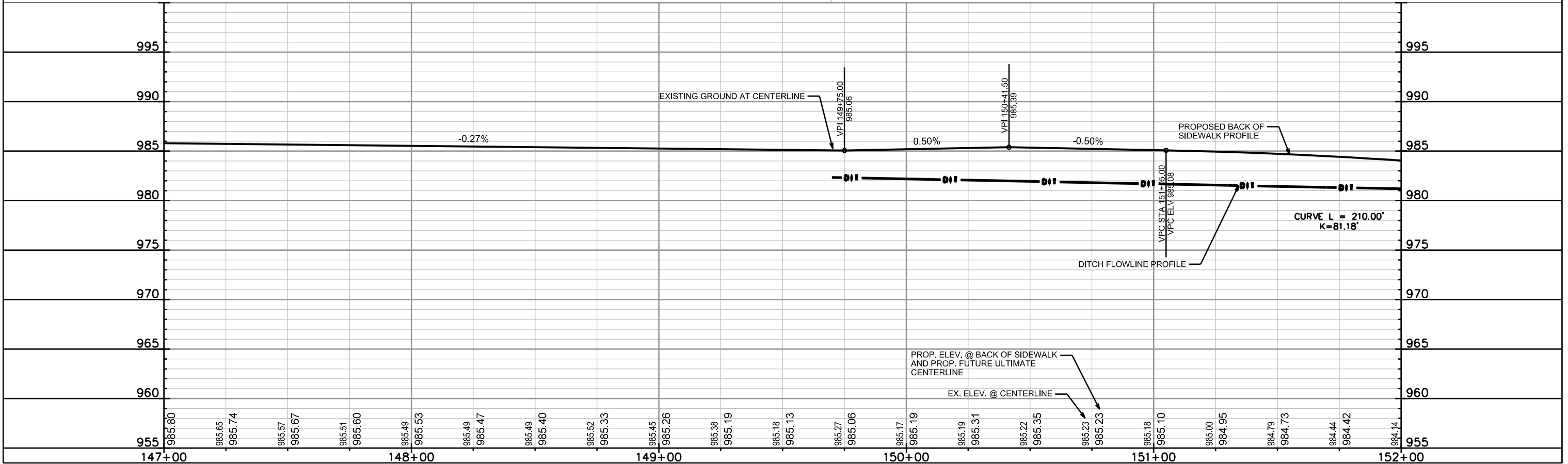
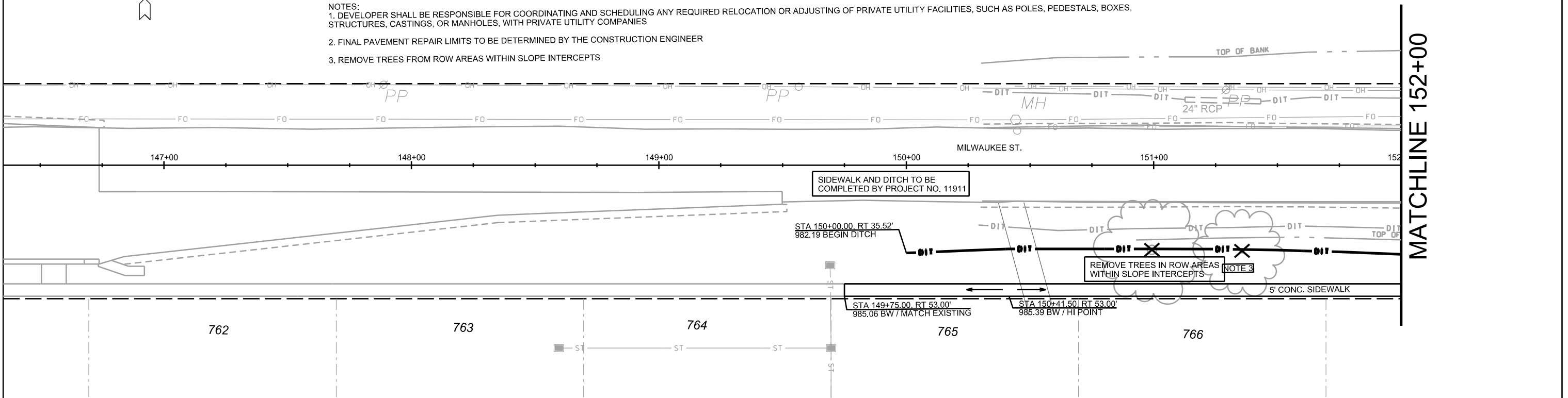
- NOTES:
1. DEVELOPER SHALL BE RESPONSIBLE FOR COORDINATING AND SCHEDULING ANY REQUIRED RELOCATION OR ADJUSTING OF PRIVATE UTILITY FACILITIES, SUCH AS POLES, PEDESTALS, BOXES, STRUCTURES, CASTINGS, OR MANHOLES, WITH PRIVATE UTILITY COMPANIES
  2. FINAL PAVEMENT REPAIR LIMITS TO BE DETERMINED BY THE CONSTRUCTION ENGINEER
  3. REMOVE TREES FROM ROW AREAS WITHIN SLOPE INTERCEPTS

PLOT SCALE: \_\_\_\_\_

PLOT NAME: \_\_\_\_\_

REV. DATE: \_\_\_\_\_

ORIGINATOR: CITY OF MADISON, STREETS DIVISION



PLAN AND PROFILE

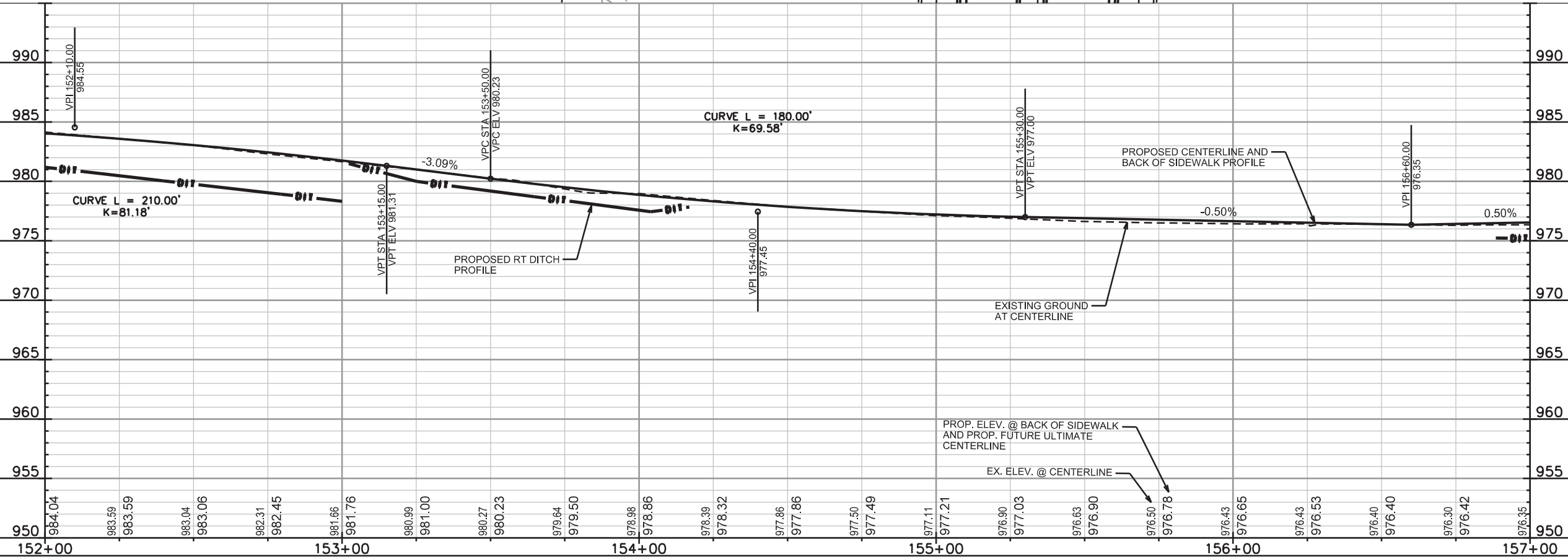
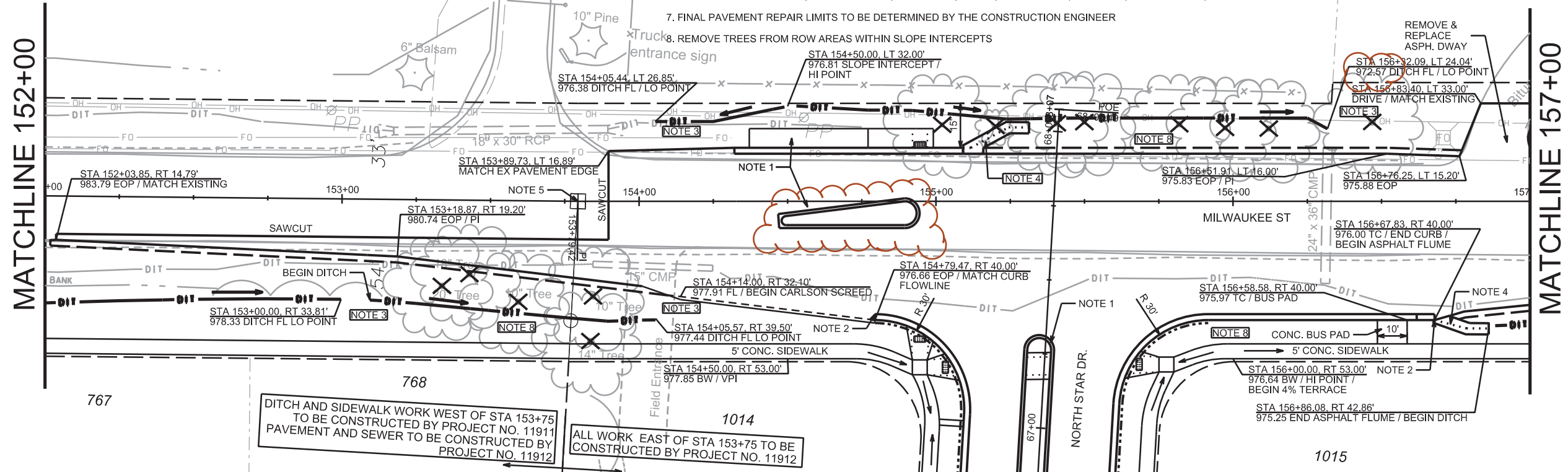
MILWAUKEE ST CITY OF MADISON

REVISED 10/11/18 JPS

REV. NOTES:  
MILWAUKEE ST  
ISLAND MODIFIED.  
CHANGED DITCH  
FLOWLINE LOW  
POINT @ STA 156  
+32.09

- NOTES:
- SEE SHEET D-4 FOR MILWAUKEE ST. BUSPAD, MILWAUKEE ST ISLAND, & NORTH STAR DR. ISLAND
  - TRANSITION CURB HEAD 6" OVER 6'
  - SEE UTILITY SHEETS FOR STORM SEWER DESIGN ON PROJECT NO. 11912 PLAN
  - CURB TO DITCH TRANSITION ASPHALT FLUME PER S.D.D. 5.4.10.
  - CONTRACTOR TO PROTECT MONUMENT/SECTION CORNER THROUGHOUT CONSTRUCTION. C1/4 CORNER SECTION 2,T7N, R10E - FOUND BRASS CAP MONUMENT CITY COORDINATES N:491,812.05 E:849,890.17
  - DEVELOPER SHALL BE RESPONSIBLE FOR COORDINATING AND SCHEDULING ANY REQUIRED RELOCATION OR ADJUSTING OF PRIVATE UTILITY FACILITIES, SUCH AS POLES, PEDESTALS, BOXES, STRUCTURES, CASTINGS, OR MANHOLES, WITH PRIVATE UTILITY COMPANIES
  - FINAL PAVEMENT REPAIR LIMITS TO BE DETERMINED BY THE CONSTRUCTION ENGINEER
  - REMOVE TREES FROM ROW AREAS WITHIN SLOPE INTERCEPTS

0710-022-0098-0  
HOMBURG FARMS LLC  
5800 MILWAUKEE ST



DITCH AND SIDEWALK WORK WEST OF STA 153+75 TO BE CONSTRUCTED BY PROJECT NO. 11911  
PAVEMENT AND SEWER TO BE CONSTRUCTED BY PROJECT NO. 11912

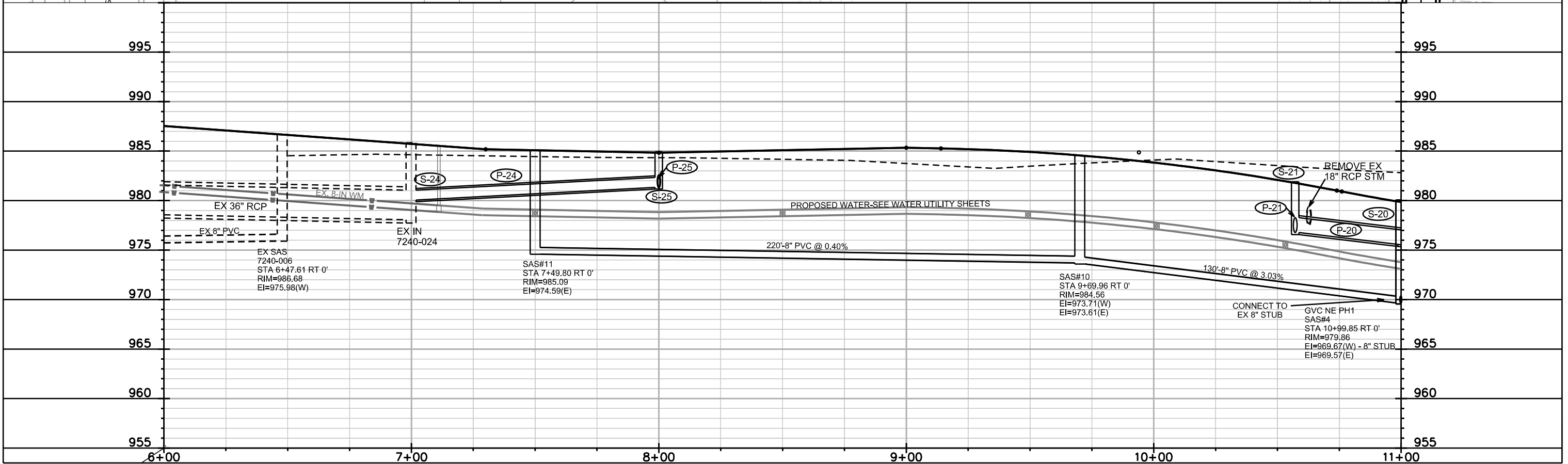
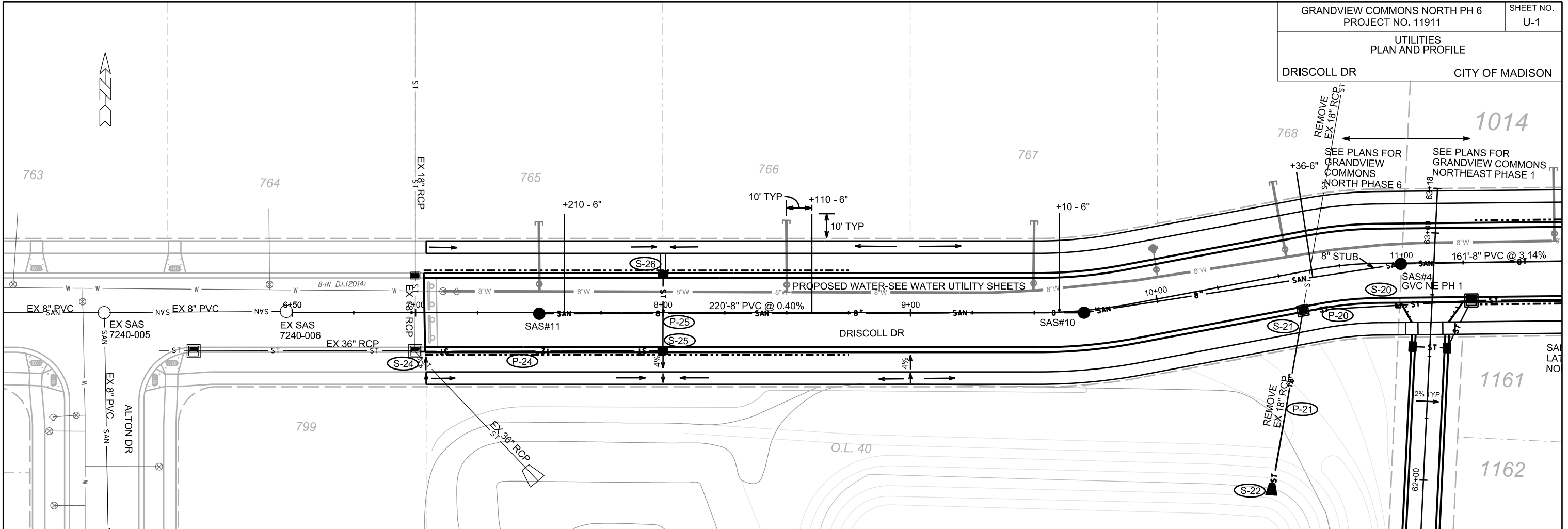
ALL WORK EAST OF STA 153+75 TO BE CONSTRUCTED BY PROJECT NO. 11912

PLOT SCALE: \_\_\_\_\_

PLOT NAME: \_\_\_\_\_

REV. DATE: \_\_\_\_\_

ORIGINATOR: CITY OF MADISON, STREETS DIVISION



PLOT SCALE: \_\_\_\_\_

PLOT NAME: \_\_\_\_\_

REV. DATE: \_\_\_\_\_

ORIGINATOR: CITY OF MADISON, STREETS DIVISION

# SANITARY SEWER SCHEDULE

GRANDVIEW COMMONS NORTH PHASE 6 11911	SHEET NO. U-SAN
SANITARY SEWER SCHEDULE	
CITY OF MADISON	

## PROPOSED SANITARY STRUCTURES

SAS NO.	STATION	LOCATION (OFFSET)	TOP OF CASTING	E.I.	DEPTH	NOTES
<b>DRISCOLL DRIVE</b>						
SAS#10	9+69.96	CL	984.56	973.61	10.95	-
SAS#11	7+49.80	CL	985.09	974.59	10.50	-

## PROPOSED SANITARY PIPES

FROM (DNSTM)	TO (UPSTM)	DWNSTRM E.I.	UPSTRM E.I.	PLAN LGTH (FT)	SLOPE (%)	PIPE SIZE	PVC TYPE	NOTES
SAS#4 (GVC NE Ph1)	SAS#10	969.67	973.61	130	3.03%	8"	SDR-35	-
SAS#10	SAS#11	973.71	974.59	220	0.40%	8"	SDR-35	-



# STORM SEWER SCHEDULE

GRANDVIEW COMMONS NORTH PH 6  
PROJECT NO. 11911

SHEET NO.  
U-STM

STORM SEWER SCHEDULE

CITY OF MADISON

## PROPOSED STORM STRUCTURES

STRUC. NO.	STATION	LOCATION (OFFSET)	TYPE	TOP OF CASTING	E.I.	DEPTH	NOTES
<b>DRISCOLL DRIVE</b>							
S-20	10+98.66	RT-17.05	PIPE END	-	975.58	-	-
S-21	10+57.14	RT-15.50	3X3 SAS	981.89	976.77	5.12	W/ R-3067-7004-V
S-22	10+30.69	RT-86.56	18" RCP APRON END	-	978.00	-	W/ GATE
S-24			STORM TAP	-	980.06	-	
S-25	8+00.00	RT-15.50	H INLET	984.94	981.34	3.60	LP; W/ R-3067-7004-VB
S-26	8+00.00	LT-15.50	H INLET	984.94	981.54	3.40	LP; W/ R-3067-7004-VB

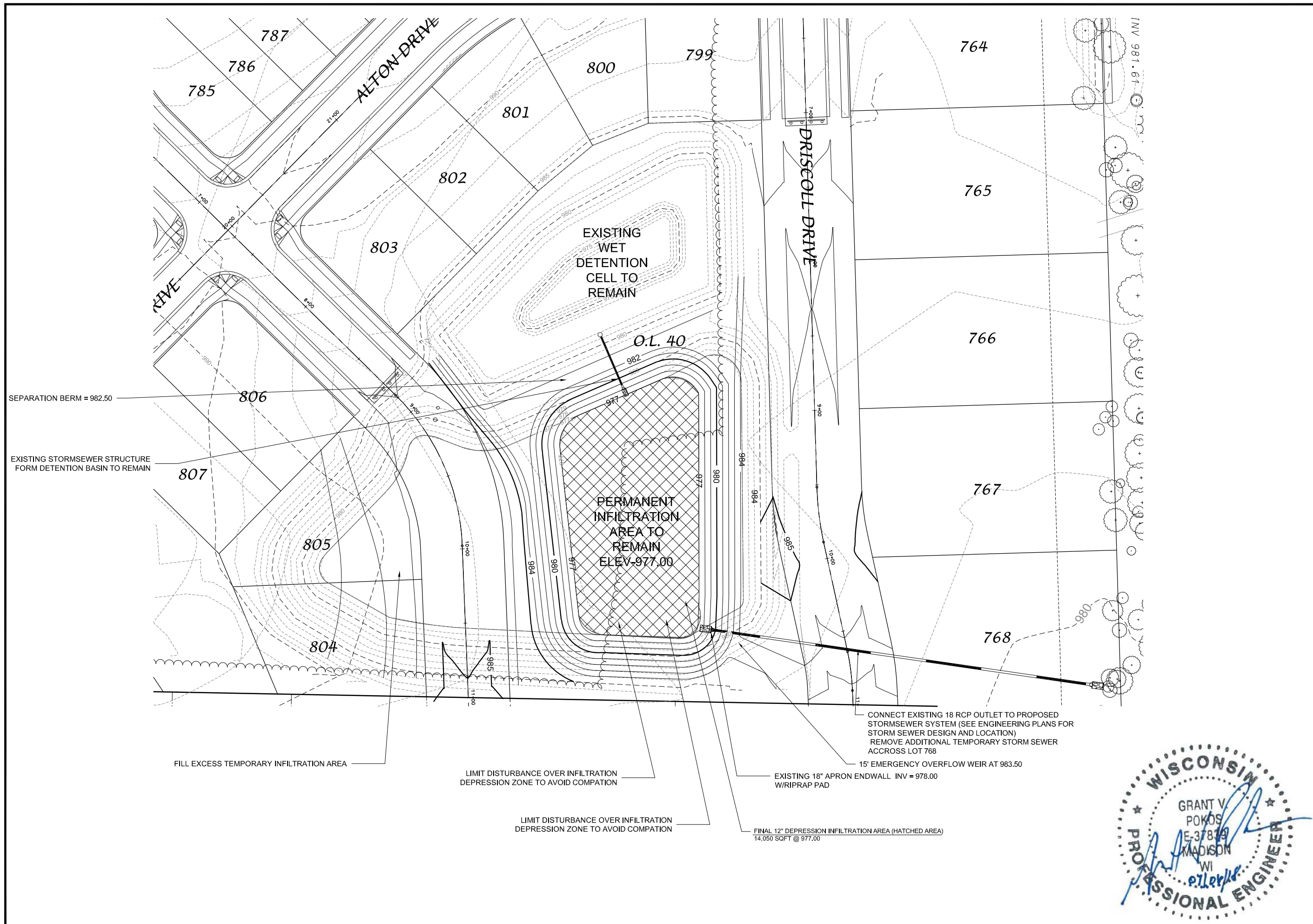
## PROPOSED STORM PIPES

PIPE NO.	FROM (DNSTM)	TO (UPSTM)	DISCH. E.I.	INLET E.I.	PLAN (PAY) LGTH (FT)	PIPE LGTH (FT)	SLOPE (%)	PIPE SIZE	TYPE	NOTES
P-20	S-20	S-21	975.58	976.77	39	37	3.05%	18"	TYPE II	-
P-21	S-21	S-22	976.77	978.00	76	74	1.62%	18"	TYPE II	-
P-24	S-24	S-25	980.06	981.34	100	97	1.28%	12"	TYPE II	-
P-25	S-25	S-26	981.34	981.54	31	29	0.65%	12"	TYPE I	-

## SPECIFIC NOTES

## STANDARD NOTES:

- ABBREVIATIONS: AE = APRON ENDWALL; RCP = REINFORCED CONCRETE PIPE; HERCP = HORIZONTAL ELLIPTICAL REINFORCED CONCRETE PIPE; DNA = DOES NOT APPLY; SAS = SEWER ACCESS STRUCTURE; LP = LOW POINT INLET STRUCTURE; FP = FIELD POURED STRUCTURE; TR = TOP OF CONCRETE ROOF; NCM = NO CROWN MATCH FOR PIPES; UD = UNDERDRAIN
- APPROXIMATE DISCHARGE E.I. GIVEN, ADJUST E.I. AND PIPE SLOPE IN THE FIELD.
- TOP OF CASTING GRADE GIVEN IS THE TOP OF CURB FOR INLET STRUCTURES AND THE FLOWLINE OF THE CLOSED CASTING FOR SAS's.
- TOP OF CONCRETE ROOF (TR) IS 1.25' BELOW TOP OF CASTING UNLESS OTHERWISE NOTED.
- ALL REINFORCED CONCRETE PIPES TO BE CLASS III UNLESS OTHERWISE NOTED.
- SURVEYOR TO CONFIRM THAT ALL INLET STATION / OFFSETS LINE UP WITH PROPOSED CURB AND GUTTER.
- ALL STRUCTURES CALLED OUT AS FIELD POURED SHALL BE FIELD POURED. ALL OTHER STRUCTURES (NOT INDICATED AS FIELD POURED) SHALL BE SUBMITTED TO CITY ENGINEERING FOR APPROVAL IF PRECAST STRUCTURES ARE PREFERRED. CONTACT ELIA E. ACOSTA OF CITY ENGINEERING AT (608) 266-4096 FOR PRECAST APPROVALS, FAX SHOP DRAWINGS TO (608)264-9275, OR EMAIL SHOP DRAWINGS TO EACOSTA@CITYOFMADISON.COM.



**D'ONOFRIO KOTTKE AND ASSOCIATES, INC.**  
 7530 Westward Way, Madison, WI 53717  
 Phone: 608.833.7530 • Fax: 608.833.1089  
 YOUR NATURAL RESOURCE FOR LAND DEVELOPMENT

PHASE 6 - OL 40 PROPOSED INFILTRATION BASIN GRADING

**GRANDVIEW COMMONS NORTH ADDITION**

CITY OF MADISON, DAINE COUNTY, WI

0 30

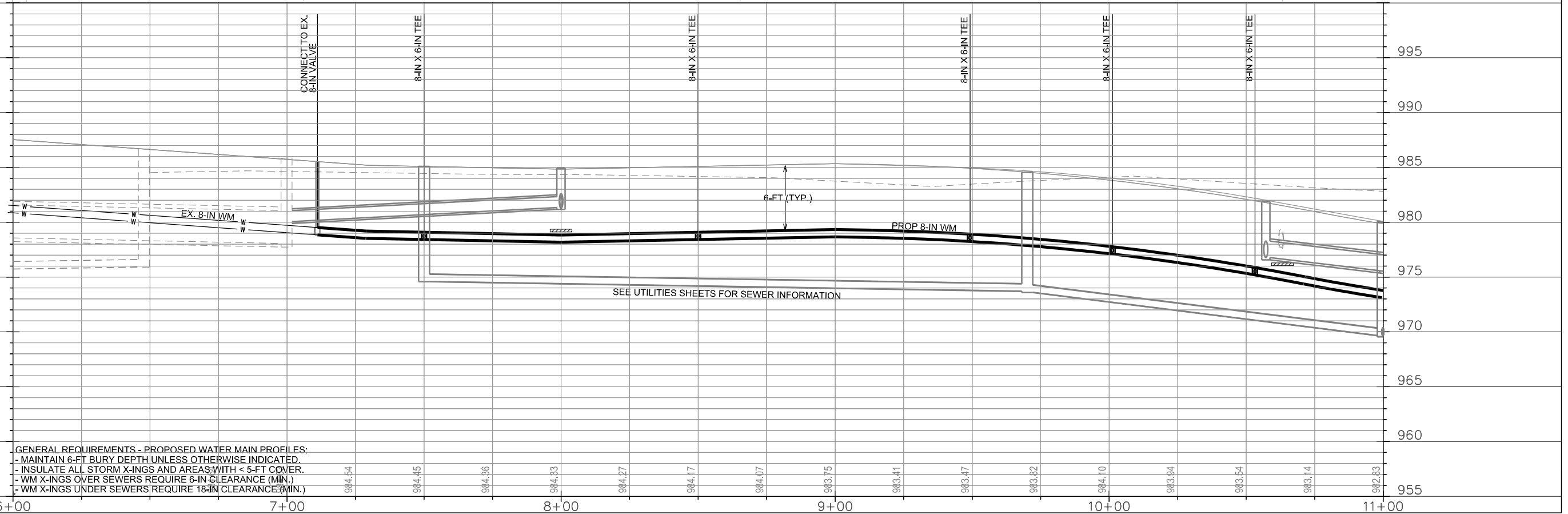
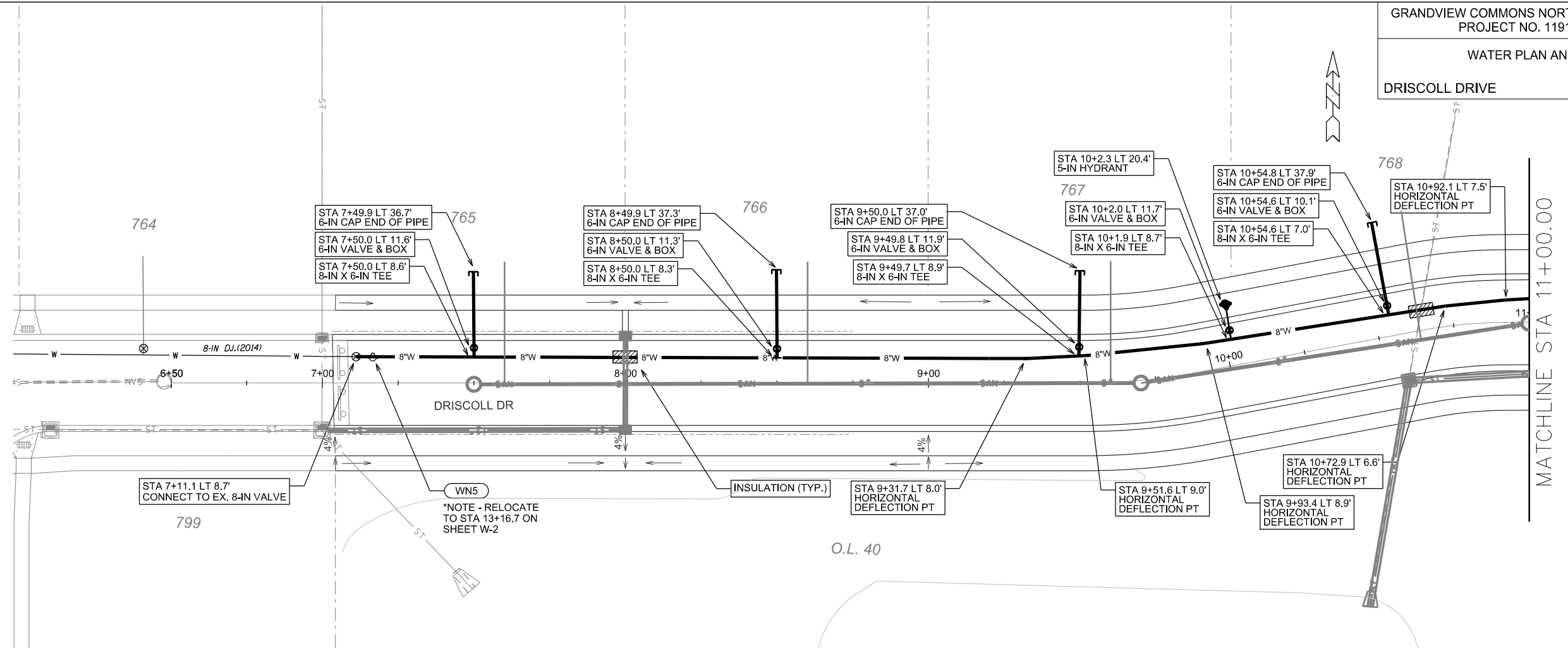
DATE: 07-06-18  
 REVISED:

DRAWN BY: GVP

FN: 12-05-121

Sheet Number:  
 1 OF 1





GENERAL REQUIREMENTS - PROPOSED WATER MAIN PROFILES:  
 - MAINTAIN 6-FT BURY DEPTH UNLESS OTHERWISE INDICATED.  
 - INSULATE ALL STORM X-INGS AND AREAS WITH < 5-FT COVER.  
 - WM X-INGS OVER SEWERS REQUIRE 6-IN CLEARANCE (MIN.)  
 - WM X-INGS UNDER SEWERS REQUIRE 18-IN CLEARANCE (MIN.)

PLOT SCALE: \_\_\_\_\_  
 PLOT NAME: \_\_\_\_\_  
 REV. DATE: \_\_\_\_\_  
 ORIGINATOR: CITY OF MADISON, STREETS DIVISION

**CONSTRUCTION NOTES:**

1. CONSTRUCT NEW WATER MAIN 6.0' BELOW FINISHED GRADE, UNLESS OTHERWISE NOTED. INSULATE MAIN WITH POLYSTYRENE BOARD AT UTILITY CROSSINGS OR OTHER AREAS IDENTIFIED BY ENGINEER AS HAVING INADEQUATE COVER.
2. VERIFY SIZE OF EXISTING WATER SERVICES AND RECONNECT SERVICES AS INDICATED.
3. MINIMIZE DISRUPTION OF SERVICE TO EXISTING CUSTOMERS. NOTIFY PER CONTRACT REQUIREMENTS OF ANY PLANNED WATER OUTAGE.
4. THE EXISTING UTILITIES SHOWN ON THIS PLAN REPRESENT THE BEST INFORMATION AVAILABLE TO THE WATER UTILITY AT THE TIME OF PLAN PREPARATION. CONTRACTOR IS RESPONSIBLE FOR HAVING EACH UTILITY LOCATED PRIOR TO COMMENCING WORK.

- WN1 REPLACE THE EXISTING LEAD SERVICE WITH A NEW COPPER SERVICE.
- WN2 EXTEND AND RECONNECT THE EXISTING COPPER SERVICE TO THE NEW WATER MAIN.
- WN3 EXISTING SERVICE TO BE ABANDONED WHEN THE WATER MAIN IS CUT OFF.
- WN4 DISCONNECT FROM THE OLD WATER MAIN AND RECONNECT THE EXISTING COPPER WATER SERVICE LATERAL TO THE NEW WATER MAIN.
- WN5 RELOCATE THE EXISTING FIRE HYDRANT.
- WN6 ABANDON WATER VALVE ACCESS STRUCTURE.
- WN7 FURNISH AND INSTALL THE NEW TOP SECTION FOR THE WATER ACCESS STRUCTURE.
- WN8 ABANDON THE VALVE BOX.
- WN9 FURNISH THE DITCH, COMPACTION, AND ALL MATERIALS AND LABOR FOR THE INSTALLATION OF NEW SERVICE LATERAL.
- WN10 REMOVE AND SALVAGE EXISTING HYDRANT
- WN11 REPLACE THE EXISTING COPPER SERVICE WITH A COPPER SERVICE
- WN20+ SEE WATER IMPACT PLAN FOR CONNECTION POINT ISOLATION AND WATER SHUT-OFF NOTIFICATION INFORMATION.

**ESTIMATE OF MATERIALS SUPPLIED BY CONTRACTOR:**

*\* ESTIMATE OF MATERIALS IS FOR INFORMATION ONLY. ENGINEER DOES NOT GUARANTEE ACCURACY OF MATERIAL TAKE-OFF.*

490-FT - 6-IN PIPE	1 - 8-IN MJ PLUG
2340-FT - 8-IN PIPE	13 - 6-IN MJ CAP
	1 - 8-IN MJ CAP
18 - 6-IN VALVE & BOX	6 - 5-IN HYDRANT
8 - 8-IN VALVE & BOX	
19 - 8-IN X 6-IN TEE	256-FT - 2-IN STYROFOAM INSULATION
3 - 8-IN X 8-IN TEE	3250-FT - POLY WRAP
2 - 8-IN 45° BEND	1-IN TO 2-IN COPPER (AS REQ'D)
1 - 8-IN X 6-IN REDUCER	

**MATERIALS SUPPLIED BY CITY:**

*\* ESTIMATE OF MATERIALS IS FOR INFORMATION ONLY. ENGINEER DOES NOT GUARANTEE ACCURACY OF MATERIAL TAKE-OFF.*

NONE

**ESTIMATE OF MATERIALS REUSED:**

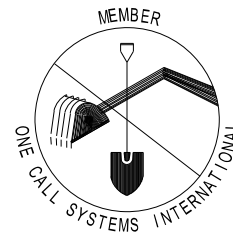
*\* ESTIMATE OF MATERIALS IS FOR INFORMATION ONLY. ENGINEER DOES NOT GUARANTEE ACCURACY OF MATERIAL TAKE-OFF.*

1 - 5-IN HYDRANT

TO OBTAIN LOCATION OF PARTICIPANTS' UNDERGROUND FACILITIES BEFORE YOU DIG IN WISCONSIN

CALL DIGGERS HOTLINE  
TOLL FREE  
811 OR 1-800-242-8511  
FAX-A-LOCATE 1-800-338-3860  
TDD (FOR HEARING IMPAIRED) 1-800-542-2289

WIS. STATUTE 182.0175 (1974)  
REQUIRES MIN. OF 3 WORK DAYS  
NOTICE BEFORE YOU EXCAVATE.

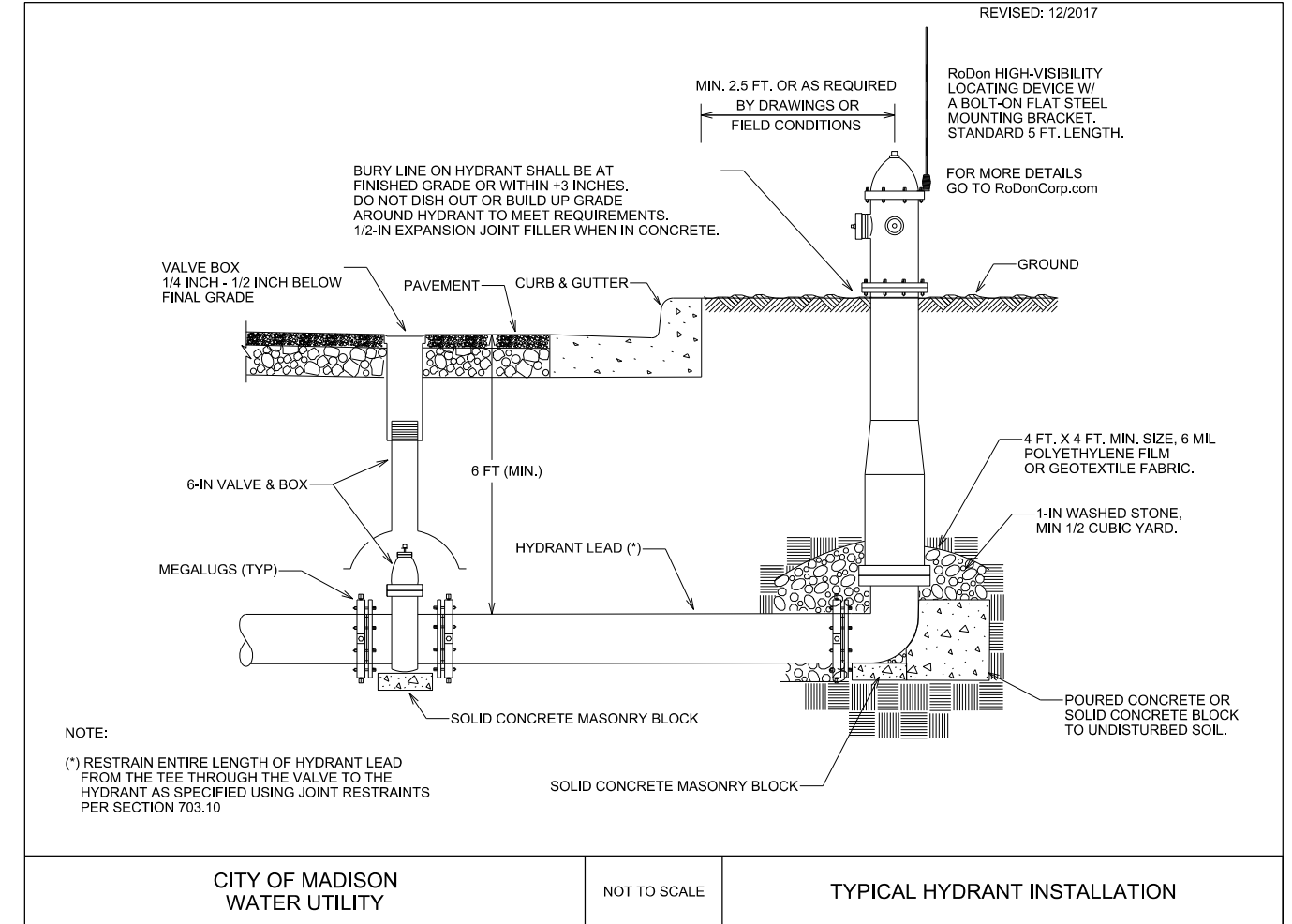


**DISCLAIMER NOTE:**  
UTILITY LOCATIONS SHOWN ARE APPROXIMATE ONLY. IT SHALL BE THE CONTRACTOR'S RESPONSIBILITY TO DETERMINE THE EXACT HORIZONTAL AND VERTICAL LOCATION OF ALL EXISTING UNDERGROUND AND OVERHEAD UTILITIES PRIOR TO COMMENCING WORK.

**PART VII - WATER MAINS AND SERVICE LATERALS**

**DETAIL DRAWING NO. 7.04**

REVISED: 12/2017



CITY OF MADISON  
WATER UTILITY

NOT TO SCALE

TYPICAL HYDRANT INSTALLATION

City of Madison Standard Specifications for Public Works Construction

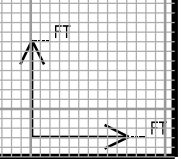
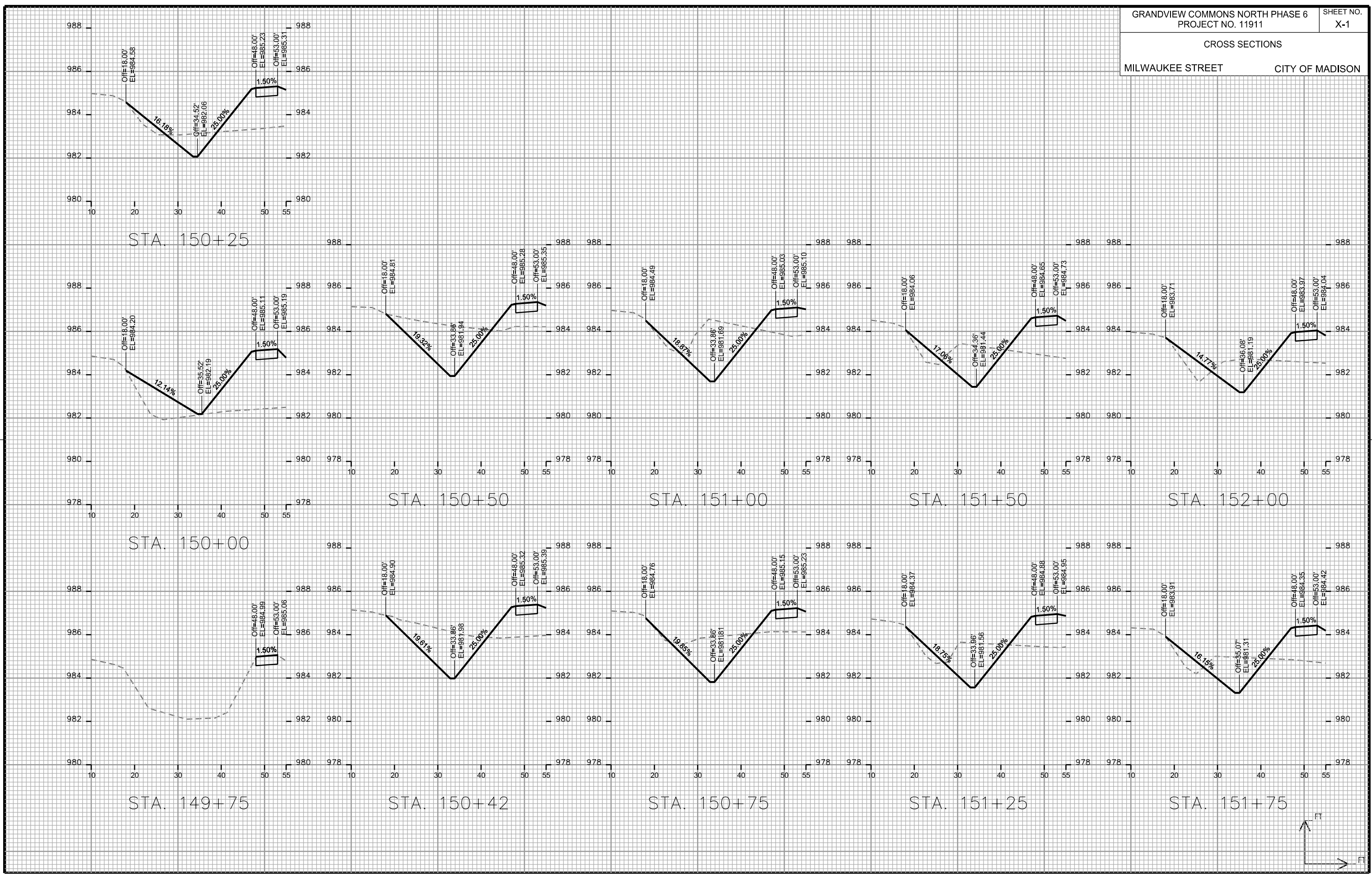
CROSS SECTIONS  
MILWAUKEE STREET CITY OF MADISON

PLOT SCALE: \_\_\_\_\_

PLOT NAME: \_\_\_\_\_

REV. DATE: \_\_\_\_\_

ORIGINATOR: CITY OF MADISON - STREETS DIVISION



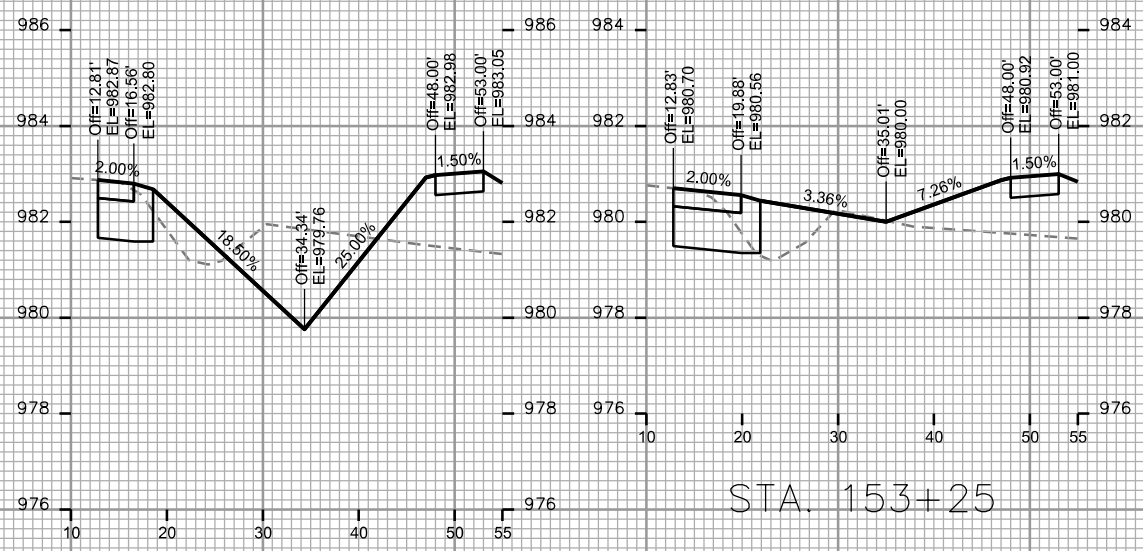
CROSS SECTIONS  
MILWAUKEE STREET CITY OF MADISON

PLOT SCALE: \_\_\_\_\_

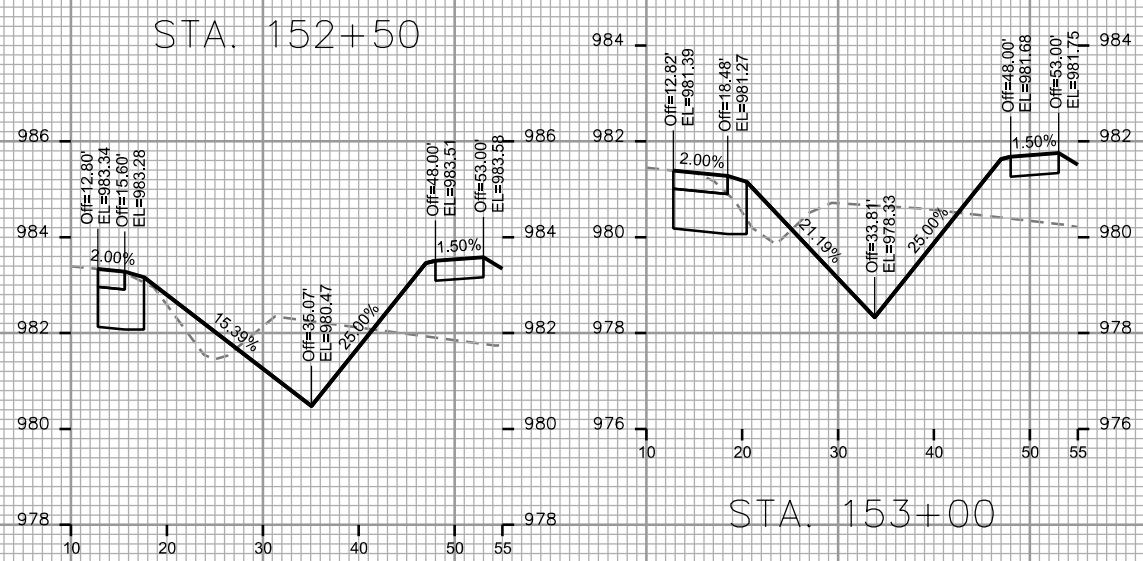
PLOT NAME: \_\_\_\_\_

REV. DATE: \_\_\_\_\_

ORIGINATOR: CITY OF MADISON STREETS DIVISION



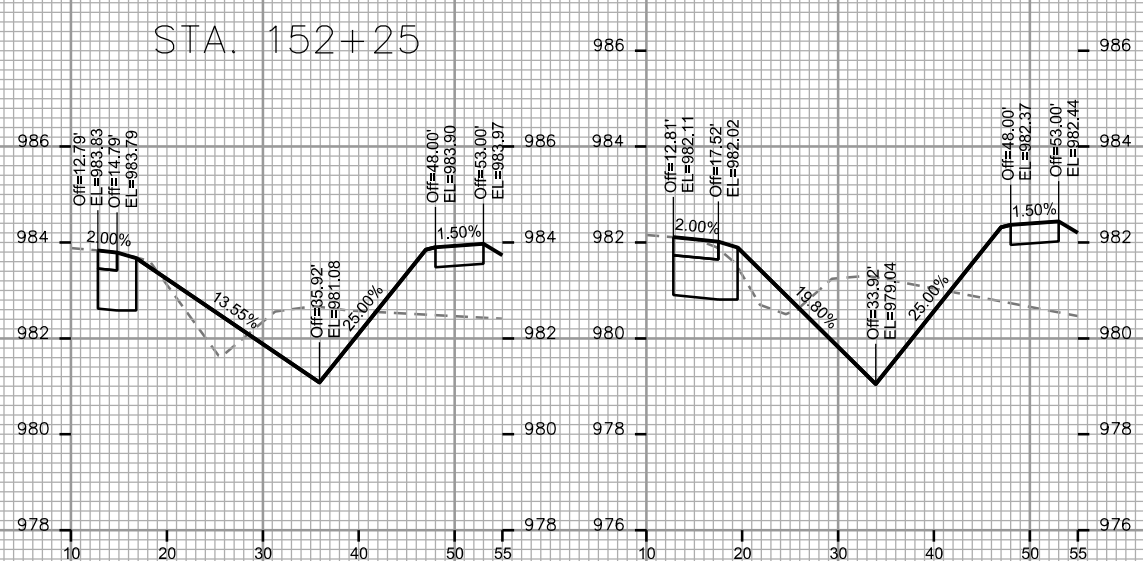
STA. 153+25



STA. 152+50

STA. 153+00

STA. 153+75



STA. 152+25

STA. 152+75

STA. 153+50

