

CITY OF MADISON

CITY ENGINEERING DIVISION

DEPARTMENT OF PUBLIC WORKS

PLAN OF PROPOSED IMPROVEMENT

PUBLIC IMPROVEMENT PROJECT
APPROVED

NOVEMBER 30, 2010

BY THE COMMON COUNCIL
OF MADISON, WISCONSIN

PUBLIC IMPROVEMENT DESIGN
APPROVED BY:

 8/8/14
City Engineer Date

LAKEFRONT WALK
DESIGNED BY:

SEE STAMPED SHEETS



INDEX OF SHEETS

SHEET	FIGURE	TITLE
1	1	LAKE FRONT WALK PLAN AND PROFILE
2-4	2-4	LAKE FRONT WALK CROSS SECTIONS
5	5	LAKE FRONT WALK DETAILS
SI	SI	LAKE FRONT WALK GRADE BEAMS
AI-A4	AI-A4	LAKE FRONT WALK RAMP PLAN AND RAILING DETAILS

EDGEWATER REDEVELOPMENT LAKEFRONT WALKWAY ONLY

CITY PROJECT NO. 53B2241

CONTRACT NO. 2241

CONVENTIONAL SIGNS	
FIELD VERIFY ALL UTILITY LOCATIONS	
GAS	— G —
STORM SEWER	— ST —
SANITARY SEWER	— SAN —
WATER	— W —
OVERHEAD ELECTRIC	— OH —
POWER POLE	⊕
ADA COMPLIANT RAMP W/ DETECTABLE WARNING FIELD	
COMBUSTIBLE FLUIDS	

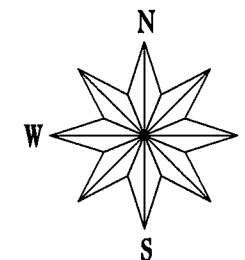
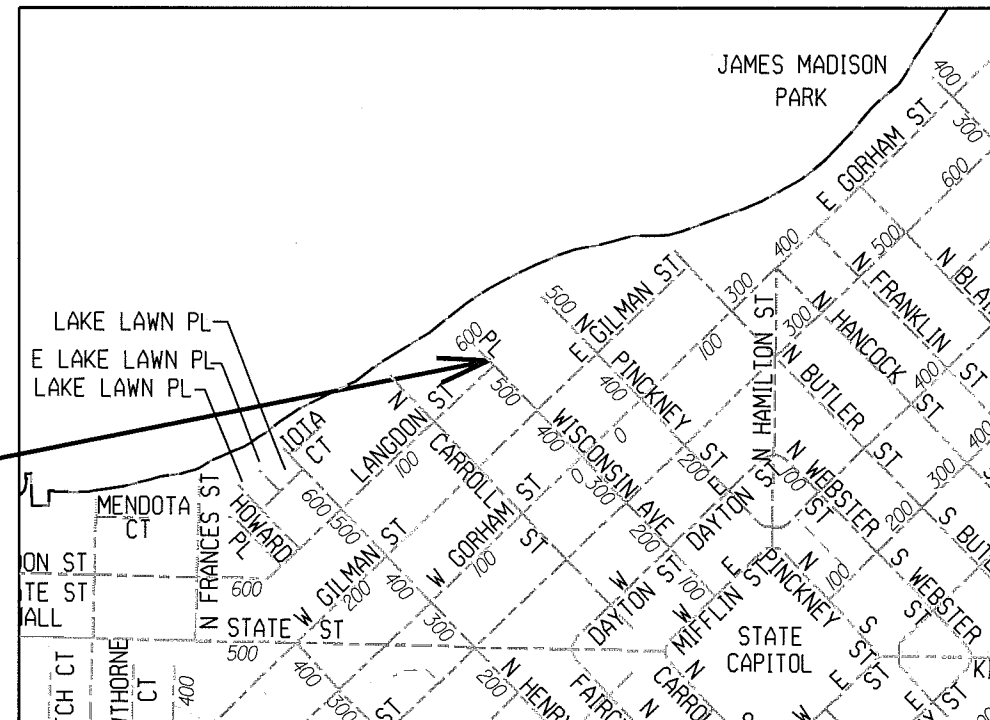
CONSTRUCTION PROJECT LOCATION

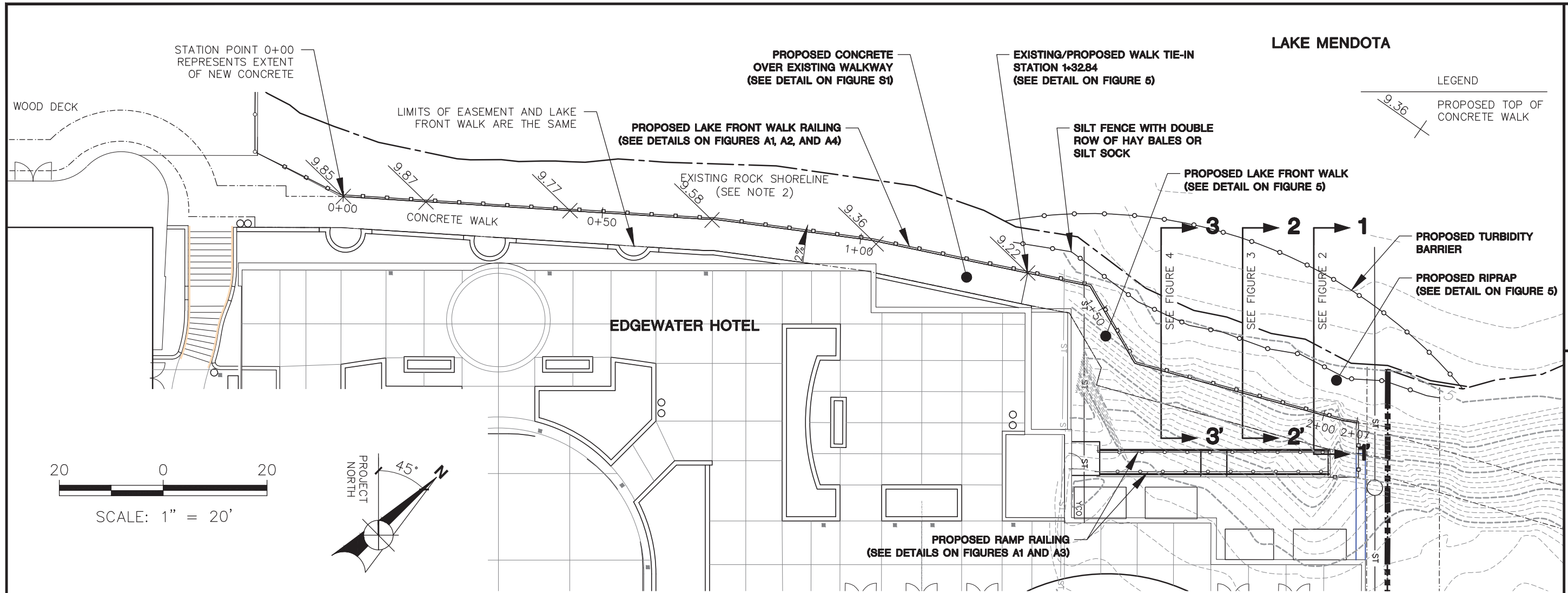
NOTES:

ALL GUTTERS SHALL DRAIN WITH A MINIMUM GRADE
OF 0.50% TOWARD STORM SEWER INLETS.

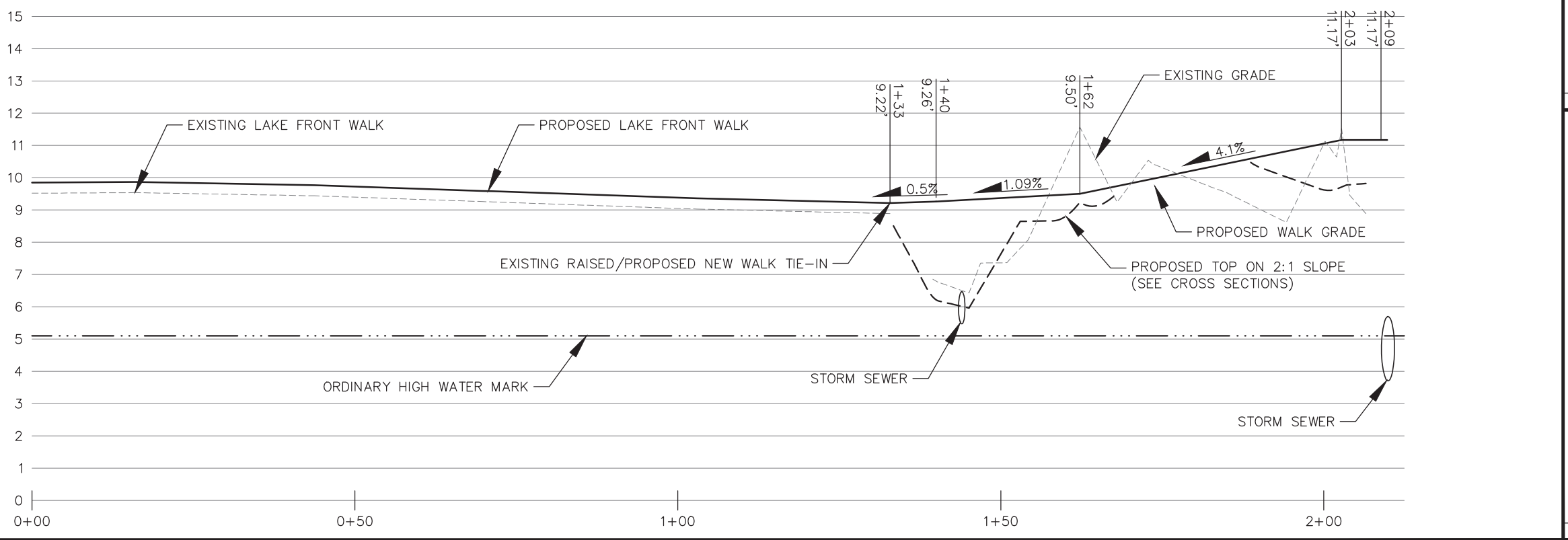
SIDEWALK RAMPS AND CURB THRU SIDEWALK RAMPS
SHALL HAVE A MAXIMUM SLOPE OF 1" PER
12". SIDEWALK AND CURB RAMPS SHALL BE
CONSTRUCTED WITH A SIDE SLOPE OF 2.00%.

SIDEWALK SHALL HAVE A MINIMUM LONGITUDINAL
SLOPE OF 0.50% AND A MAXIMUM LONGITUDINAL
SLOPE OF 5.00% EXCEPT WHERE STREET GRADES
EXCEED 5.00%.

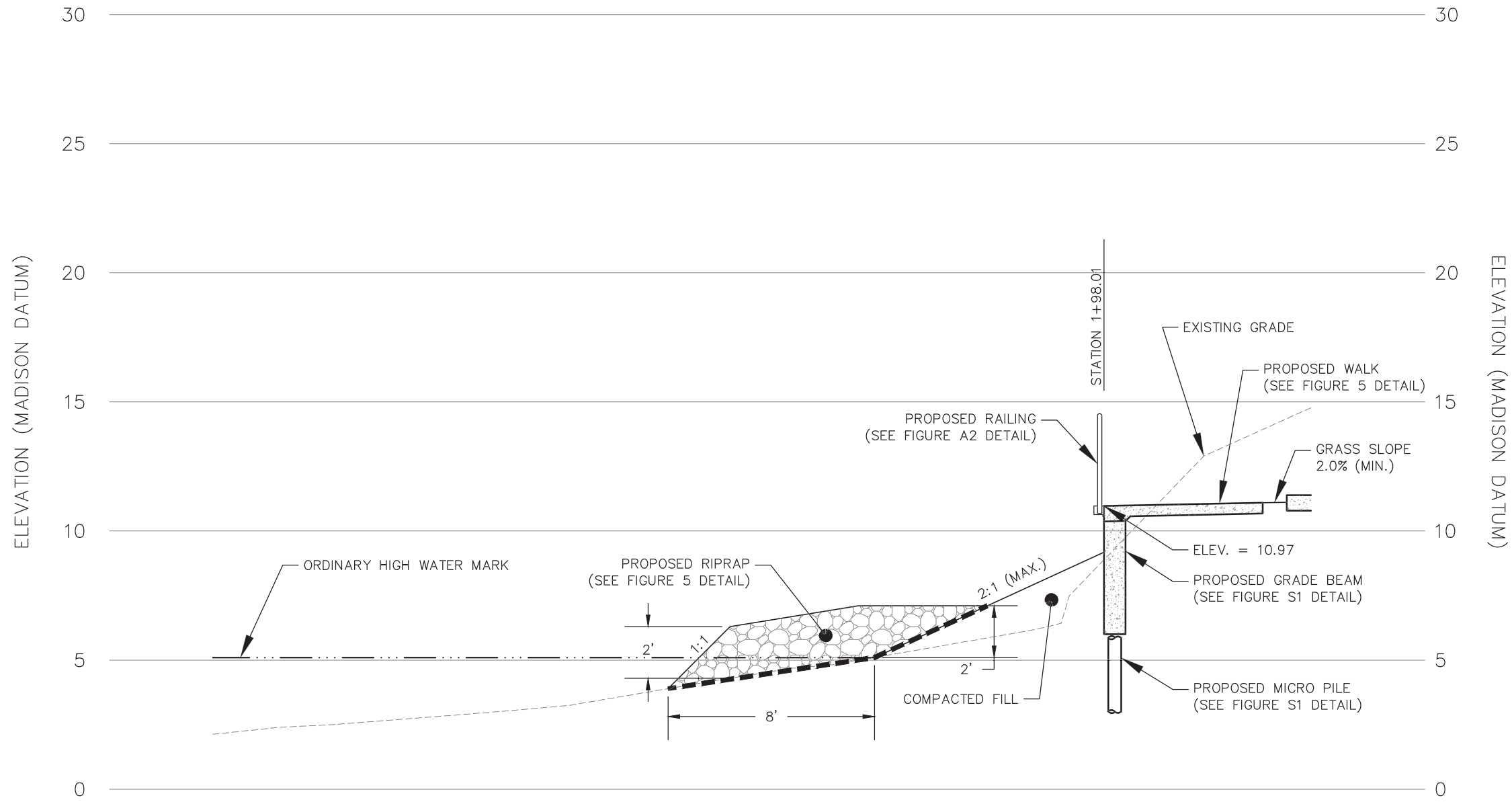




- NOTES:
- REFER TO FIGURE S1 FOR GRADE BEAM AND MICRO PILE LAYOUT AND DETAILS ALONG LAKE FRONT WALK.
 - REPAIR ROCK SHORELINE WITH 6 TO 24-INCH DIAMETER RIPRAP PER DETAIL ON FIGURE 5.
 - INSTALL SILT FENCE WITH DOUBLE ROW OF HAY BALES OR SILT SOCK ABOVE NEW RIPRAP ALONG NEW WALK DURING LAKE SHORE GRADING ACTIVITIES.
 - EDGEWATER HOTEL COMPANY, LLC. TO MODIFY SIDEWALK EASEMENT BASED ON PROPOSED LAYOUT.



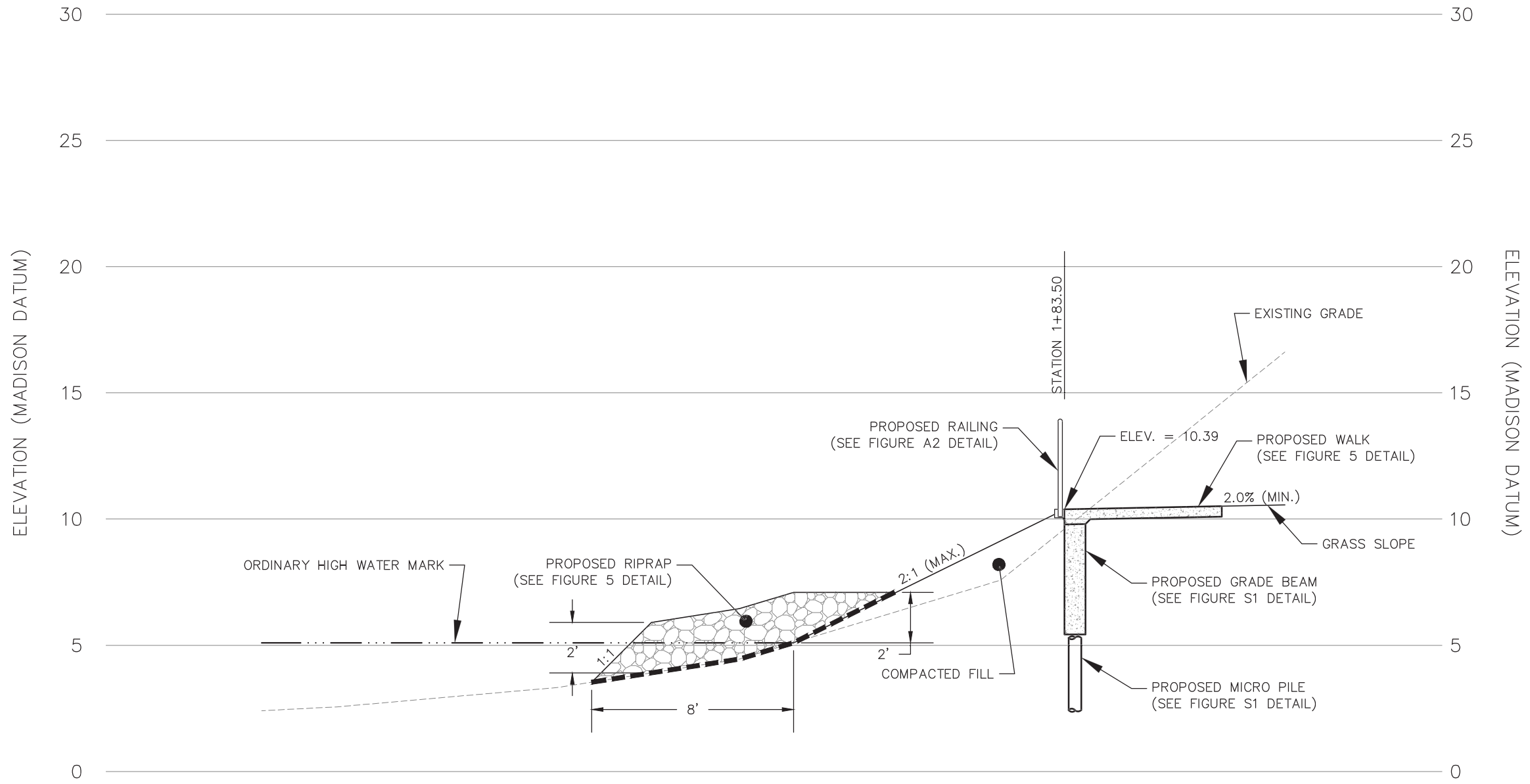
CLIENT	EDGEWATER HOTEL, LLC 22 EAST MIFFLIN STREET, SUITE 800 MADISON, WI 53703	PROJECT NO.	25212056.10	DRAWN BY:	KP	ENGINEER	SCS ENGINEERS 2830 DAIRY DRIVE MADISON, WI 53718-6751 PHONE: (608) 224-2830	FIGURE	1
SITE	THE EDGEWATER 666 WISCONSIN AVENUE MADISON, WISCONSIN	DRAWN BY:	12/02/14	CHECKED BY:	BP	ENGINEER			
		APPROVED BY:	08/01/14						



CROSS SECTION 1-1' (STATION 1+98.01)
SCALE: 1" = 5'



CLIENT	EDgewater HOTEL, LLC 22 EAST MIFFLIN STREET, SUITE 800 MADISON, WI 53703	PROJECT NO.	25212056.10	ENGINEER	SCS ENGINEERS 2830 DAIRY DRIVE MADISON, WI 53718-6751 PHONE: (608) 224-2830	LAKE FRONT WALK CROSS SECTION 1	FIGURE	2	
	DRAWN BY:	12/02/14	CHECKED BY:	KP			THE EDGEWATER 666 WISCONSIN AVENUE MADISON, WISCONSIN		
DRAWN:	07/18/14	APPROVED BY:	BP						
REVISED:									

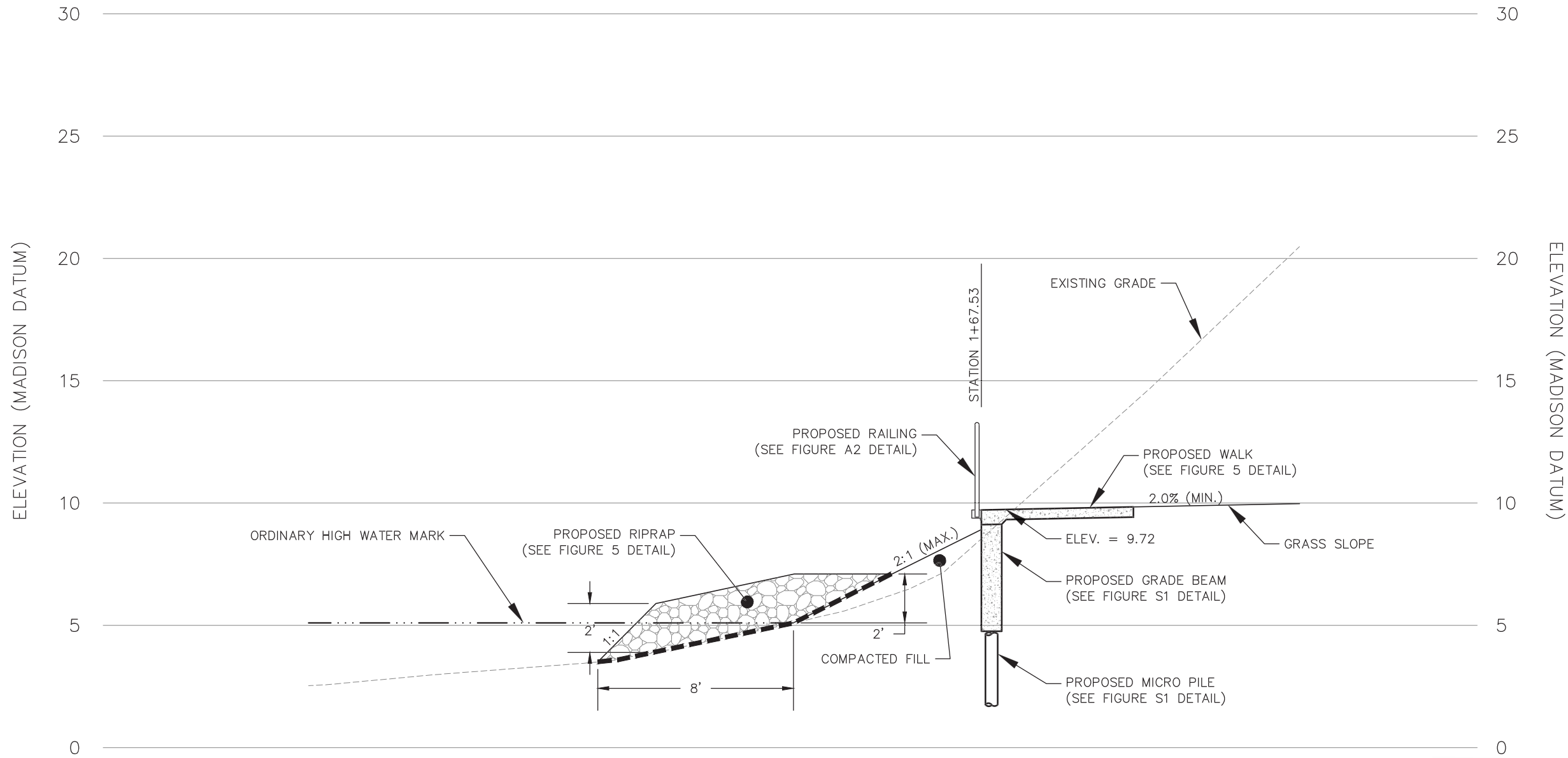


CROSS SECTION 2-2' (STATION 1+83.80)

SCALE: 1" = 5'



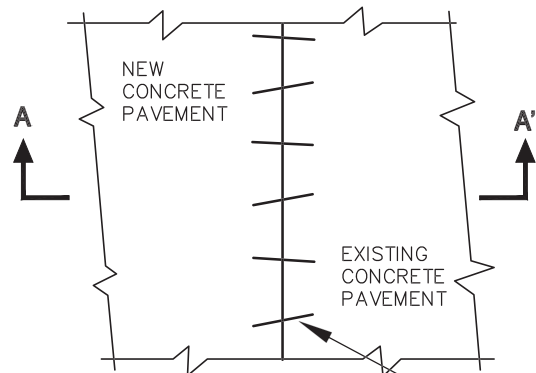
CLIENT	EDGEWATER HOTEL, LLC 22 EAST MIFFLIN STREET, SUITE 800 MADISON, WI 53703	PROJECT NO.	25212056.10	ENGINEER	SCS ENGINEERS 2830 DAIRY DRIVE MADISON, WI 53718-6751 PHONE: (608) 224-2830	LAKE FRONT WALK CROSS SECTION 2	FIGURE 3
SITE	THE EDGEWATER 666 WISCONSIN AVENUE MADISON, WISCONSIN	DRAWN BY:	KP	ENGINEER			
		CHECKED BY:	BP				
		APPROVED BY:					



CROSS SECTION 3-3' (STATION 1+67.53)
SCALE: 1" = 5'

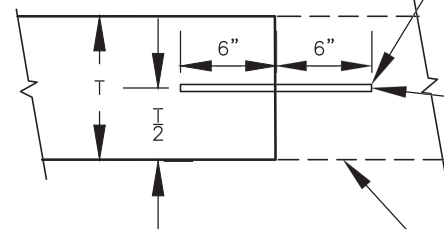


CLIENT	EDGEWATER HOTEL, LLC 22 EAST MIFFLIN STREET, SUITE 800 MADISON, WI 53703	THE EDGEWATER 666 WISCONSIN AVENUE MADISON, WISCONSIN	LAKE FRONT WALK CROSS SECTION 3	SCS ENGINEERS 2830 DAIRY DRIVE MADISON, WI 53718-6751 PHONE: (608) 224-2830	FIGURE
	PROJECT NO. 25212056.10	DRAWN BY: KP	ENGINEER		4
DRAWN:	12/02/14	CHECKED BY: BP			
REVISED:	07/18/14	APPROVED BY:			



PLAN VIEW

NO. 6 TIE BARS SPACED 3'-0" C.C., INSTALLED ON 6:1 SKEW HORIZONTALLY. DIRECTION OF SKEW ALTERNATING AFTER EVERY ONE OR TWO BARS. ANCHOR TIE BARS INTO DRILLED HOLES WITH AN EPOXY.



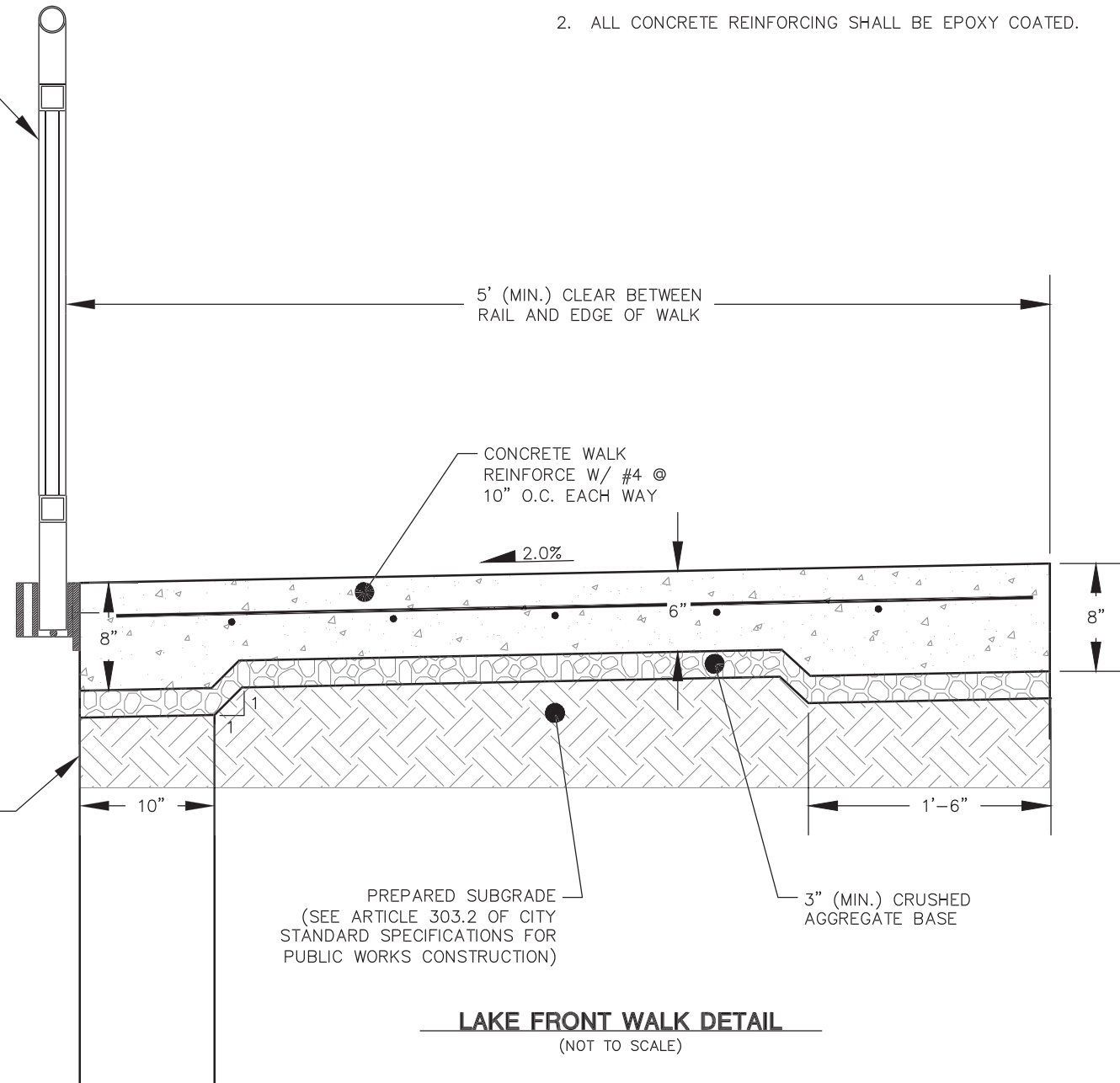
SECTION A-A'

EXISTING/PROPOSED WALK TIE-IN
(NOT TO SCALE)

THE HOLE FOR THE BAR SHALL BE DRILLED TO A DEPTH OF 7" AND TO SUCH A DIAMETER AS TO PROVIDE A TIGHT DRIVEN FIT

EXISTING CONCRETE PAVEMENT

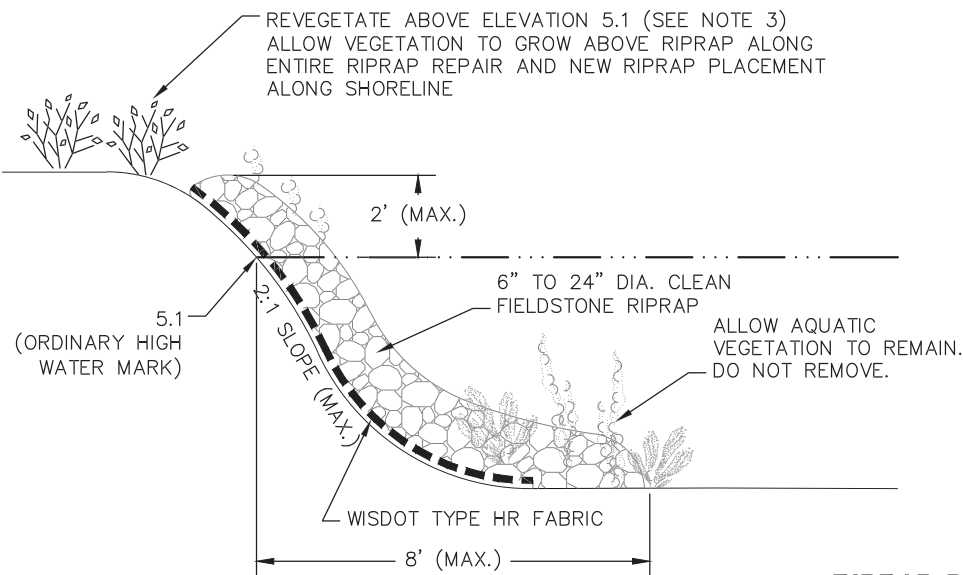
PROPOSED RAILING
SEE FIGURES A1 THROUGH A4
FOR RAILING DETAILS



NOTES:

1. SEE FIGURE 1 FOR EXTENT OF RAILINGS.
2. ALL CONCRETE REINFORCING SHALL BE EPOXY COATED.

LAKE FRONT WALK DETAIL
(NOT TO SCALE)



RIPRAP DETAIL
(NOT TO SCALE)

NOTES:

1. RIPRAP TO FOLLOW NATURAL CONTOUR OF SHORELINE.
2. DO NOT PLACE FILL MATERIAL BELOW ORDINARY HIGH WATER MARK.
3. VEGETATION SHALL CONSIST OF NATIVE PLANTINGS INCLUDING NON-WOODY PLANTS, NATIVE SHRUB PLANTINGS, NATIVE LIVE STAKES AND/OR NATIVE JOINTED PLANTS.
4. DECONTAMINATE EQUIPMENT OR PORTIONS IF EQUIPMENT USED FOR CONSTRUCTION IN THE WATERWAY TO REMOVE INVASIVE SPECIES AND VIRUSES BEFORE AND AFTER USE OR PRIOR TO USE WITHIN ANOTHER PUBLIC WATERWAY.



LAKE FRONT WALK
DETAILS

THE EDGEWATER
666 WISCONSIN AVENUE
MADISON, WISCONSIN

SITE

EDgewater HOTEL, LLC
22 EAST MIFFLIN STREET, SUITE 800
MADISON, WI 53703

FIGURE
5

SCS ENGINEERS
2830 DAIRY DRIVE MADISON, WI 53718-6751
PHONE: (608) 224-2830

ENGINEER

KP

BP

DRAWN BY:

CHECKED BY:

APPROVED BY:

PROJECT NO. 25212056.10

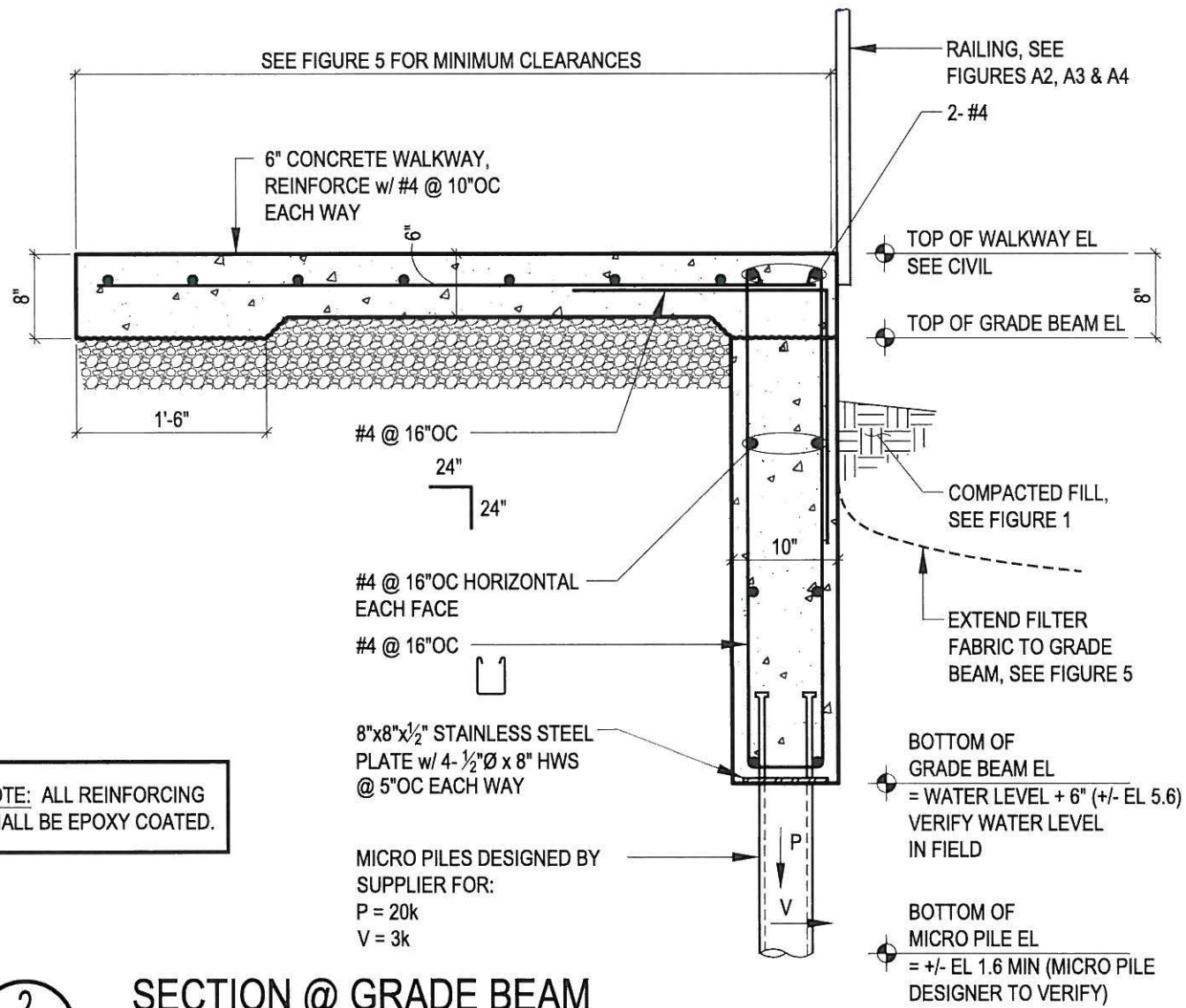
12/02/14

07/18/14

REVISIONS:

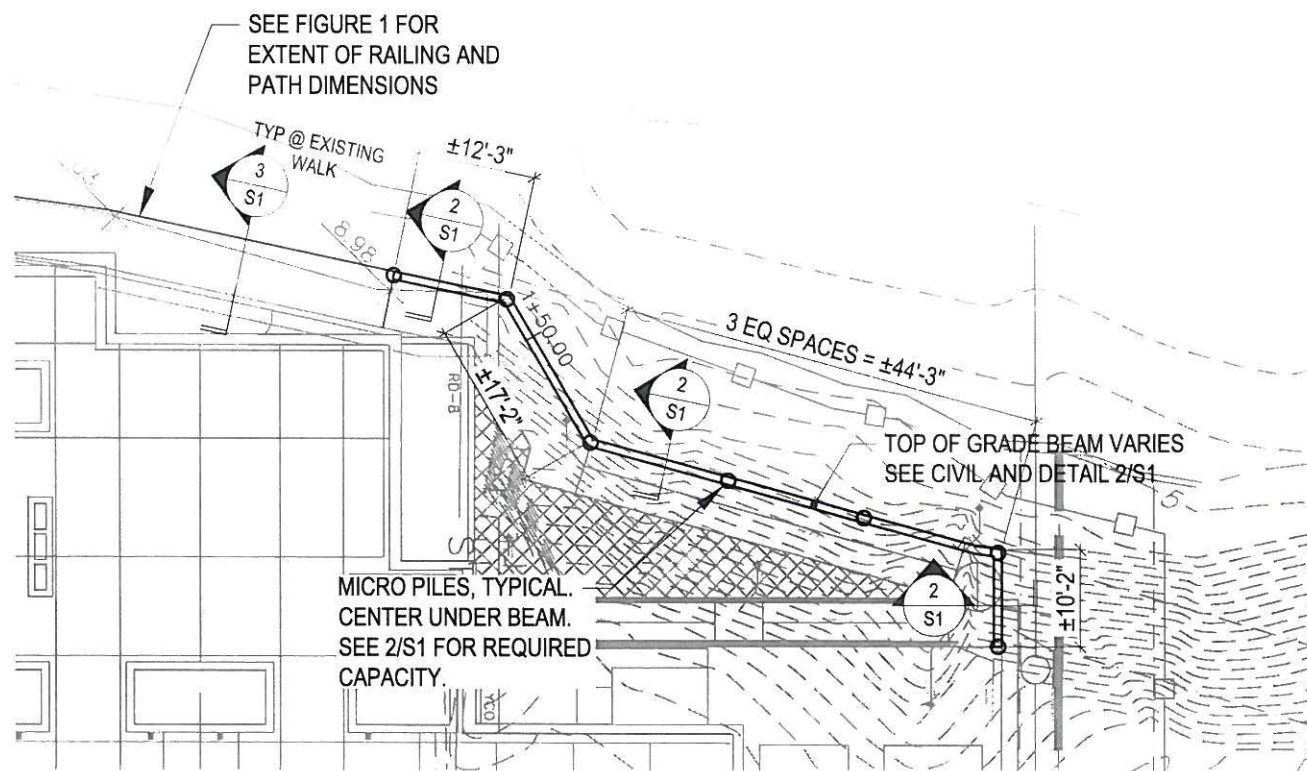


2/27/14

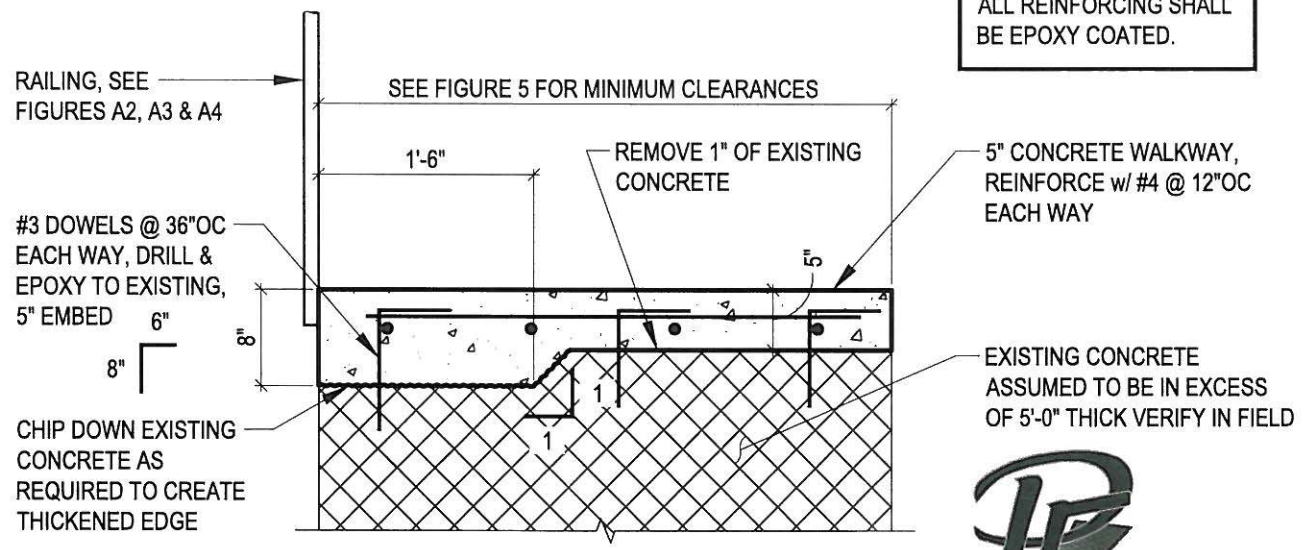


NOTE: ALL REINFORCING SHALL BE EPOXY COATED.

2
S1 SECTION @ GRADE BEAM
SCALE : NTS



1
S1 PLAN @ LAKE FRONT WALK
SCALE : 1" = 20'-0"

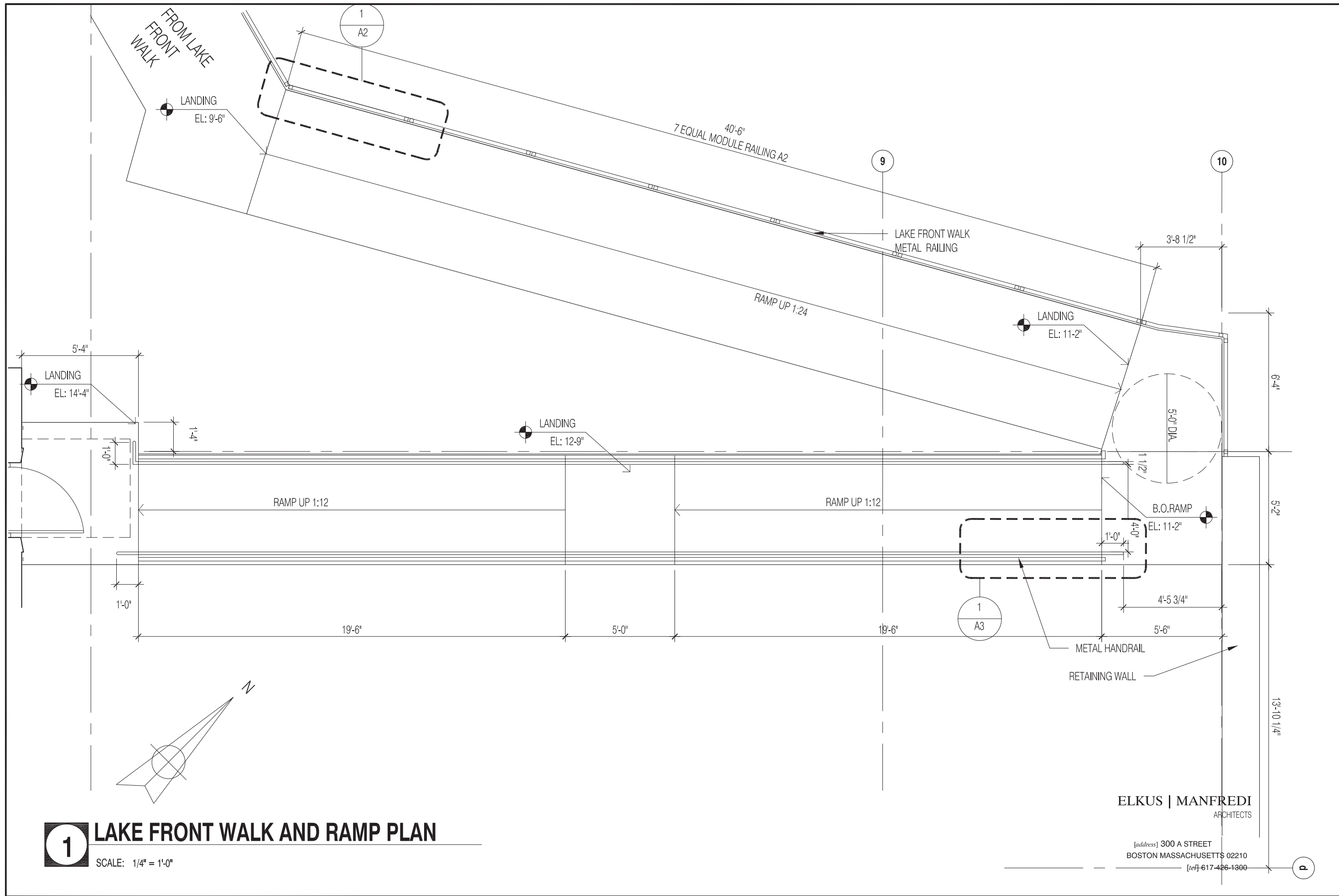


NOTE: ALL REINFORCING SHALL BE EPOXY COATED.

3
S1 NEW CONCRETE OVER EXISTING WALKWAY
SCALE : NTS

PIERCE ENGINEERS INC
CONSULTING STRUCTURAL ENGINEERS
10 West Mifflin St, Suite 205 | Madison, WI 53703
Phone: 608.256.7304 | Fax: 608.256.7306
PE PROJECT 08205

CLIENT	THE EDGEWATER 666 WISCONSIN AVENUE MADISON, WISCONSIN			ENGINEER	FIGURE	S1
	PROJECT NO.	25212056.10	DRAWN BY:	PE	SCS ENGINEERS	
DRAWN:	07/08/14	CHECKED BY:	PE	2830 DAIRY DRIVE MADISON, WI 53718-6751 PHONE: (608) 224-2830		
REVISED:		APPROVED BY:				



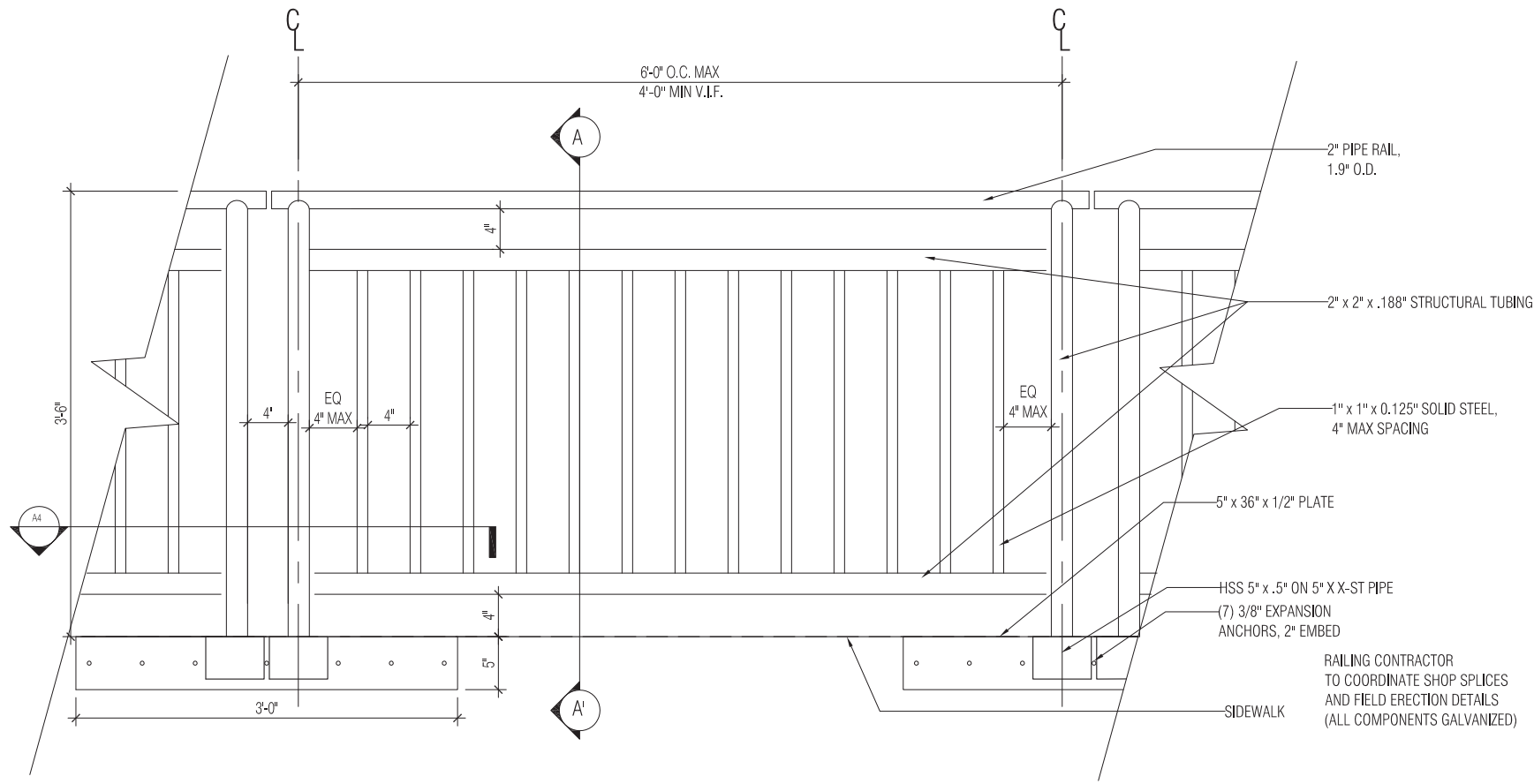
1 LAKE FRONT WALK AND RAMP PLAN

SCALE: 1/4" = 1'-0"

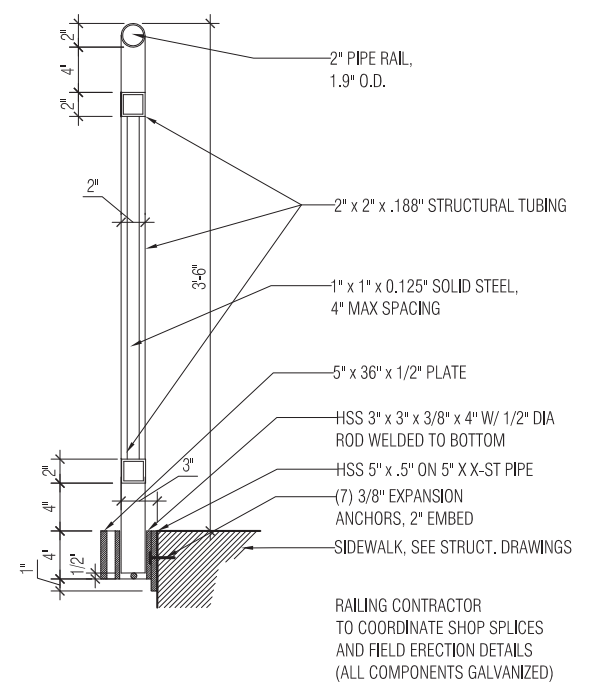
ELKUS | MANFREDI
ARCHITECTS

[address] 300 A STREET
BOSTON MASSACHUSETTS 02210
[tel] 617 426-1300

CLIENT	EDGEWATER HOTEL, LLC 22 EAST MIFFLIN STREET, SUITE 800 MADISON, WI 53703	THE EDGEWATER 666 WISCONSIN AVENUE MADISON, WISCONSIN	LAKE FRONT WALK	FIGURE A1
PROJECT NO.	25212056.10			SCS ENGINEERS 2830 DAIRY DRIVE MADISON, WI 53718-6751 PHONE: (608) 224-2830
DRAWN BY:	07/18/14			
CHECKED BY:				
REVISD BY:				ENGINEER



1 TYPICAL LAKE FRONT WALK RAILING ELEVATION/SECTION
SCALE: 3/4" = 1'-0"

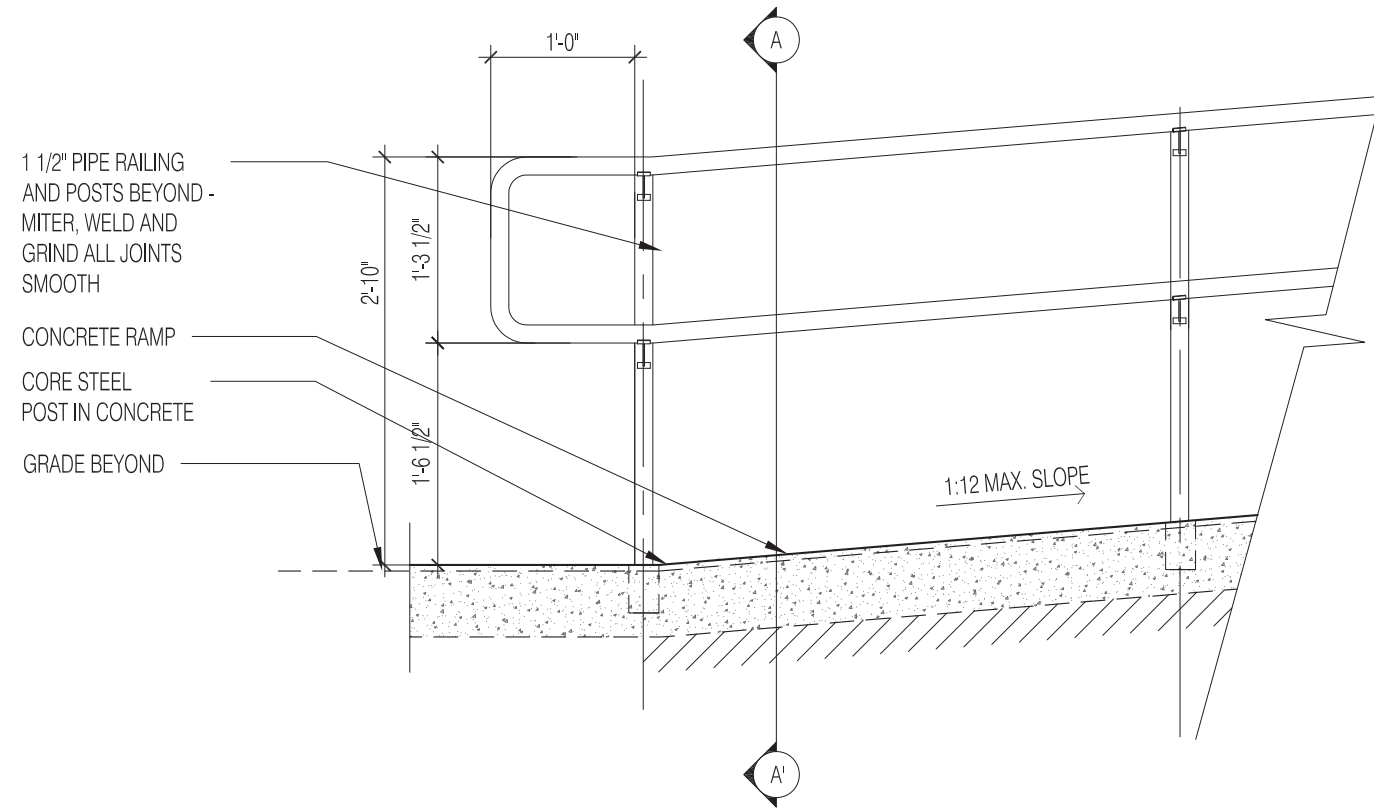


2 SECTION A-A'
SCALE: 3/4" = 1'-0"

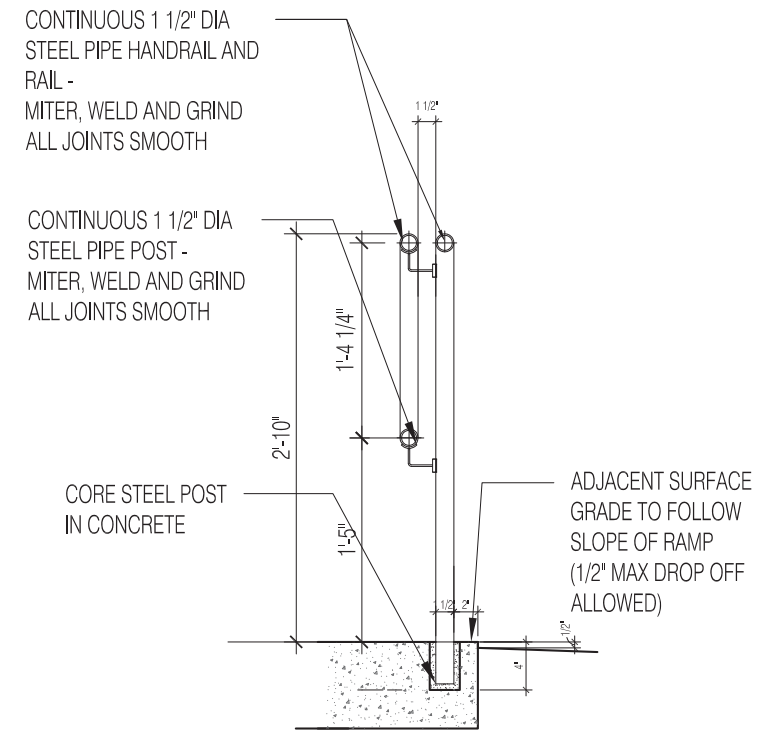
ELKUS | MANFREDI
ARCHITECTS

[address] 300 A STREET
BOSTON MASSACHUSETTS 02210
[tel] 617-426-1300

CLIENT	EDGEWATER HOTEL, LLC 22 EAST MIFFLIN STREET, SUITE 800 MADISON, WI 53703	PROJECT NO.	25212056.10	DRAWN BY:	KP	ENGINEER	SCS ENGINEERS 2830 DAIRY DRIVE MADISON, WI 53718-6751 PHONE: (608) 224-2830	LAKE FRONT WALK	FIGURE	A2
		DRAWN:	07/18/14	CHECKED BY:	BP					
		REVISD:		APPROVED BY:						



1 TYPICAL ACCESSIBLE RAMP RAILING ELEVATION
SCALE: 3/4" = 1'-0"

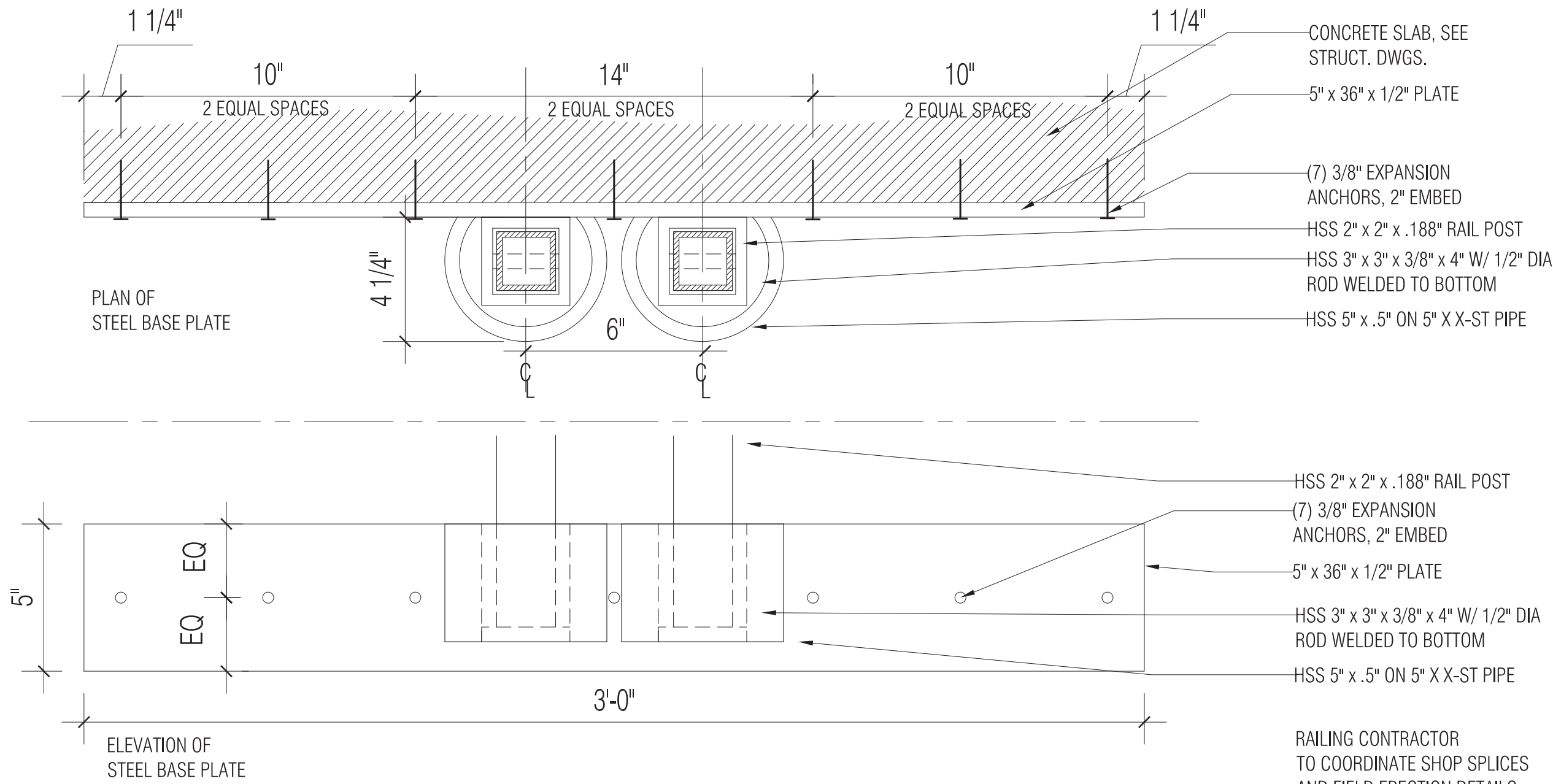


2 SECTION A-A'
SCALE: 3/4" = 1'-0"

ELKUS | MANFREDI
ARCHITECTS

[address] 300 A STREET
BOSTON MASSACHUSETTS 02210
[tel] 617-426-1300

CLIENT	EDGEWATER HOTEL, LLC 22 EAST WISCONSIN AVENUE MADISON, WI 53703	THE EDGEWATER 666 WISCONSIN AVENUE MADISON, WISCONSIN	LAKE FRONT WALK
	PROJECT NO. 25212056.10	DRAWN BY: [blank]	ENGINEER [blank]
DRAWN:	07/18/14	CHECKED BY: [blank]	FIGURE A3
REVISED:		APPROVED BY: [blank]	SCS ENGINEERS 2830 DAIRY DRIVE MADISON, WI 53718-6751 PHONE: (608) 224-2830



RAILING CONTRACTOR
TO COORDINATE SHOP SPLICES
AND FIELD ERECTION DETAILS
(ALL COMPONENTS GALVANIZED)

6 TYPICAL LAKE FRONT WALK RAILING BASE PLATE DETAIL
SCALE: 3" = 1'-0"

ELKUS | MANFREDI
ARCHITECTS
[address] 300 A STREET
BOSTON MASSACHUSETTS 02210
[tel] 617-426-1300

CLIENT	EDGEWATER HOTEL, LLC 22 EAST MIFFLIN STREET, SUITE 800 MADISON, WI 53703	THE EDGEWATER 666 WISCONSIN AVENUE MADISON, WISCONSIN	LAKE FRONT WALK	FIGURE A4
PROJECT NO.	25212056.10			SCS ENGINEERS 2830 DAIRY DRIVE MADISON, WI 53718-6751 PHONE: (608) 224-2830
DRAWN BY:	07/18/14			
CHECKED BY:				
APPROVED BY:				ENGINEER