

Madison, Wisconsin

CITY OF MADISON

CITY ENGINEERING DIVISION

DEPARTMENT OF PUBLIC WORKS

PLAN OF PROPOSED IMPROVEMENT

PUBLIC IMPROVEMENT PROJECT APPROVED

OCTOBER 15, 2013

BY THE COMMON COUNCIL OF MADISON, WISCONSIN

PUBLIC IMPROVEMENT DESIGN APPROVED BY:

[Signature] 11/19/13
City Engineer Date

INDEX OF SHEETS

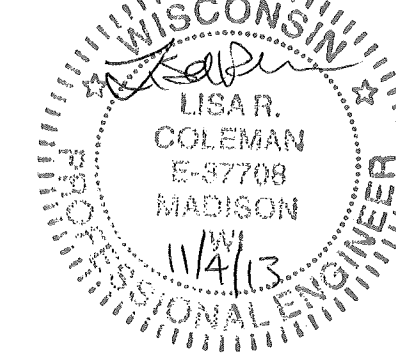
| SHEET NO. | TITLE |
|-----------|---|
| 1 | DETAILS |
| D1-D2 | ISLAND DETAIL |
| D3 | MONROE STREET PLAN & PROFILE |
| P1 | KNICKERBOCKER STREET PLAN & PROFILE |
| P2 | UTILITY PLAN |
| U1 | STORM SEWER SCHEDULE |
| U2 | ELECTRICAL PLAN (TO BE ISSUED SEPARATELY) |
| E1 | PAVEMENT MARKING PLAN |
| M1 | |

2620 MONROE STREET

CITY PROJECT NO. 53B2364

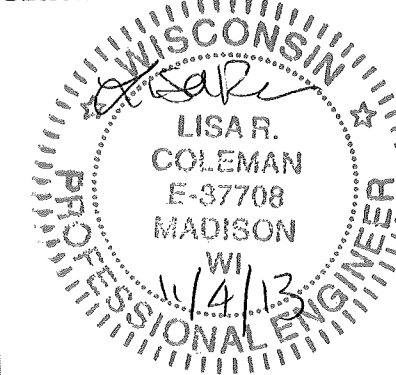
CONTRACT NO. 2364

STREET & SIDEWALK GRADES DESIGNED BY:



GEOMETRICS DESIGNED BY:

STORM SEWER DESIGNED BY:



TRAFFIC ENGINEER

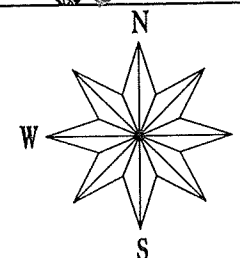
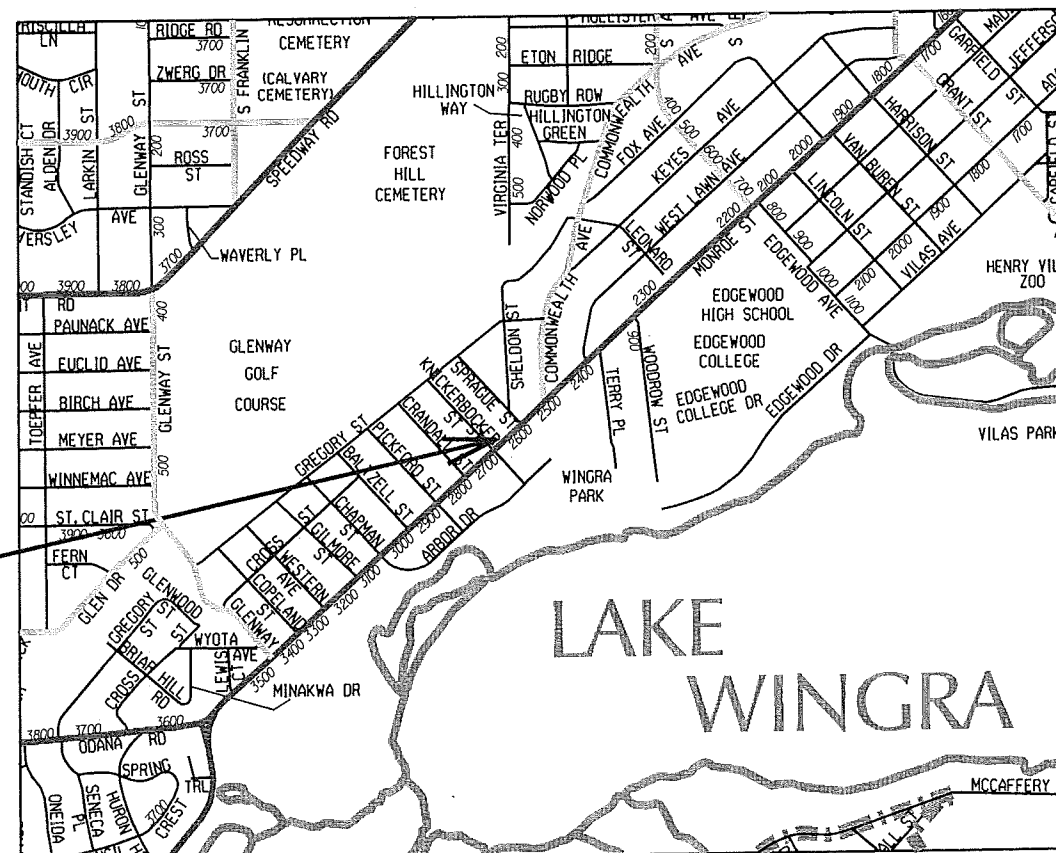
ELECTRICAL DESIGNED BY:

SANITARY SEWER DESIGNED BY:

LATERAL ONLY

| CONVENTIONAL SIGNS | |
|--|---------|
| FIELD VERIFY ALL UTILITY LOCATIONS | |
| GAS | — G — |
| STORM SEWER | — ST — |
| SANITARY SEWER | — SAN — |
| WATER | — W — |
| OVERHEAD ELECTRIC | — OH — |
| POWER POLE | ⊕ |
| ADA COMPLIANT RAMP W/ DETECTABLE WARNING FIELD | |
| COMBUSTIBLE FLUIDS | |

CONSTRUCTION PROJECT LOCATION



NOTES:

ALL GUTTERS SHALL DRAIN WITH A MINIMUM GRADE OF 0.50% TOWARD STORM SEWER INLETS.

SIDEWALK RAMPS AND CURB THRU SIDEWALK RAMPS SHALL HAVE A MAXIMUM SLOPE OF 1" PER 12". SIDEWALK AND CURB RAMPS SHALL BE CONSTRUCTED WITH A SIDE SLOPE OF 2.00%. SIDEWALK SHALL HAVE A MINIMUM LONGITUDINAL SLOPE OF 0.50% AND A MAXIMUM LONGITUDINAL SLOPE OF 5.00% EXCEPT WHERE STREET GRADES EXCEED 5.00%.

PLOT SCALE:

PLOT NAME:

REV. DATE:

ORIGINATOR: CITY OF MADISON, STREETS DIVISION

THE LOCATION AND INFORMATION FOR PROPOSED NEW TREES, IN THE PUBLIC RIGHT OF WAY OR ON PUBLIC LANDS ARE APPROXIMATE AND ARE SHOWN FOR REFERENCE ONLY. THE LOCATIONS, SPECIFICATIONS AND PLANTING METHODS OF ALL PROPOSED NEW OR REPLACEMENT TREES IN THE PUBLIC RIGHT OF WAY OR ON PUBLIC LANDS SHALL BE APPROVED BY THE CITY FORESTER PRIOR TO INSTALLATION.

NO TREES IN THE RIGHT OF WAY OR ON PUBLIC LANDS SHALL BE TRIMMED, PRUNED, REMOVED OR ADVERSELY AFFECTED IN ANY WAY UNTIL THE DEVELOPER HAS RECEIVED WRITTEN PERMISSION FROM THE CITY ENGINEER OR CITY FORESTER. SAID WRITTEN PERMISSION SHALL INCLUDE LANGUAGE INDICATING THAT SECTION 10.101 OF THE MADISON GENERAL ORDINANCES AND ADMINISTRATIVE PROCEDURE MEMORANDUM NO. 6-2, REFERING TO NOTIFICATION OF PROPERTY OCCUPANTS AND/OR OWNERS, HAS BEEN COMPLIED WITH.

THE DEVELOPER/CONTRACTOR SHALL SUBMIT A TRAFFIC CONTROL PLAN FOR REVIEW TO CITY TRAFFIC ENGINEERING AT LEAST 10 WORKING DAYS PRIOR TO WORK BEGINNING WITHIN THE RIGHT OF WAY. WORK SHALL NOT PROCEED IN THE RIGHT OF WAY UNTIL THE TRAFFIC CONTROL PLAN HAS BEEN APPROVED. THE TRAFFIC CONTROL PLAN MAY INCLUDE BUT IS NOT LIMITED TO: LANE CLOSURE RESTRICTIONS, PEAK HOUR WORKING RESTRICTIONS, ACCESS REQUIREMENTS, ETC. THE DEVELOPER/CONTRACTOR SHALL BE RESPONSIBLE FOR PHASING WORK AS NECESSARY TO MEET THE REQUIREMENTS OF THE APPROVED TRAFFIC CONTROL PLAN.

THE DEVELOPER/CONTRACTOR SHALL CONTACT CITY FORESTRY (DEAN KAHL 266-4891 OR 266-4816) PRIOR TO EXCAVATING WITHIN 5 FT. OF AN EXISTING TREE SO THAT THEY MAY PROVIDE DIRECTION ON THE WORK. THE DEVELOPER/CONTRACTOR SHALL ALSO CONTACT CITY FORESTRY AT LEAST ONE WEEK PRIOR TO ANY TREE REMOVALS OR PRUNING TO OBTAIN A PERMIT FOR TREE REMOVAL OR PRUNING WITHIN THE RIGHT-OF-WAY.

CONTRACTOR SHALL INSTALL TREE TYPES SPECIFIED AT APPROX. LOCATIONS SHOWN WITHIN THE TERRACE OF KNICKERBOCKER STREET. CONTRACTOR SHALL CONTACT DEAN KAHL WITH CITY FORESTRY (266-4891 OR 266-4816) AT LEAST ONE WEEK PRIOR TO PLANTING TO ALLOW FORESTRY TO MARK THE PLANTING SITES AND REVIEW PLANTING SPECIFICATIONS WITH THE LANDSCAPING CONTRACTOR.

ALL PAVEMENT IN THE MONROE STREET RIGHT-OF-WAY SHALL BE TYPE C PAVEMENT. ALL PAVEMENT IN THE KNICKERBOCKER STREET RIGHT-OF-WAY SHALL BE TYPE B PAVEMENT. MONROE STREET PAVEMENT RATING IS 4 AND KNICKERBOCKER STREET PAVEMENT RATING IS 4. SAWCUTS, PATCHING & MILL & OVERLAY LIMITS SHOWN ARE APPROXIMATE - LIMITS SHALL BE AT THE DISCRETION OF THE CONSTRUCTION ENGINEER & IN ACCORDANCE WITH CITY OF MADISON PATCHING CRITERIA.

ALL ISLANDS SHALL HAVE MOUNTABLE NOSES PER S.D.D. 3.13. ALL OTHER C & G SHALL BE TYPE "A" PER S.D.D. 3.06 UNLESS OTHERWISE NOTED.

ISLAND INTERIORS SHALL BE OF SOD WHERE THE BACK TO BACK OF CURB DIMENSION IS GREATER THAN 6'.

UNDERDRAINS SHALL BE INSTALLED, PER STANDARD DETAIL DRAWING 4.05 FOR 75' ON EACH SIDE OF THE LOW POINT, OR TO THE NEAREST CURB HIGH POINT. ALL UNDERDRAIN SHALL BE WRAPPED.

ALL GUTTERS SHALL DRAIN WITH A MINIMUM GRADES OF 0.5% TOWARD STORM SEWER INLETS.

PAVEMENT CROSS SLOPES SHALL BE 2%, TERRACES SHALL SLOPE AT A 4% GRADE TOWARD THE GUTTER, SHOULDERS SHALL HAVE A 4% CROSS SLOPE AND CROSS SLOPES FORMING DITCHES SHALL NOT EXCEED 4.00:1 UNLESS OTHERWISE INDICATED.

THE CROSS SLOPE OF SIDEWALKS AND BARRIER FREE SIDEWALK CURB RAMPS SHALL BE 2%. THE LONGITUDINAL GRADE OF BARRIER FREE SIDEWALK CURB RAMPS SHALL NOT EXCEED 8.33%. ALL SIDEWALK RAMPS SHALL BE CONSTRUCTED ACCORDING TO S.D.D. 3.03. AT ALL OTHER LOCATIONS THE LONGITUDINAL GRADE OF SIDEWALKS SHALL NOT EXCEED 5.0 % OR THE ADJACENT STREET GRADE WHICHEVER IS GREATER NOR BE LESS THAN 0.5% AND SHALL DRAIN TOWARD STORM SEWER INLETS. A 2 FOOT WIDE CONCRETE FLUME SHALL BE INSTALLED BETWEEN THE SIDEWALK AND THE BACK OF CURB AT SIDEWALK LOW POINTS WHICH CANNOT OTHERWISE BE DRAINED DIRECTLY TO THE GUTTER. SIDE SLOPES WITHIN TEN FEET OF A PUBLIC SIDEWALK SHALL NOT EXCEED 4.00:1. ALL SIDEWALK AND SIDEWALK RAMP ELEVATIONS AND GRADES SHALL BE FIELD VERIFIED AND SET TO COMPLY WITH THE CITY OF MADISON STANDARD SPECIFICATIONS AND THE A.D.A. GUIDELINES.

OBTAIN A PRINT OUT OF THE ALIGNMENT FROM THE CITY ENGINEER PRIOR TO STAKING THIS PROJECT.

CURB STATION AND OFFSETS SHALL BE TO THE FACE OF CURB UNLESS OTHERWISE INDICATED. CURB ELEVATIONS SHALL BE TO THE TOP OF CURB (OR EXTENDED TOP OF CURB FOR DRIVEWAYS OR RAMPS) UNLESS OTHERWISE INDICATED.

POWER POLES AND OTHER OBSTRUCTIONS SHALL BE MOVED TO PROVIDE 2 FEET MINIMUM OF CLEAR DISTANCE FROM ANY FACE OF CURB OR EDGE OF SIDEWALK.

ANY INFORMATION SHOWN ON THIS PLAN, WHICH IS NOT PART OF THIS PROJECT, IS PRELIMINARY AND NOT FOR CONSTRUCTION.

THERE MAY BE EXISTING UTILITIES OR OTHER FEATURES WHICH ARE EITHER NOT SHOWN OR SHOWN INCORRECTLY ON THIS PLAN. IT IS THE RESPONSIBILITY OF THE DEVELOPER TO LOCATE AND IDENTIFY ALL UTILITIES AND TOPOGRAPHY WHICH MAY AFFECT THE CONSTRUCTION OF THESE IMPROVEMENTS.

ALL PERMANENT SIGNING AND POSTING WILL BE DETERMINED AND PROVIDED BY THE TRAFFIC ENGINEERING DIVISION, FOLLOWING CONSTRUCTION OF THESE IMPROVEMENTS.

THE DEVELOPER SHALL PROVIDE, INSTALL AND MAINTAIN ALL STREET END BARRICADES, SIGNING AND TRAFFIC CONTROL, AS REQUIRED BY THE CITY TRAFFIC ENGINEER.

PAVEMENT SAWCUTS SHALL BE AS DIRECTED BY THE CITY CONSTRUCTION ENGINEER. SAWCUTS SHOWN ON THE PLAN ARE APPROXIMATE.

CURB ON CUL DE SACS SHALL BE INSTALLED ACCORDING TO SDD 3.05.

PLOT SCALE: _____

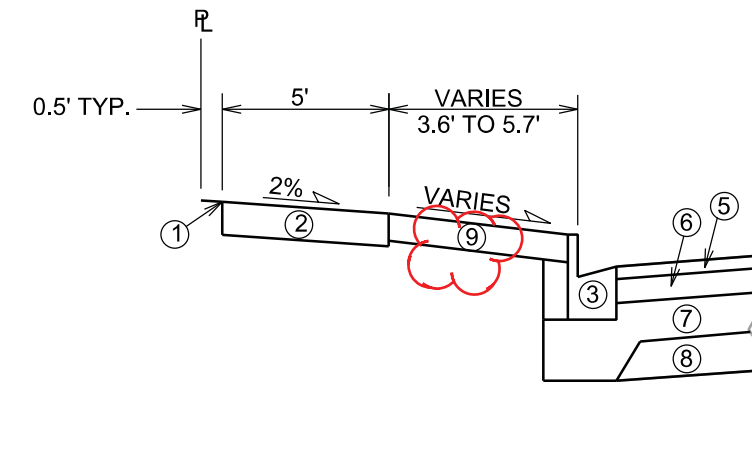
PLOT NAME: _____

REV. DATE: _____

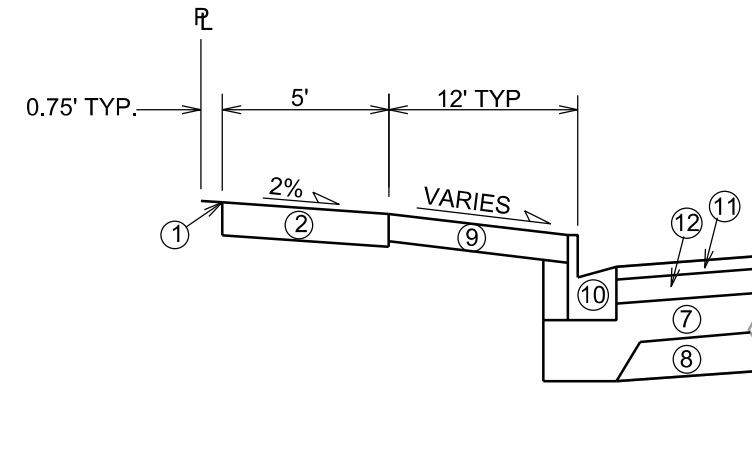
ORIGINATOR: CITY OF MADISON, STREETS DIVISION

- ① REFERENCE LINE AND/OR POINT REFERRED TO ON PROFILE
- ② 5" OR 7" CONCRETE SIDEWALK
- ③ TYPE 'H' CONCRETE CURB & GUTTER
- ④ 5" CONCRETE PAVED TERRACE
- ⑤ 2" UPPER LAYER BIT PVMT, 12.5 mm, TYPE E-3
- ⑥ 3.25" LOWER LAYER BIT PVMT, 19 mm, TYPE E-3
- ⑦ GRADATION 2 CRUSHED AGG BASE COURSE, 4" TYP.
- ⑧ GRADATION 1 CRUSHED AGG BASE COURSE, 6" TYP
- ⑨ 4" TOPSOIL, SEED & MAT
- ⑩ TYPE A CONCRETE CURB & GUTTER, 4" CURB HEAD
- ⑪ 2" UPPER LAYER BIT PVMT, 12.5 mm, TYPE E-1
- ⑫ 2.25" LOWER LAYER BIT PVMT, 19.0 mm, TYPE E-1

TYPICAL FINISHED SECTION
MONROE STREET
NTS



TYPICAL FINISHED SECTION
KNICKERBOCKER STREET
NTS

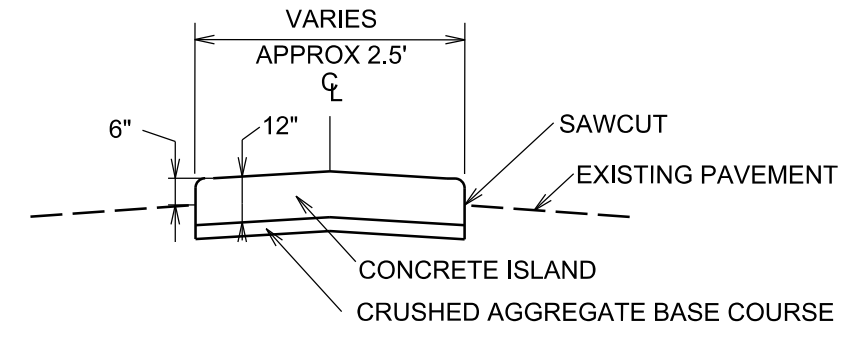
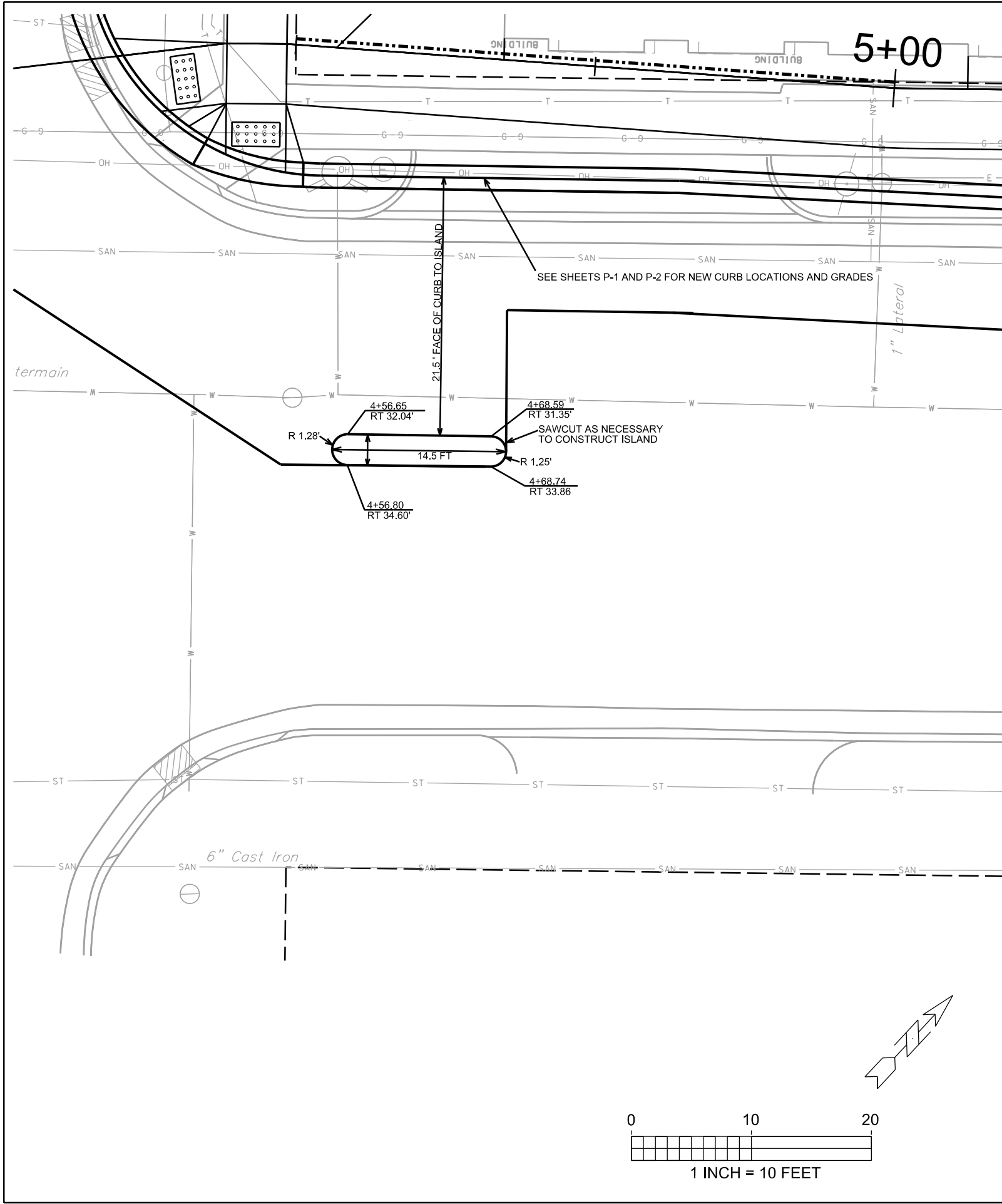


PLOT SCALE: _____

PLOT NAME: _____

REV. DATE: _____

ORIGINATOR: CITY OF MADISON, STREETS DIVISION



- NOTES:
1. ALL ISLANDS SHALL HAVE CONCRETE MOUNTABLE NOSES PER S.D.D. 3.13

TYPICAL FINISHED SECTION
PEDESTRIAN ISLAND
NTS

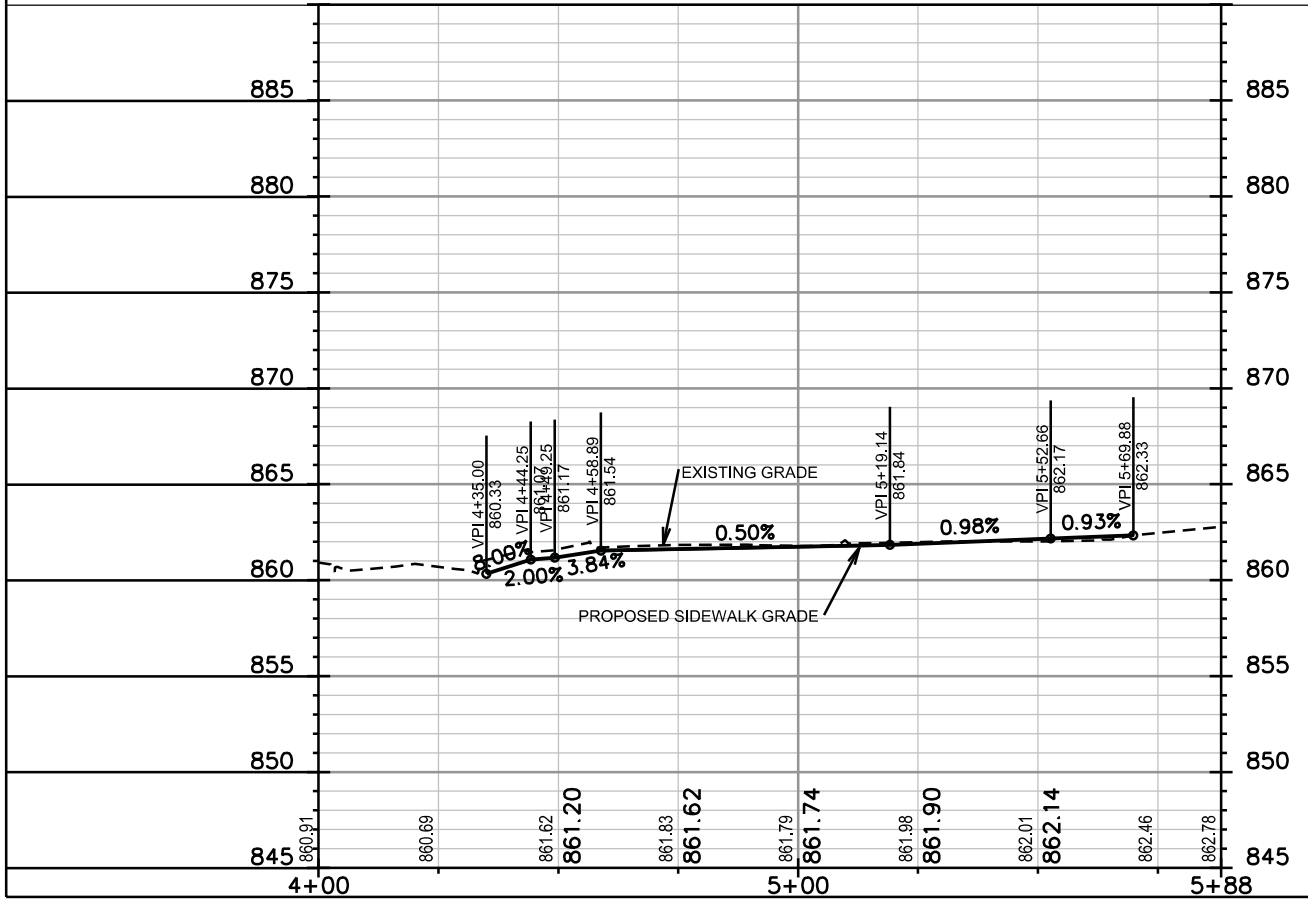
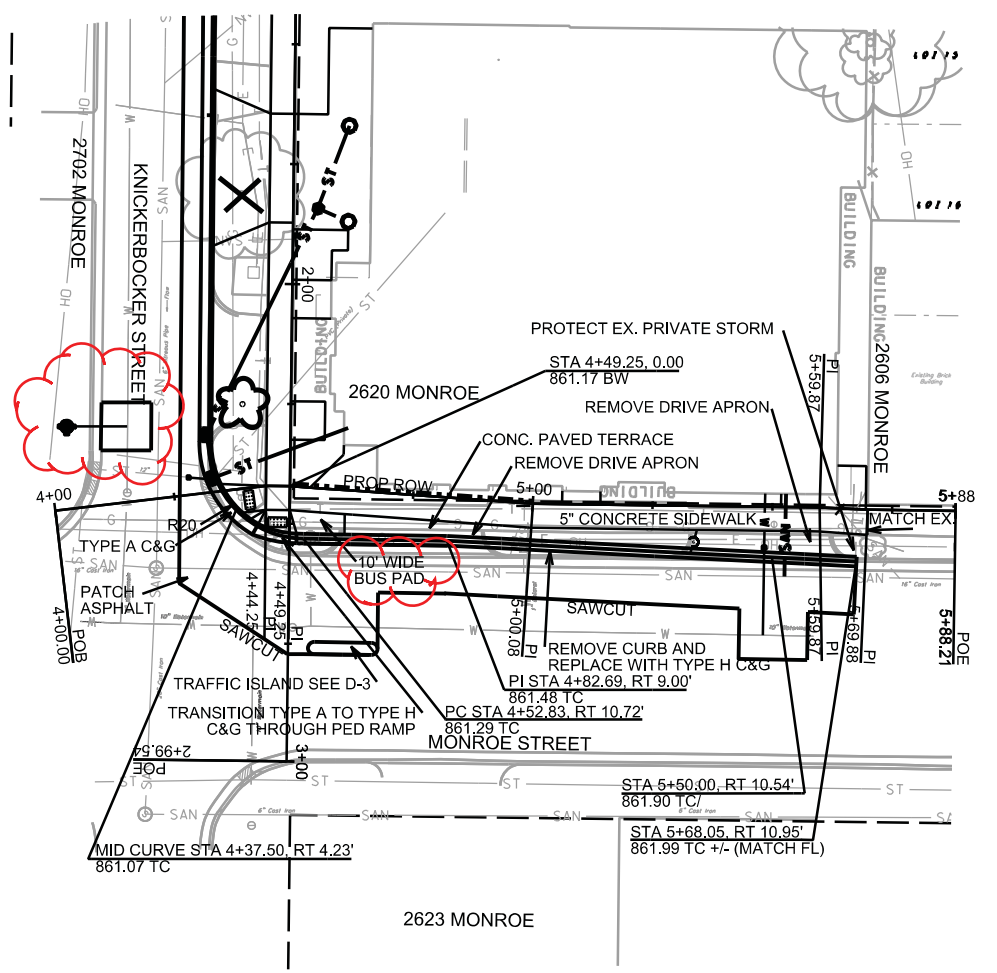
PLOT SCALE: _____
PLOT NAME: _____
REV. DATE: _____
ORIGINATOR: CITY OF MADISON, STREETS DIVISION

REVISED 10/2/15 LRC

NOTES:

- SAWCUT LIMITS SHOWN ARE APPROXIMATE AND MAY BE ADJUSTED AS NECESSARY IN THE FIELD BY CITY CONSTRUCTION ENGINEER.
- CONTRACTOR SHALL REPLACE TREES AS SHOWN ON THE PLANS. CONTRACTOR SHALL CONTACT DEAN KAHL WITH CITY FORESTRY (266-4891 OR 266-4816) AT LEAST ONE WEEK PRIOR TO PLANTING TO ALLOW FORESTRY TO MARK THE PLANTING SITES AND REVIEW PLANTING SPECIFICATIONS WITH THE LANDSCAPING CONTRACTOR.
- CONTRACTOR AND DEVELOPER SHALL BE RESPONSIBLE FOR COORDINATING AND SCHEDULING ANY REQUIRED RELOCATION OF PRIVATE UTILITY FACILITIES WITH PRIVATE UTILITY COMPANIES.
- TRAFFIC CONTROL: CONTRACTOR SHALL MAINTAIN ONE LANE OF TRAFFIC IN EACH DIRECTION ON MONROE STREET AT ALL TIMES, EXCEPT DURING PEAK HOURS. DURING PEAK HOURS CONTRACTOR SHALL MAINTAIN 2 LANES OF TRAFFIC IN EACH DIRECTION. DEVELOPER/CONTRACTOR SHALL OBTAIN A STREET OCCUPANCY PERMIT FROM CITY BUILDING INSPECTION AND TRAFFIC ENGINEERING BEFORE BEGINNING ANY WORK WITHIN THE CITY RIGHT-OF-WAY. CONTACT MIKE DUHR WITH TRAFFIC ENGINEERING (267-8755) FOR STREET OCCUPANCY PERMIT.
- THE CONTRACTOR MAY REMOVE PARKING WITHIN THE PROJECT LIMITS, WHERE NECESSARY FOR CONSTRUCTION. THE CONTRACTOR SHALL BE RESPONSIBLE FOR POSTING AND MAINTAINING PARKING SIGNS IN ACCORDANCE WITH THE MANUAL ON UNIFORM TRAFFIC CONTROL DEVICES (MUTCD) AND THE CITY OF MADISON POLICE DEPARTMENT'S "GUIDELINES FOR TEMPORARY NO PARKING RESTRICTIONS FOR CONSTRUCTION OR SPECIAL EVENTS."
- THE CONTRACTOR SHALL NOT REMOVE OR COVER ANY TRAFFIC SIGNS. FOR REMOVAL, REPLACEMENT, OR COVERING OF TRAFFIC AND PARKING SIGNS, CONTACT THE CITY OF MADISON TRAFFIC ENGINEERING FIELD OPERATIONS, 1120 SAYLE STREET, 266-4767, 8:00 AM TO 4:00 PM, A MINIMUM OF 2 WORKING DAYS IN ADVANCE OF WHEN ANY EXISTING SIGNS NEED TO BE REMOVED OR COVERED. THIS SERVICE IS FREE OF CHARGE. IF THE CONTRACTOR REMOVES OR COVERS THE SIGNS, THE CONTRACTOR WILL BE BILLED FOR THE REINSTALLATION OR REPAIR OF, AND ANY DAMAGE TO, THE SIGNING EQUIPMENT.
- FOR TEMPORARY RELOCATION OF BUS STOP DURING CONSTRUCTION, CONTACT TIM SOBOTA AT MADISON METRO 261-4289, AT LEAST 5 BUSINESS DAYS PRIOR TO NEEDED RELOCATION OF STOP.

FOR TEMPORARY RELOCATION OF BUS STOP DURING CONSTRUCTION, CONTACT TIM SOBOTA AT MADISON METRO 261-4289, AT LEAST 5 BUSINESS DAYS PRIOR TO NEEDED RELOCATION OF STOP.



PLOT SCALE:

PLOT NAME:

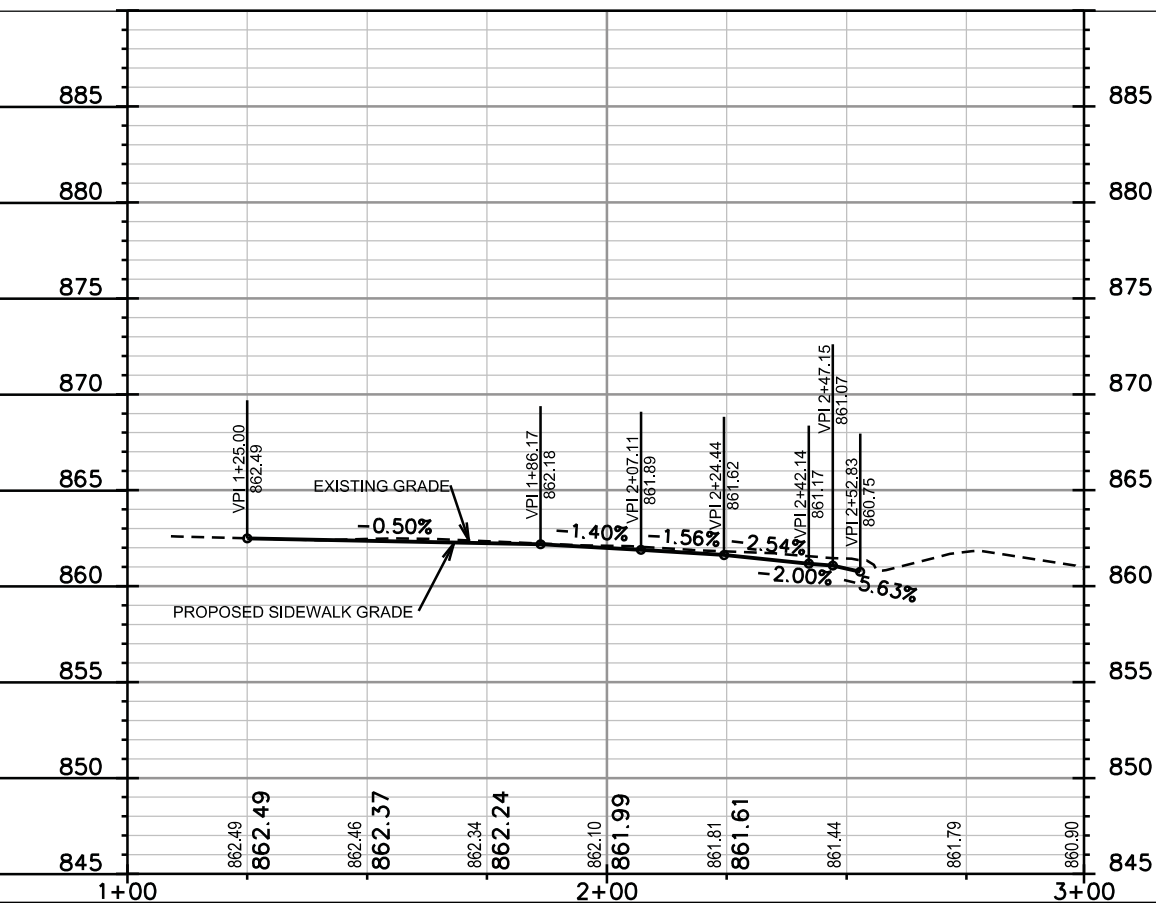
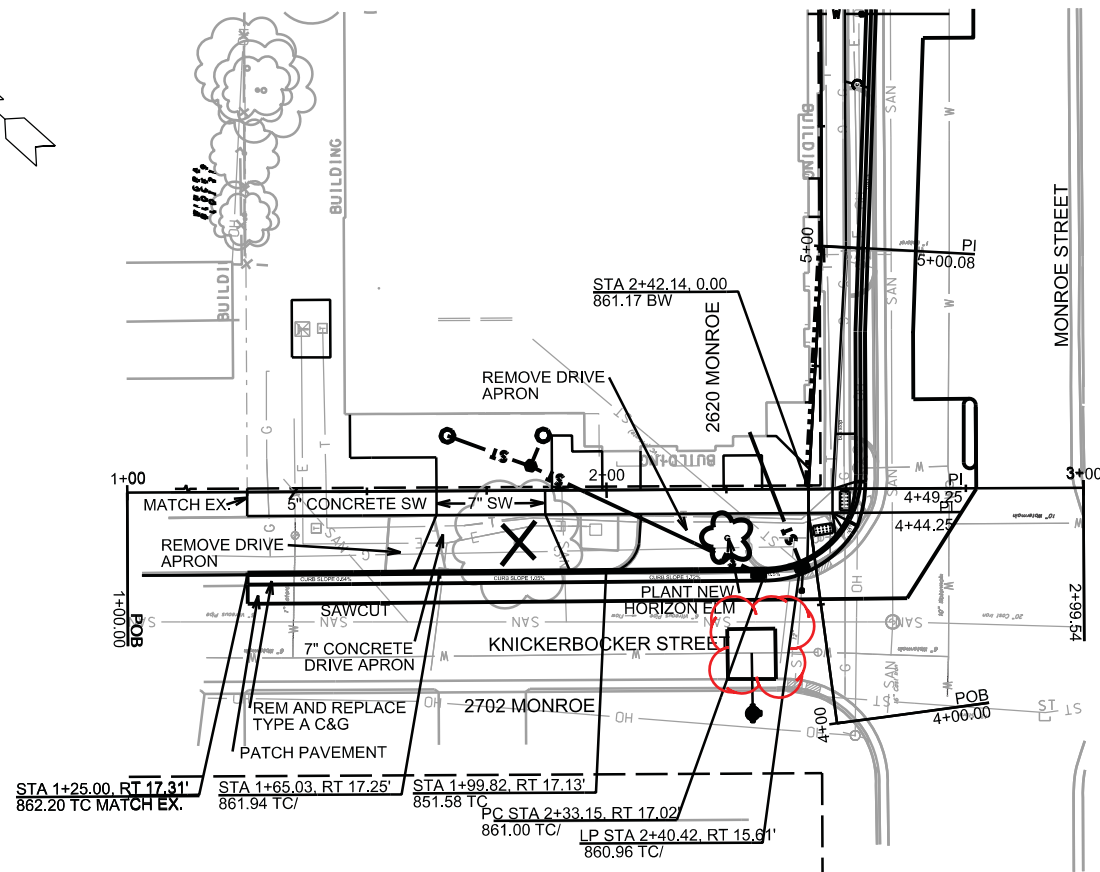
REV. DATE:

ORIGINATOR: CITY OF MADISON, STREETS DIVISION

PLAN AND PROFILE
KNICKERBOCKER SIDEWALK CITY OF MADISON
REVISED 10/2/15 LRC

NOTES:

1. SAWCUT LIMITS SHOWN ARE APPROXIMATE AND MAY BE ADJUSTED AS NECESSARY IN THE FIELD BY CITY CONSTRUCTION ENGINEER.
2. CONTRACTOR SHALL REPLACE TREES AS SHOWN ON THE PLANS. CONTRACTOR SHALL CONTACT DEAN KAHL WITH CITY FORESTRY (266-4891 OR 266-4816) AT LEAST ONE WEEK PRIOR TO PLANTING TO ALLOW FORESTRY TO MARK THE PLANTING SITES AND REVIEW PLANTING SPECIFICATIONS WITH THE LANDSCAPING CONTRACTOR.
3. CONTRACTOR AND DEVELOPER SHALL BE RESPONSIBLE FOR COORDINATING AND SCHEDULING ANY REQUIRED RELOCATION OF PRIVATE UTILITY FACILITIES WITH PRIVATE UTILITY COMPANIES.
4. TRAFFIC CONTROL: CONTRACTOR SHALL MAINTAIN ONE LANE OF TRAFFIC IN EACH DIRECTION ON MONROE STREET AT ALL TIMES, EXCEPT DURING PEAK HOURS. DURING PEAK HOURS CONTRACTOR SHALL MAINTAIN 2 LANES OF TRAFFIC IN EACH DIRECTION. DEVELOPER/CONTRACTOR SHALL OBTAIN A STREET OCCUPANCY PERMIT FROM CITY BUILDING INSPECTION AND TRAFFIC ENGINEERING BEFORE BEGINNING ANY WORK WITHIN THE CITY RIGHT-OF-WAY. CONTACT MIKE DUHR WITH TRAFFIC ENGINEERING (267-8755) FOR STREET OCCUPANCY PERMIT.
5. THE CONTRACTOR MAY REMOVE PARKING WITHIN THE PROJECT LIMITS, WHERE NECESSARY FOR CONSTRUCTION. THE CONTRACTOR SHALL BE RESPONSIBLE FOR POSTING AND MAINTAINING PARKING SIGNS IN ACCORDANCE WITH THE MANUAL ON UNIFORM TRAFFIC CONTROL DEVICES (MUTCD) AND THE CITY OF MADISON POLICE DEPARTMENT'S "GUIDELINES FOR TEMPORARY NO PARKING RESTRICTIONS FOR CONSTRUCTION OR SPECIAL EVENTS."
6. THE CONTRACTOR SHALL NOT REMOVE OR COVER ANY TRAFFIC SIGNS. FOR REMOVAL, REPLACEMENT, OR COVERING OF TRAFFIC AND PARKING SIGNS, CONTACT THE CITY OF MADISON TRAFFIC ENGINEERING FIELD OPERATIONS, 1120 SAYLE STREET, 266-4767, 8:00 AM TO 4:00 PM, A MINIMUM OF 2 WORKING DAYS IN ADVANCE OF WHEN ANY EXISTING SIGNS NEED TO BE REMOVED OR COVERED. THIS SERVICE IS FREE OF CHARGE. IF THE CONTRACTOR REMOVES OR COVERS THE SIGNS, THE CONTRACTOR WILL BE BILLED FOR THE REINSTALLATION OR REPAIR OF, AND ANY DAMAGE TO, THE SIGNING EQUIPMENT.



PLOT SCALE: _____

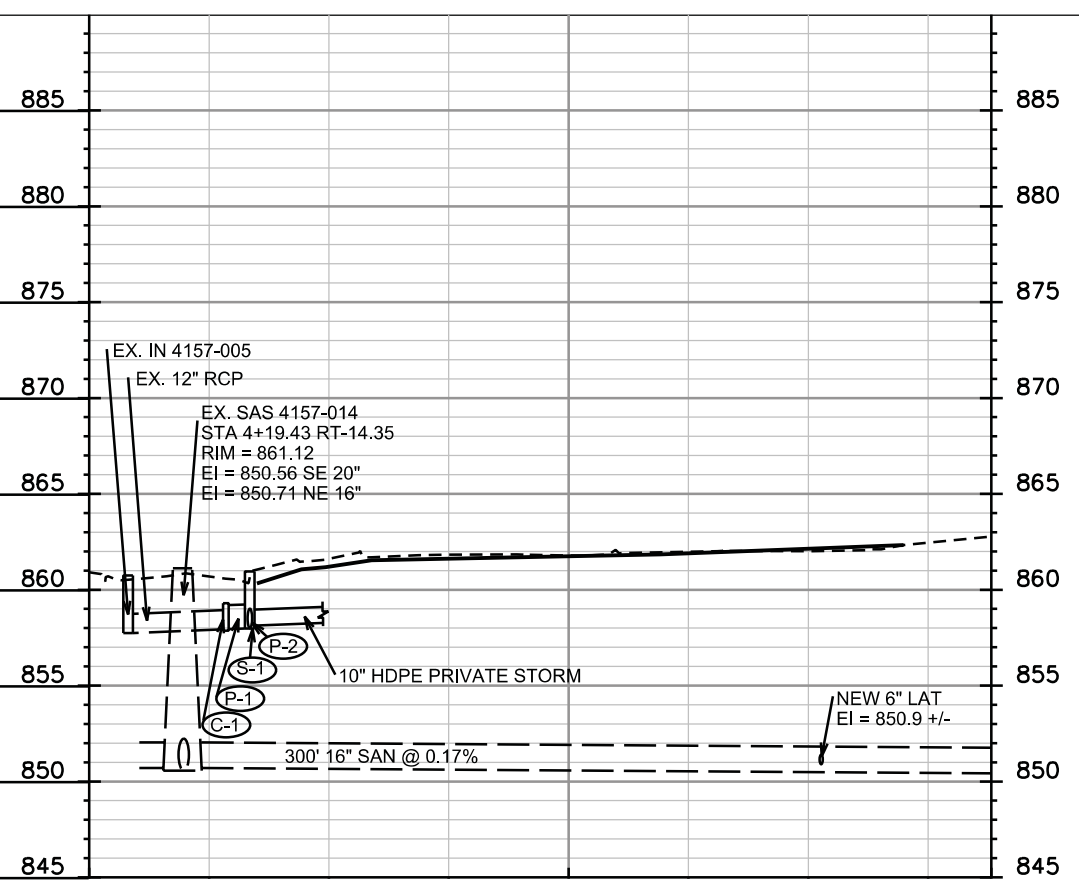
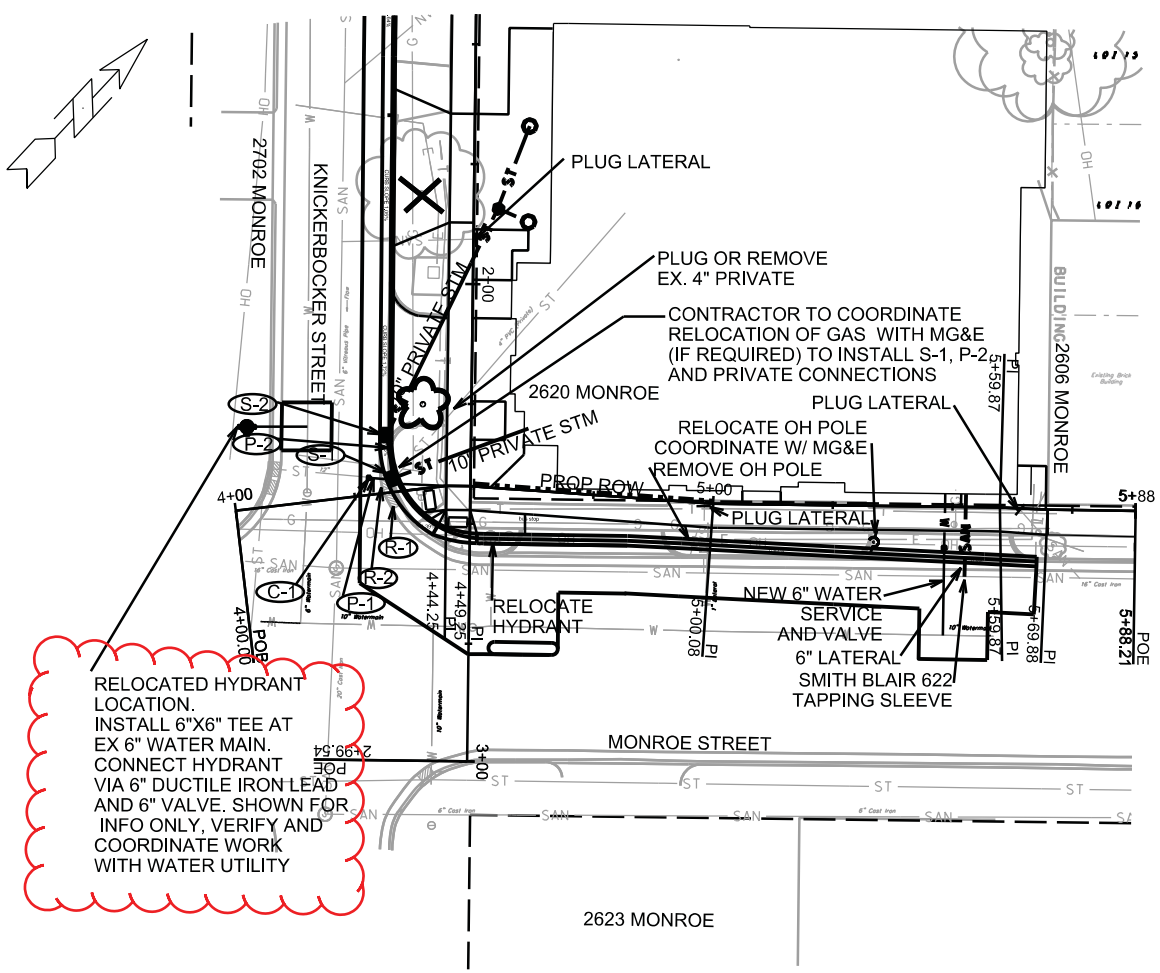
PLOT NAME: _____

REV. DATE: _____

ORIGINATOR: CITY OF MADISON, STREETS DIVISION

NOTES:

1. SAWCUT LIMITS SHOWN ARE APPROXIMATE AND MAY BE ADJUSTED AS NECESSARY IN THE FIELD BY CITY CONSTRUCTION ENGINEER.
2. CONTRACTOR SHALL REPLACE TREES AS SHOWN ON THE PLANS. CONTRACTOR SHALL CONTACT DEAN KAHL WITH CITY FORESTRY (266-4891 OR 266-4816) AT LEAST ONE WEEK PRIOR TO PLANTING TO ALLOW FORESTRY TO MARK THE PLANTING SITES AND REVIEW PLANTING SPECIFICATIONS WITH THE LANDSCAPING CONTRACTOR.
3. CONTRACTOR AND DEVELOPER SHALL BE RESPONSIBLE FOR COORDINATING AND SCHEDULING ANY REQUIRED RELOCATION OF PRIVATE UTILITY FACILITIES WITH PRIVATE UTILITY COMPANIES.
4. TRAFFIC CONTROL: CONTRACTOR SHALL MAINTAIN ONE LANE OF TRAFFIC IN EACH DIRECTION ON MONROE STREET AT ALL TIMES, EXCEPT DURING PEAK HOURS. DURING PEAK HOURS CONTRACTOR SHALL MAINTAIN 2 LANES OF TRAFFIC IN EACH DIRECTION. DEVELOPER/CONTRACTOR SHALL SUBMIT A TRAFFIC CONTROL PLAN FOR REVIEW TO CITY TRAFFIC ENGINEERING AND WORK SHALL NOT BEGIN IN THE RIGHT-OF-WAY UNTIL THE TRAFFIC CONTROL PLAN HAS BEEN APPROVED.



PLOT SCALE:

PLOT NAME:

REV. DATE:

ORIGINATOR: CITY OF MADISON, STREETS DIVISION

STORM SEWER SCHEDULE

ALIGNMENT CODES:

'KS' =KNICKERBOCKER STREET
'MS' =MONROE STREET

2620 MONROE STREET
PROJECT NO 53B2364

SHEET NO.
U-2

STORM SEWER SCHEDULE CITY OF MADISON

STRUCTURES

| STRUC. NO. | STATION | LOCATION (OFFSET) | TYPE | TOP OF CASTING | E.I. | DEPTH | NOTES |
|------------|-------------|-------------------|-----------------|----------------|-----------|-------|----------------------------------|
| C-1 | 2'KS'+40.60 | 21.15 | CONCRETE COLLAR | --- | 857.95+/- | --- | CONNECT TO EX. 12", MATCH INVERT |
| S-1 | 2'KS'+40.61 | RT-16.08 | H INLET | 860.96 | 857.98 | 2.98 | FP, W/ R-3067-7004, (1), (2) |
| S-2 | 2'KS'+31.65 | RT-17.52 | H INLET | 861.03 | 858.03 | 3.00 | W/ R-3067-7004, (1), (3) |

PIPES

| PIPE NO. | FROM (DNSTM) | TO (UPSTM) | LGTH (FT) | DISCH. E.I. | INLET E.I. | SLOPE (%) | PIPE SIZE | TYPE | NOTES |
|----------|--------------|------------|-----------|-------------|------------|-----------|-----------|------|-------|
| P-1 | C-1 | S-1 | 5 | 857.95 | 857.98 | 0.60% | 15" | RCP | |
| P-2 | S-1 | S-2 | 9 | 857.98 | 858.03 | 0.56% | 12" | RCP | NCM |

STORM STRUCTURE REMOVALS

| R | STATION | LOCATION | NOTES |
|-----|-------------|----------|-----------------|
| R-1 | 4'MS'+34.00 | RT-1 | EX. IN 4157-007 |
| R-2 | 4'MS'+33.00 | LT-3.00 | EX IN 4157-006 |

SPECIFIC NOTES:

- (1) STATION AND OFFSET GIVEN IS TO CENTER OF STRUCTURE. SEE S.D.D. 5.7.27
- (2) CONNECT TO PRIVATE 10" HDPE PIPE TO NORTHEAST, EI = 858.13 +/-
- (3) CONNECT TO PRIVATE 10" HDPE PIPE TO NORTHEAST, EI = 858.19 +/-

STANDARD NOTES:

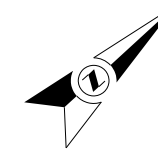
- ABBREVIATIONS: AE = APRON ENDWALL; RCP = REINFORCED CONCRETE PIPE; HERCP = HORIZONTAL ELLIPTICAL REINFORCED CONCRETE PIPE; DNA = DOES NOT APPLY; SAS = SEWER ACCESS STRUCTURE; LP = LOW POINT INLET STRUCTURE; FP = FIELD Poured STRUCTURE; TR = TOP OF CONCRETE ROOF; NCM = NO CROWN MATCH FOR PIPES
- APPROXIMATE DISCHARGE E.I. GIVEN, ADJUST E.I. AND PIPE SLOPE IN THE FIELD.
- TOP OF CASTING GRADE GIVEN IS THE TOP OF CURB FOR INLET STRUCTURES AND THE FLOWLINE OF THE CLOSED CASTING FOR SAS's.
- TOP OF CONCRETE ROOF (TR) IS 1.25' BELOW TOP OF CASTING UNLESS OTHERWISE NOTED.
- ALL REINFORCED CONCRETE PIPES TO BE CLASS III UNLESS OTHERWISE NOTED.
- SURVEYOR TO CONFIRM THAT ALL INLET STATION / OFFSETS LINE UP WITH PROPOSED CURB AND GUTTER.
- ALL STRUCTURES CALLED OUT AS FIELD Poured SHALL BE FIELD Poured. ALL OTHER STRUCTURES (NOT INDICATED AS FIELD Poured) SHALL BE SUBMITTED TO CITY ENGINEERING FOR APPROVAL IF PRECAST STRUCTURES ARE PREFERRED. CONTACT LISA COLEMAN OF CITY ENGINEERING AT (608) 266-4093 FOR PRECAST APPROVALS, OR FAX SHOP DRAWINGS TO (608)264-9275.

ELECTRICAL PLAN

MONROE ST.

CITY OF MADISON

8/19/14 KF



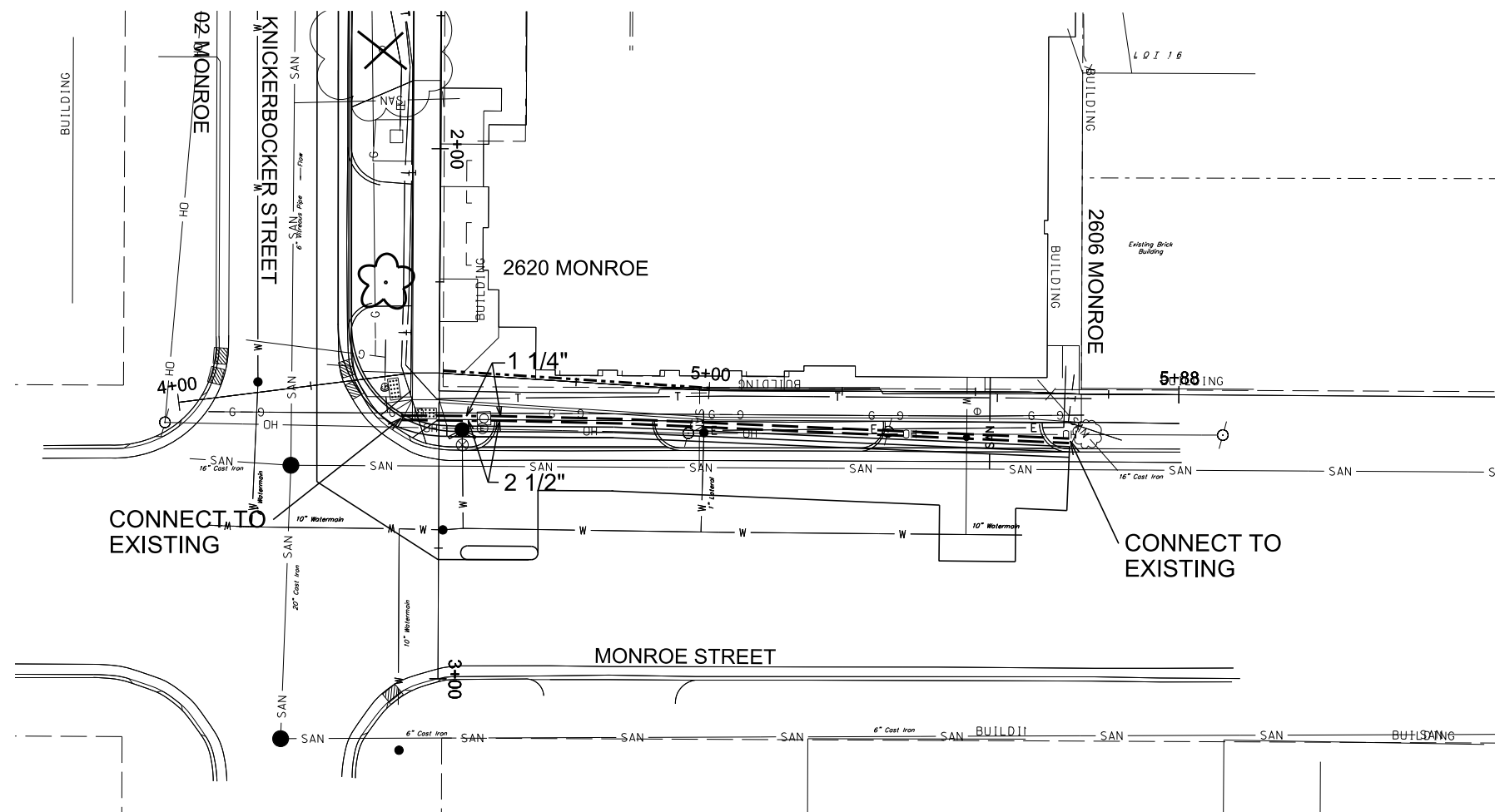
GENERAL ELECTRIC NOTES:

1. ALL LOCATIONS ARE APPROXIMATE. THE TRAFFIC ENGINEER SHALL APPROVE FINAL LOCATIONS, INCLUDING SETBACK, IN THE FIELD AFTER CONTRACTOR SURVEYS STAKING. THE CONTRACTOR SHALL NOTIFY DAN DETTMANN (266-6536) OR CITY TRAFFIC ENGINEERING, AT LEAST 24-HOURS IN ADVANCE OF NEEDING CONDUIT OR BASE LOCATIONS MARKED.
2. THE CONTRACTOR SHALL DO ALL WORK IN ACCORDANCE WITH "CITY OF MADISON STANDARD SPECIFICATIONS FOR PUBLIC WORKS CONSTRUCTION, 2014 EDITION" AND ALL ADDENDUMS THERETO. ALL CONDUIT SHALL BE PVC, SCHEDULE 80 UNDER PAVEMENT OR SCHEDULE 40 OTHERWISE. PULL WIRE REQUIRED AS PER STANDARD SPECIFICATIONS.
3. THE CONTRACTOR SHALL CALL MIKE CHRISTOPH (266-9031) AT THE TRAFFIC ENGINEERING SHOP AT LEAST 24-HOURS IN ADVANCE OF POURING BASES OR BURYING CONDUIT TO ARRANGE FOR INSPECTION. ANY WORK COMPLETED WITHOUT INSPECTION IS SUBJECT TO REJECTION.
4. THE CONTRACTOR SHALL ARRANGE FOR PICK UP OF THE FOLLOWING CITY FURNISHED MATERIALS, WHICH SHOULD BE ARRANGED FOR PICKUP BY CALLING DENNIS ROWE, TRAFFIC ENGINEERING SHOP, 266-9034 1120 SAYLE ST, AT LEAST 24-HOURS PRIOR TO NEEDING MATERIALS:

-TYPE I HANDHOLES - 1

LEGEND

- ☐ INSTALL HANDHOLE
- · — · — · INSTALL PVC (SIZE NOTED)

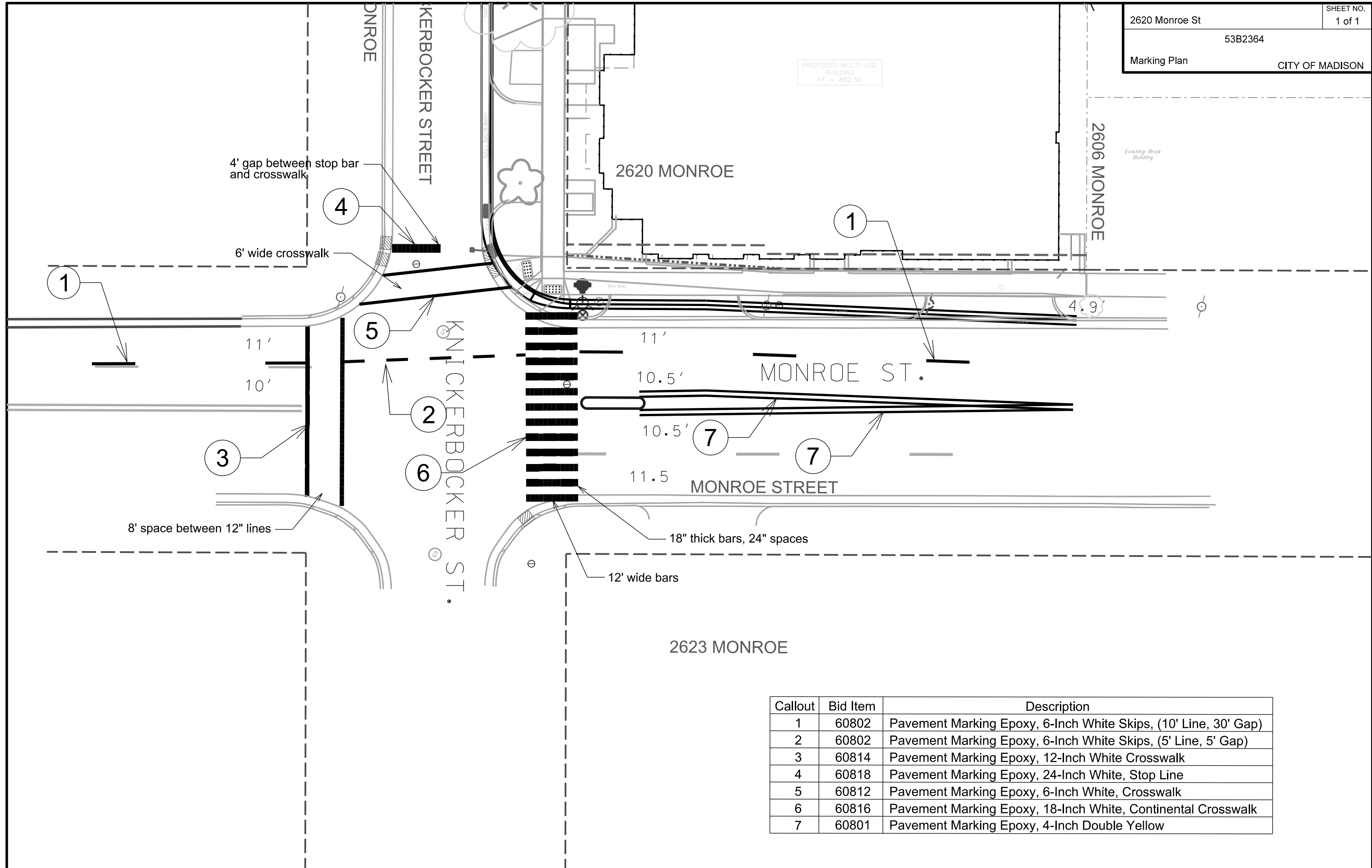


PLOT SCALE:

PLOT NAME:

REV. DATE:

ORIGINATOR: CITY OF MADISON, TRAFFIC ENG. DIV.



| Callout | Bid Item | Description |
|---------|----------|---|
| 1 | 60802 | Pavement Marking Epoxy, 6-Inch White Skips, (10' Line, 30' Gap) |
| 2 | 60802 | Pavement Marking Epoxy, 6-Inch White Skips, (5' Line, 5' Gap) |
| 3 | 60814 | Pavement Marking Epoxy, 12-Inch White Crosswalk |
| 4 | 60818 | Pavement Marking Epoxy, 24-Inch White, Stop Line |
| 5 | 60812 | Pavement Marking Epoxy, 6-Inch White, Crosswalk |
| 6 | 60816 | Pavement Marking Epoxy, 18-Inch White, Continental Crosswalk |
| 7 | 60801 | Pavement Marking Epoxy, 4-Inch Double Yellow |

PLOT SCALE:
 PLOT NAME:
 REV. DATE:
 ORIGINATOR: CITY OF MADISON, TRAFFIC ENG. DIV.